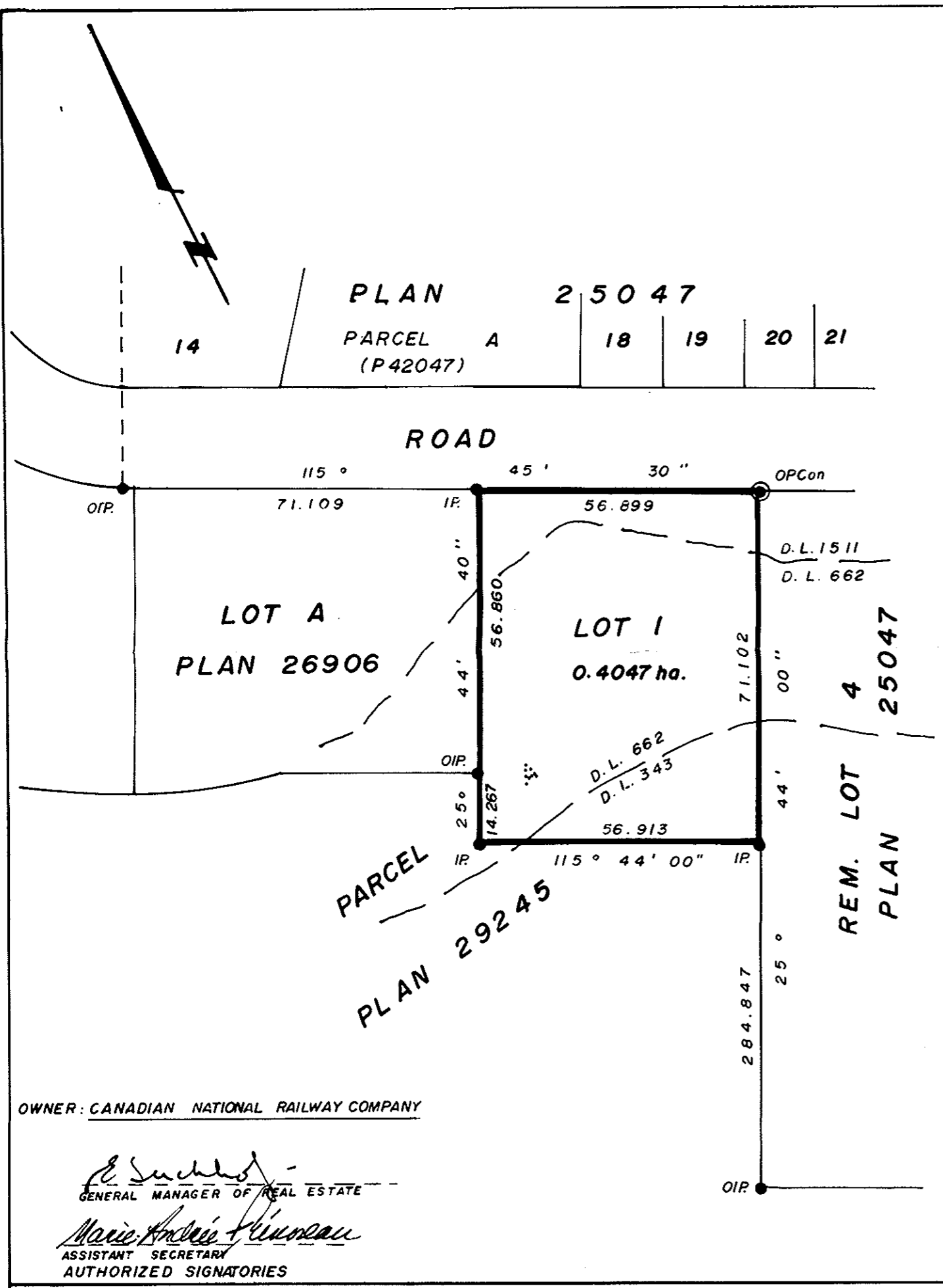


JM

PLAN NO. 30916  
Deposited in the Land Title Office at Prince George  
this 19th day of July 1983

W.G.  
Registrar



PLAN OF SUBDIVISION OF  
PART OF PARCEL A, PLAN 29245,  
DISTRICT LOTS 662, 1511, and 343,  
CARIBOO DISTRICT.  
SCALE: 1:1000 (DISTANCES ARE IN METRES)



Bearings are astronomic derived from  
Plan 25047.

- IP.....Standard Iron Post.
- PCOn.....Standard Post In Concrete.
- O.....Denotes old.

I, D. Keown, a British Columbia Land Surveyor of  
Prince George in British Columbia certify that I was  
present at and personally superintended the survey  
represented by this plan and that the survey and  
plan are correct. The survey was completed on the  
17th day of June 1983.

*D. Keown*  
D. Keown, B.C.L.S.

Approved under the Land Title Act  
this 25th day of Oct 1983.

*C. E. Duff*  
Approving Officer  
City of Prince George

Reapproved JUNE 14 1985  
*C E Duff*

This plan lies within the Fraser Fort George  
Regional District

OWNER: CANADIAN NATIONAL RAILWAY COMPANY

*E. S. ...*  
GENERAL MANAGER OF REAL ESTATE  
*Marie-Anne ...*  
ASSISTANT SECRETARY  
AUTHORIZED SIGNATORIES

McWilliam, Whyte, Goble, & Associates,  
B.C. Land Surveyors,  
Prince George - Kamloops - Smithers - Salmon Arm.

REF. NO. 82154 (D.L. 662)

H 11.6 55