

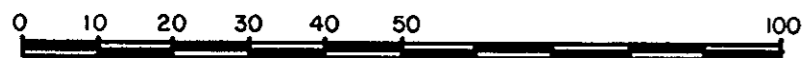
30819

PLAN No _____

Deposited in the Land Title
Office, at Prince George, B.C. this
7th day of June, 1984._____
W.G.
Registrar

REFERENCE PLAN TO ACCOMPANY
BYLAW NO. 4292 OF THE CITY OF PRINCE GEORGE
CLOSING PART OF LELAND ROAD ADJACENT TO
LOT 1, PLAN 16586, DISTRICT LOTS 1571 & 1592 AND
LOT 1, BLOCK 15, PLAN 1385, DISTRICT LOT 1593
CARIBOO DISTRICT - BRITISH COLUMBIA

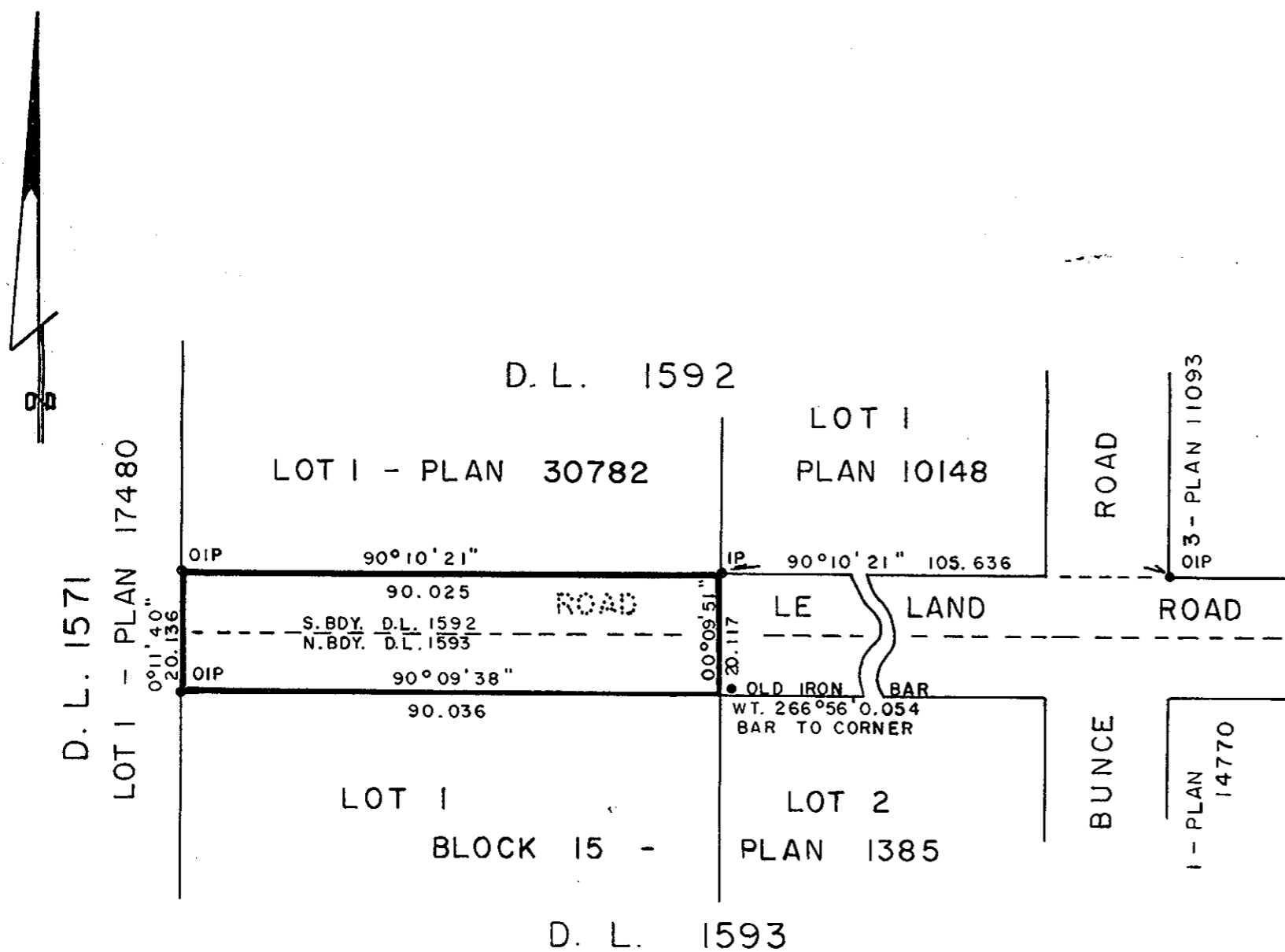
SCALE: 1: 1000



FD

NOTE: Bearings are astronomic, derived from the
east boundary of D.L. 1571, as shown on Plan 30782.

LEGEND: • OIP denotes an old iron pin found.
• IP denotes an iron pin placed on this survey
WT. denotes witness



Approved under the Land Title Act
this 17th day of January, 1984

I, DONALD A. DUFFY, a British Columbia Land
Surveyor, of Prince George, in British Columbia,
certify that I was present at and did personally
superintend the survey represented by this plan,
and that the survey and plan are correct. The
survey was completed on the 10 day of JAN,
1984.

C.E. O'hat
Approving Officer, City of Prince George

RE-APPROVED APRIL 30 1984

Re-approved April 2nd 1985 *C.E. O'hat*

C.E. O'hat

This plan lies within the Fraser-Fort George
Regional District.

RE-APPROVED JULY 26, 1984

C.E. O'hat

W. D. USHER & ASSOCIATES
LAND SURVEYORS
PRINCE GEORGE - B.C.
14202 PG 44-45

PG 9/8/84