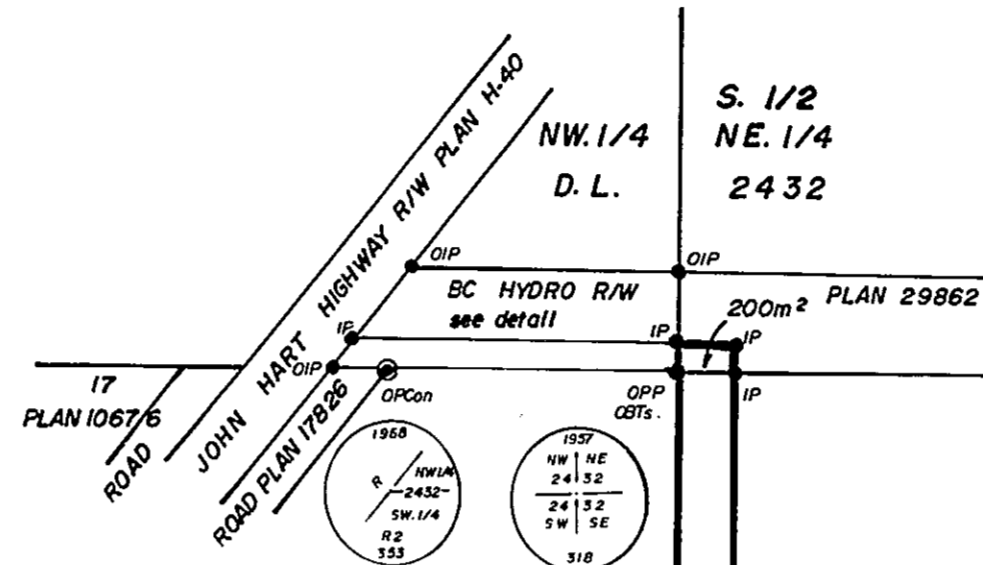


26-226-FF

PLAN NO. 30791

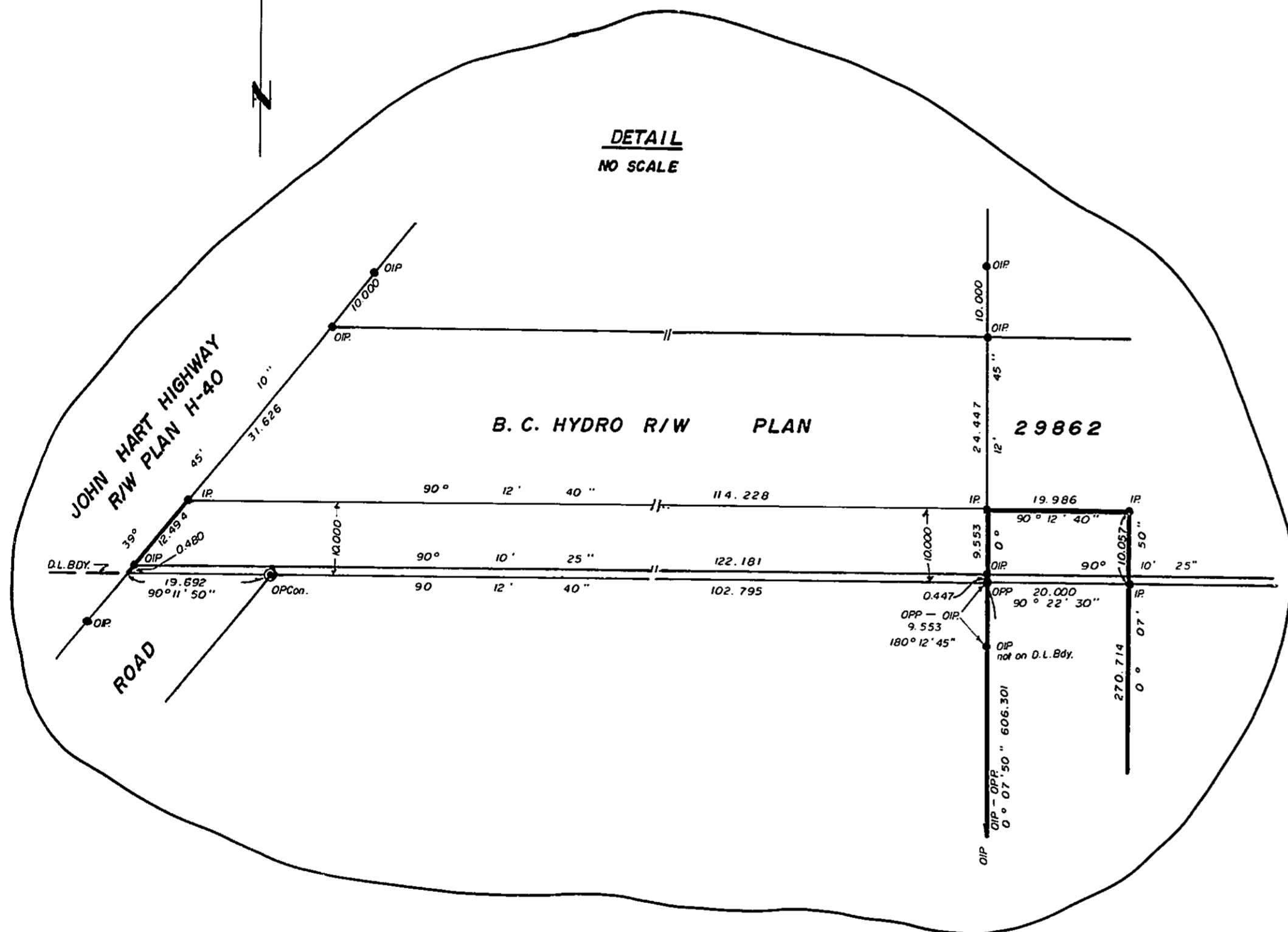
DEPOSITED IN THE LAND TITLE OFFICE AT PRINCE GEORGE
THIS 11th DAY OF May 1985.

W. B. Bandy
REGISTRAR

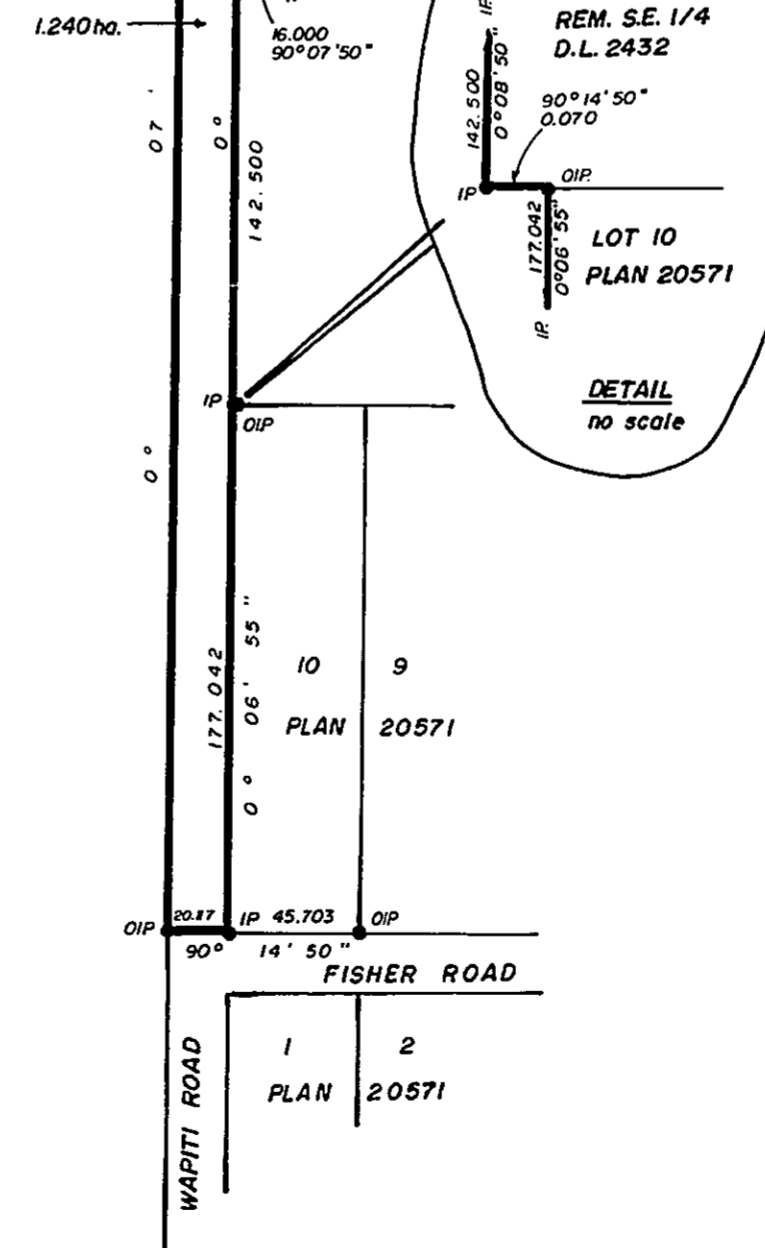


PLAN OF STATUTORY RIGHT-OF-WAY
WITHIN THE SOUTH 1/2 of NE 1/4 and S.E. 1/4
OF DISTRICT LOT 2432, CARIBOO DISTRICT.

SCALE: 1: 2000 (DISTANCES ARE IN METRES)



S. W. 1/4 D. L. 2432



BEARINGS ARE ASTRONOMIC DERIVED FROM
WEST Bdy. OF S.E. 1/4 OF D.L. 2432 SHOWN AS
0° 07' 50" ON PLAN 20571.

- IP STANDARD IRON POST
- PP STANDARD PIPE POST
- ⊙ PCOn STANDARD POST IN CONCRETE.
- O DENOTES "OLD"
- BT BEARING TREES.

I DALE KEOWN A BRITISH COLUMBIA LAND SURVEYOR
OF PRINCE GEORGE IN BRITISH COLUMBIA CERTIFY THAT
I WAS PRESENT AT AND PERSONALLY SUPERINTENDED
THE SURVEY REPRESENTED BY THIS PLAN AND THAT
THE SURVEY AND PLAN ARE CORRECT. THE SURVEY
WAS COMPLETED ON THE 25th DAY OF APRIL, 1985.

Dale Keown
DALE KEOWN, B.C.L.S.

BOOK OF REFERENCE	
DESCRIPTION	AREA
REM. SE 1/4 DL 2432	1.240 ha.
S. 1/2 NE 1/4 D.L. 2432	2.00 m ²

THIS PLAN LIES WITHIN THE FRASER FORT GEORGE
REGIONAL DISTRICT.