

PLOTTED

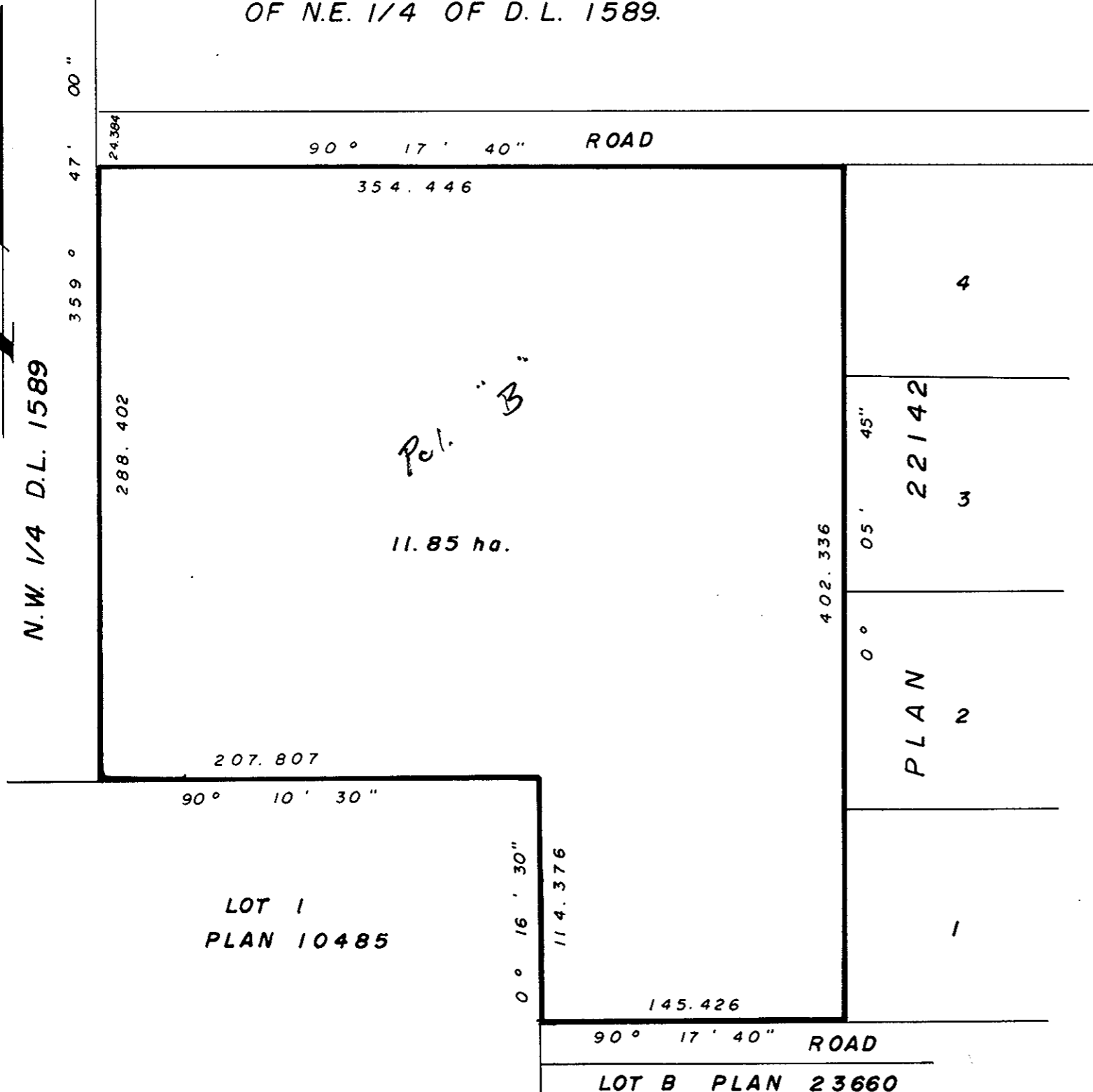
EC + DC

PLAN NO. 30785

Deposited in the Land Title Office at Prince George
this 13 day of MAY 1985

W.D.
Registrar

REM.
PARCEL A (103143 M)
OF N.E. 1/4 OF D.L. 1589.



EXPLANATORY PLAN OF SUBDIVISION
OF PART OF PARCEL A (103143 M) OF
THE N.E. 1/4 OF D.L. 1589,
EXCEPT PLAN 22142,
CARIBOO DISTRICT.

SCALE: 1:2500



ALL DISTANCES ARE IN METRES.

"THE REGISTERED OWNERS DESIGNATED HEREON HEREBY DECLARE
THAT THEY HAVE ENTERED INTO A CONDITION OR COVENANT
TO BE REGISTERED AS A FIRST CHARGE WITH THE CITY OF PRINCE GEORGE
UNDER SECTION 215 OF THE LAND TITLE ACT."

Approved under the Land Title Act this 14th day of DECEMBER 1984. Reapproved May 2, 1985

C. E. [Signature]
Approving Officer
City of Prince George

CERTIFIED CORRECT
according to Land Title Office Records
this 13th day of December, 1984.

V. Bartell
V. Bartell, B.C.L.S.
J.C. Reynolds
Agnes M. Reynolds

Witness: *Barbara L. Louch*
Ad #3 West Lake
Prince George B.C.
Occ: *Lashier* V2N 257

This plan lies within the Fraser Fort
George Regional District.

McWilliam, Whyte, Gable & Associates,
B.C. Land Surveyors,
Prince George - Kamloops - Smithers - Salmon Arm.

REF. NO. 81162 (D.L. 1589)