

26-226-FF

PLAN NO. 30763

DEPOSITED IN THE LAND TITLE OFFICE AT
PRINCE GEORGE THIS 2nd DAY OF May 1985.

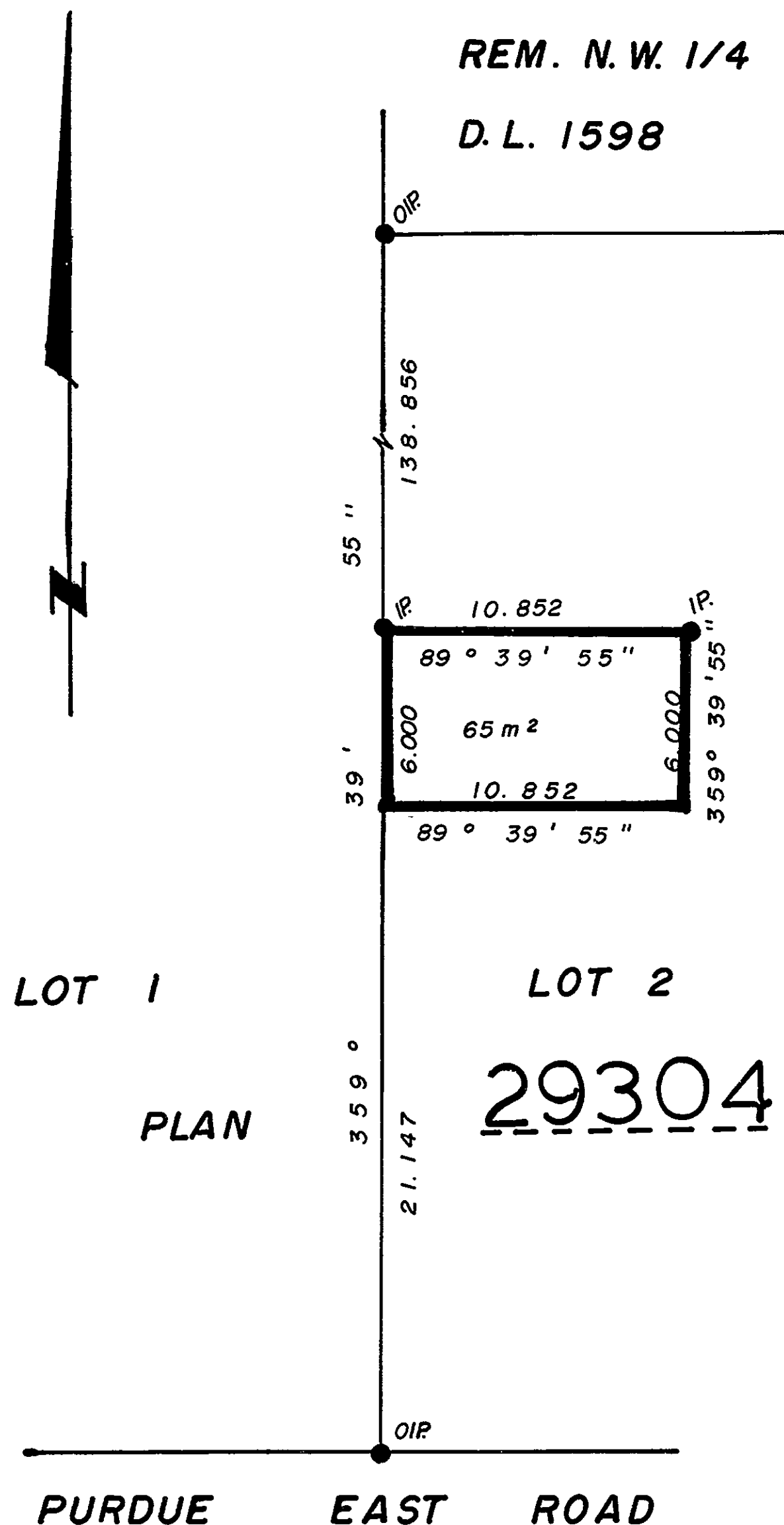
W. B. Gandy per Sm
REGISTRAR

REM. N.W. 1/4

D. L. 1598

REFERENCE PLAN OF EASEMENT
IN LOT 2, PLAN 29304,
N.W. 1/4 DISTRICT LOT 1598,
CARIBOO DISTRICT.

SCALE: 1:250 (DISTANCES ARE IN METRES)



BEARINGS ARE ASTRONOMIC DERIVED FROM
PLAN 29304.

● IP.....STANDARD IRON POST.
○..... DENOTES "OLD"

I, D. KEOWN, A BRITISH COLUMBIA LAND SURVEYOR OF
PRINCE GEORGE IN BRITISH COLUMBIA CERTIFY THAT I WAS
PRESENT AT AND PERSONALLY SUPERINTENDED THE SURVEY
REPRESENTED BY THIS PLAN AND THAT THE SURVEY AND
PLAN ARE CORRECT. THE SAID SURVEY WAS COMPLETED
ON THE 20 DAY OF JULY, 1982.

Dale Keown
D. KEOWN, B.C. L.S.

BOOK OF REFERENCE	
DESCRIPTION	AREA
LOT 2 PLAN <u>29304</u>	65m ²

THIS PLAN LIES WITHIN THE FRASER FORT GEORGE
REGIONAL DISTRICT.

Mc WILLIAM, WHYTE, GOBLE, & ASSOCIATES,
B.C. LAND SURVEYORS,
PRINCE GEORGE - KAMLOOPS - SMITHERS - SALMON ARM
REF. NO. 81183 A D.L. 1598