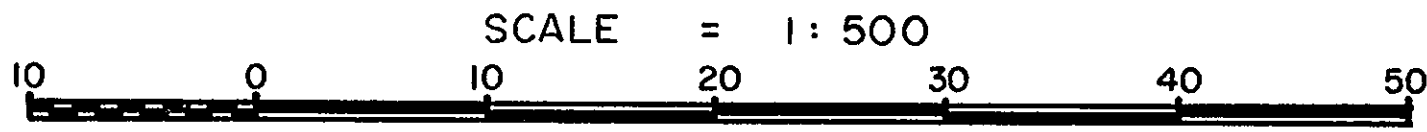


# 26-226-FF

REFERENCE PLAN OF STATUTORY RIGHT-OF-WAY  
 FOR MUNICIPAL PURPOSES THROUGH  
 CLOSED LANE, (PLAN 30755),  
 BLOCK 56, PLAN 696  
**DISTRICT LOT 936**  
 CARIBOO DISTRICT-BRITISH COLUMBIA

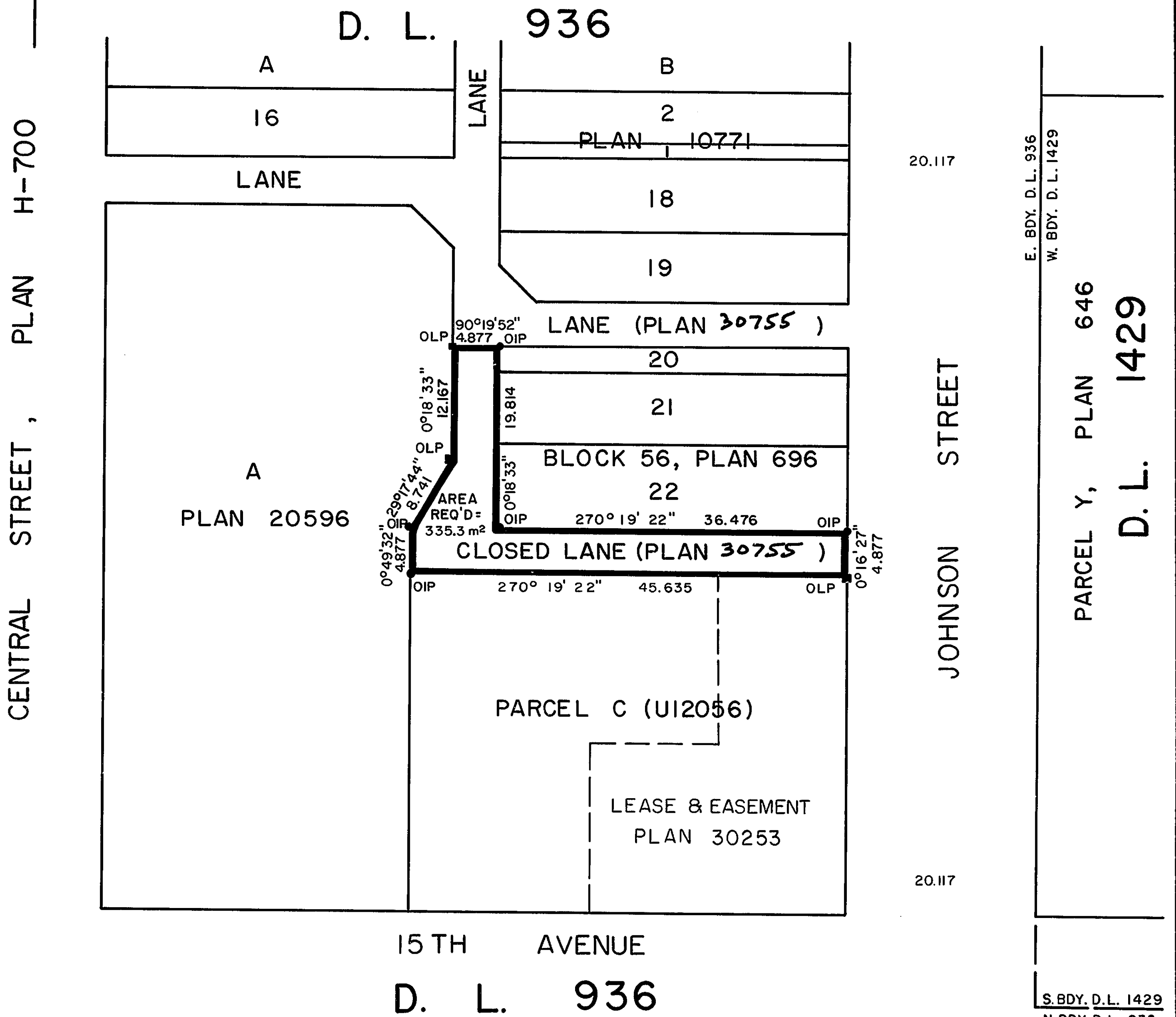
PLAN No **30756**  
 Deposited in the Land Title  
 Office at Prince George, B.C. this  
 1<sup>st</sup> day of MAY, 1985.



W. B. Gandy - Registrar

NOTE: Bearings are astronomic, derived from the south boundary of Closed Road, PLAN 30755.

LEGEND: ● OIP denotes an old iron pin found.  
 ■ OLP denotes an old lead plug found.



I, DONALD A. DUFFY, a British Columbia Land Surveyor, of Prince George, in British Columbia, certify that I was present at and did personally superintend the survey represented by this plan, and that the survey and plan are correct. The survey was completed on the 9<sup>th</sup> day of November, 1984.

This plan lies within the Fraser- Fort George Regional District.

W. D. USHER & ASSOCIATES  
 LAND SURVEYORS  
 PRINCE GEORGE — B.C.  
 PL36 PN57 14334C