

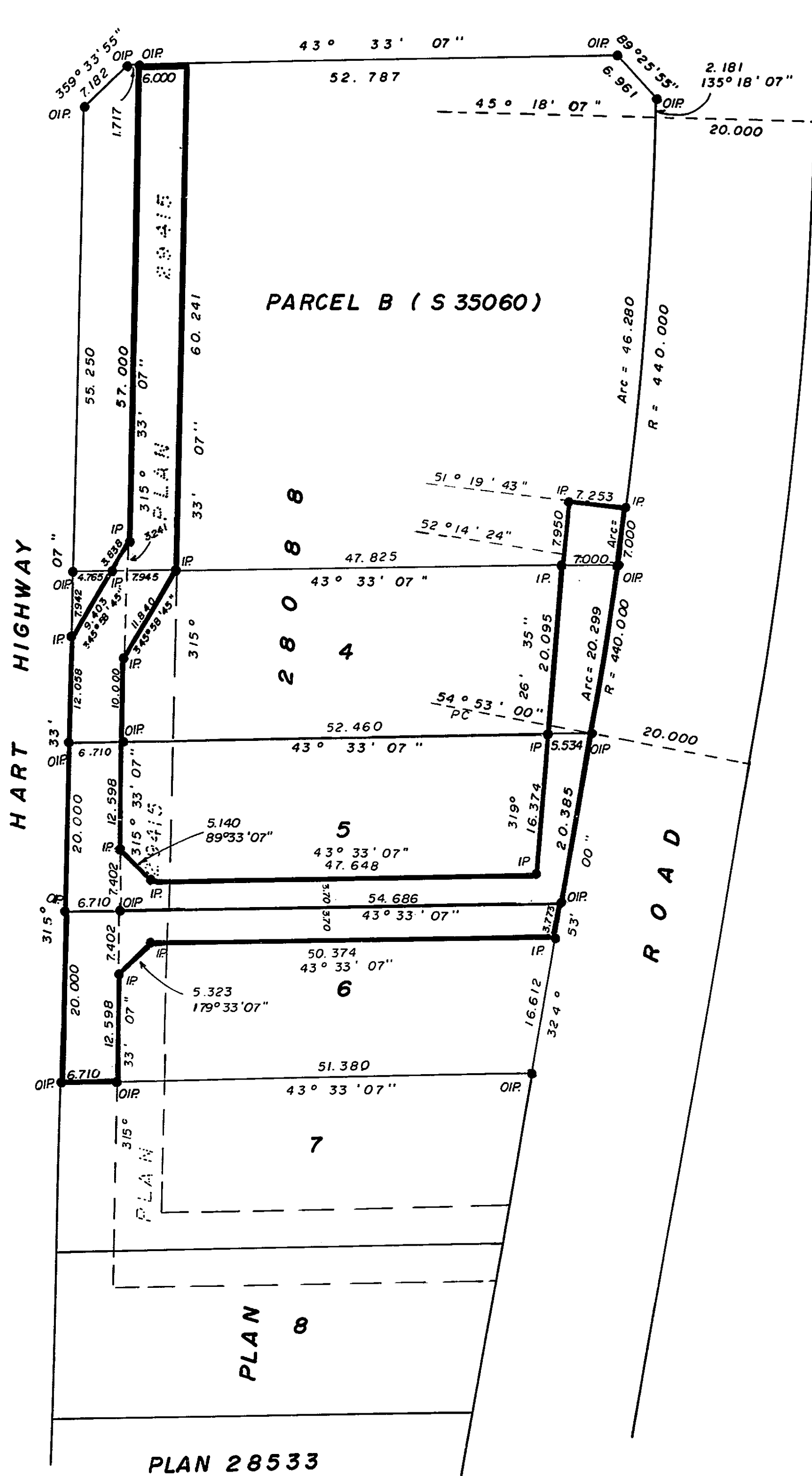
26-226-FF

MONTEREY ROAD

PLAN NO. 30744

DEPOSITED IN THE LAND TITLE OFFICE AT PRINCE GEORGE THIS 19th DAY OF April 1985.

W.B. Gandy REGISTRAR



REFERENCE PLAN OF EASEMENT IN PARCEL B (S 35060) and LOTS 4, 5 and 6, PLAN 28088, D.L.4039, CARIBOO DISTRICT.

SCALE: 1:500 (ALL DISTANCES ARE IN METRES)



LEGEND

BEARINGS ARE ASTRONOMIC DERIVED FROM PLAN 28088.

- IP.....STANDARD IRON POST.
- DENOTES "OLD"

I, V. BARTELL, A BRITISH COLUMBIA LAND SURVEYOR OF PRINCE GEORGE IN BRITISH COLUMBIA CERTIFY THAT I WAS PRESENT AT AND PERSONALLY SUPERINTENDED THE SURVEY REPRESENTED BY THIS PLAN AND THAT THE SURVEY AND PLAN ARE CORRECT. THE SURVEY WAS COMPLETED ON THE 22nd DAY OF March 1985.

V. Bartell
V. BARTELL, B.C.L.S.

BOOK OF REFERENCE	
DESCRIPTION	AREA
PARCEL B (S 35060)	417 m ²
LOT 4 PLAN 28088	272 m ²
LOT 5 PLAN 28088	422 m ²
LOT 6 PLAN 28088	342 m ²

THIS PLAN LIES WITHIN THE FRASER FORT GEORGE REGIONAL DISTRICT.

McWILLIAM, WHYTE, GOBLE & ASSOCIATES,
B.C. LAND SURVEYORS,
PRINCE GEORGE - KAMLOOPS - SMITHERS - SALMON ARM
REF. NO. 85010