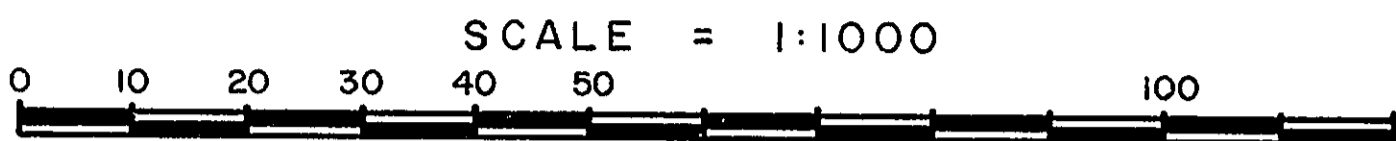


EXPLANATORY PLAN OF EASEMENT THROUGH  
 LOT 1, PLAN 10365 AND  
 PARCEL A (102363M), EXCEPT PLAN 23178  
 DISTRICT LOT 2061  
 CARIBOO DISTRICT

PLAN No 30719

Deposited in the Land Title Office  
 at Prince George, B.C. this 27  
 day of March, 1985.



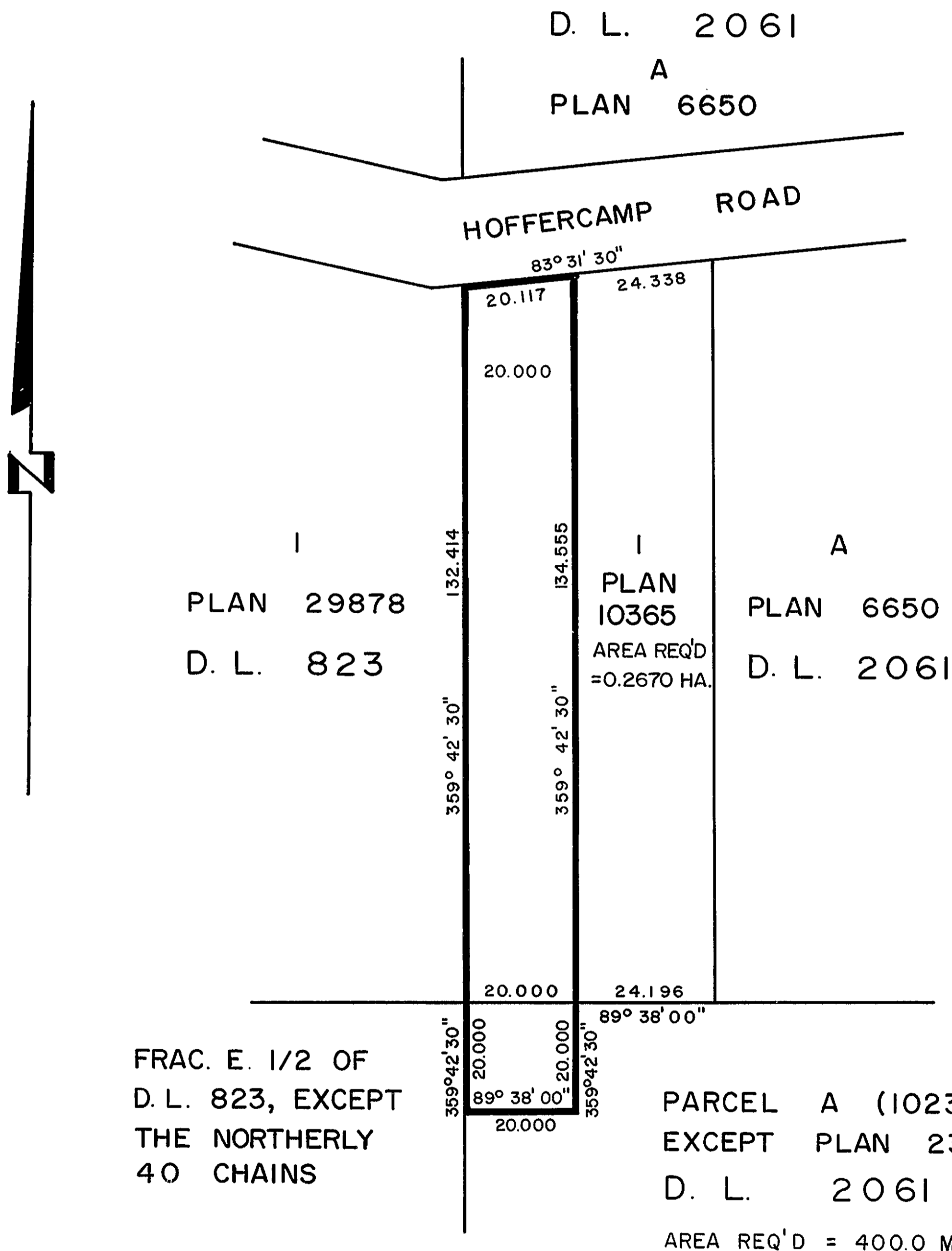
W. G. Gandy per Sm.  
 Registrar

NOTE: Bearings are astronomic, derived from Plan 10365.

*26-FF*

BOOK OF REFERENCE

Description	Area Required
Lot 1, Plan 10365, D.L. 2061	0.2670 Ha.
Parcel A (102363M), Except Plan 23178, D.L. 2061.	400.0 M <sup>2</sup>



CERTIFIED CORRECT  
 According to measurements shown  
 on Plan 10365 this 26th day of  
 March, 1985.

*Gordon Kilbride*  
 Gordon Kilbride, B.C.L.S.

This plan lies within the Fraser-  
 Fort George Regional District.

W. D. USHER & ASSOCIATES  
 LAND SURVEYORS  
 PRINCE GEORGE — B. C.  
 14490