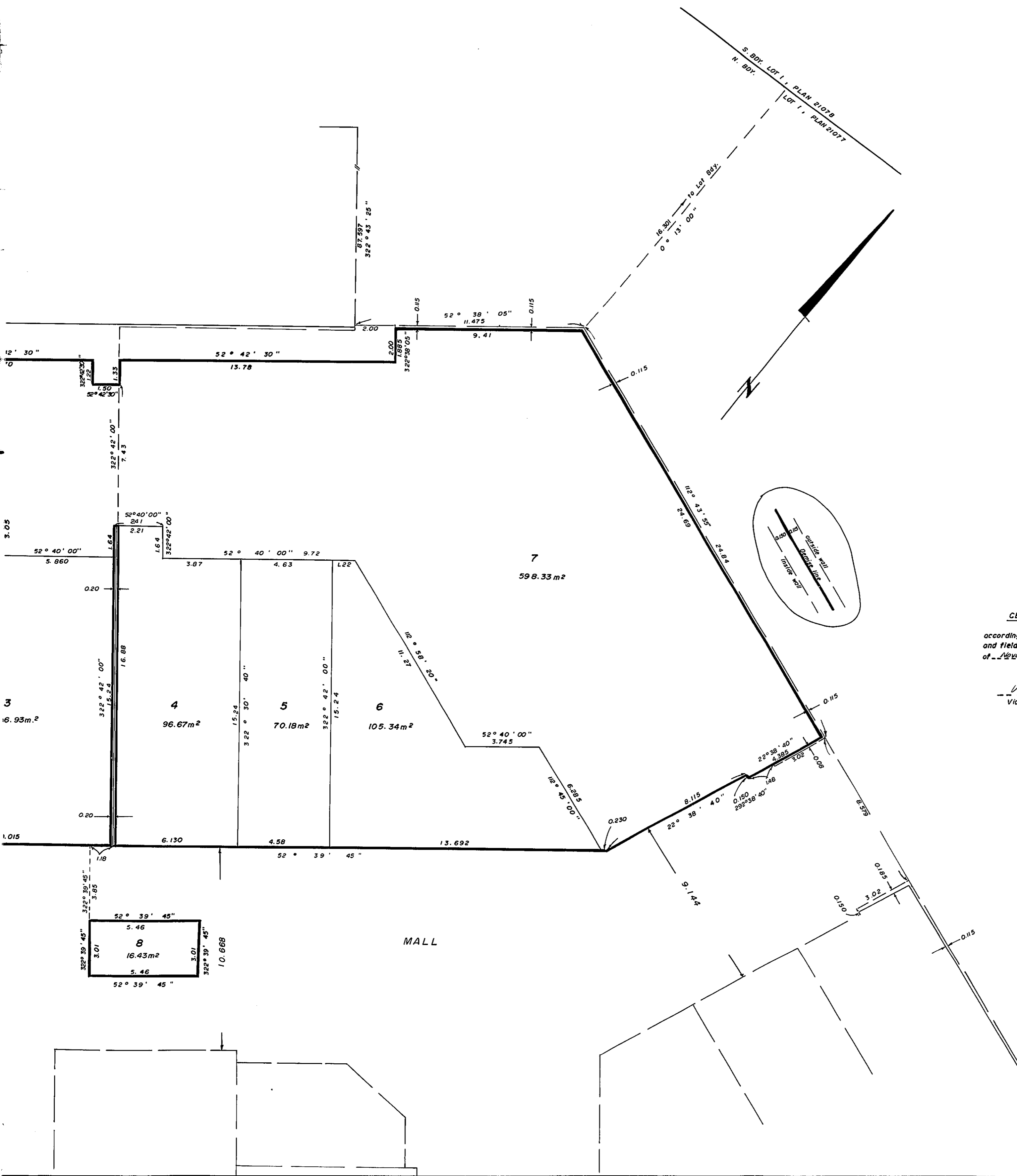


ANATOMY PLAN OF LEASEHOLDS
BUILDING SITUATE ON LOT 1, PLAN 21077,
RICT LOTS 8173 and 8180, CARIBOO DISTRICT.

PLAN NO. 30675
Deposited in the Land Title Office at Prince George
this 2nd day of ~~March~~ 1985.

Victor Bartell
Registrar

Scale: 1:100 (DISTANCES ARE IN METRES)



CERTIFIED CORRECT

according to Land Title Office Records
and field measurements this 22nd day
of ~~November~~ 1984.

Victor Bartell
Victor Bartell, B.C.L.S.

This plan lies within the Fraser Fort George Regional District.

McWILLIAM, WHYTE, GOBLE, & ASSOCIATES,
B.C. LAND SURVEYORS,
PRINCE GEORGE - KAMLOOPS - SMITHERS - SALMON ARM.

REF. NO. 84077

26-FF

EXPLANATORY PLAN OF LEASEHOLDS
ON BUILDING SITUATE ON LOT 1, PLAN 21077,
DISTRICT LOTS 8173 and 8180, CARIBOO DISTRICT.

Scale : 1:100 (DISTANCES ARE IN METRES)

