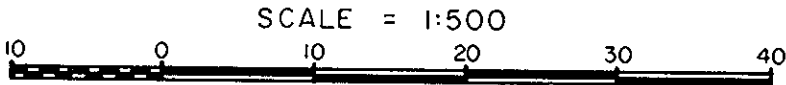


REFERENCE PLAN OF CONSOLIDATION OF
 LOTS 25 TO 30 INCLUSIVE
 BLOCK 20, PLAN 902
 DISTRICT LOT 629
 CARIBOO DISTRICT - BRITISH COLUMBIA

PLAN No 30387
 Deposited in the Land Title
 Office at Prince George, B.C. this
 day of Nov., 1984.

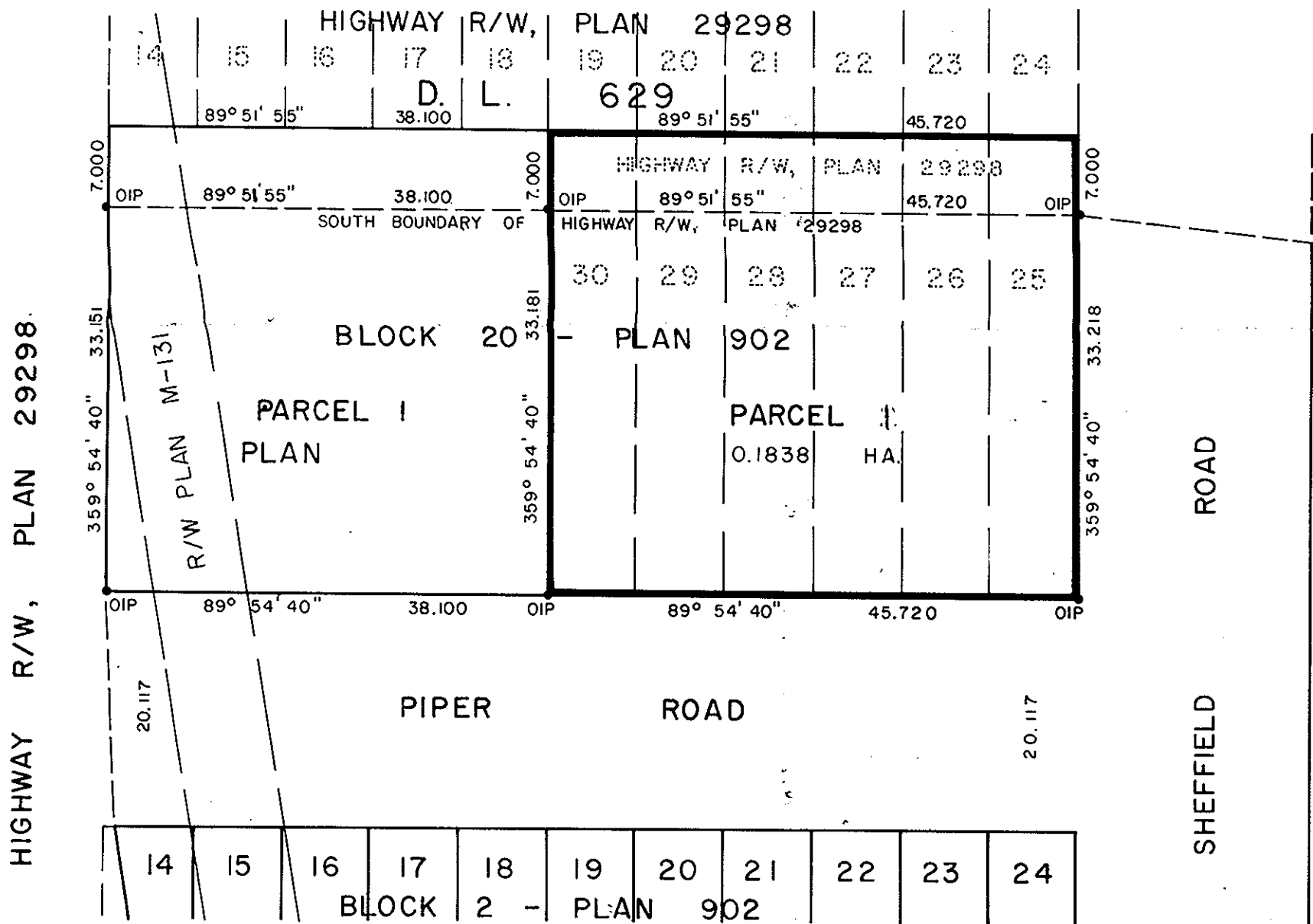


W. G. O.
 Registrar

NOTE: Bearings are astronomic, derived from the
 south boundary of Highway R/W, Plan 29298.

LEGEND: ●OIP denotes an old iron pin found.

PLOTTED MK



I, DONALD A. DUFFY, a British Columbia Land
 Surveyor, of Prince George, in British Columbia,
 certify that I was present at and did personally
 superintend the survey represented by this plan,
 and that the survey and plan are correct. The
 survey was completed on the 17th day of October,
 1984.

[Signature]

HILL TOP DEVELOPMENTS LTD.

[Signature]
 Authorized signatory

Authorized signatory

This plan lies within the Fraser-Fort George
 Regional District

W. D. USHER & ASSOCIATES
 LAND SURVEYORS
 PRINCE GEORGE — B.C.
 PF 77 14532A