

26-FF-226

REFERENCE PLAN OF
EASEMENT THROUGH
LOT 2, PLAN 23227
DISTRICT LOT 4032, CARIBOO DISTRICT
SCALE: 1:1000



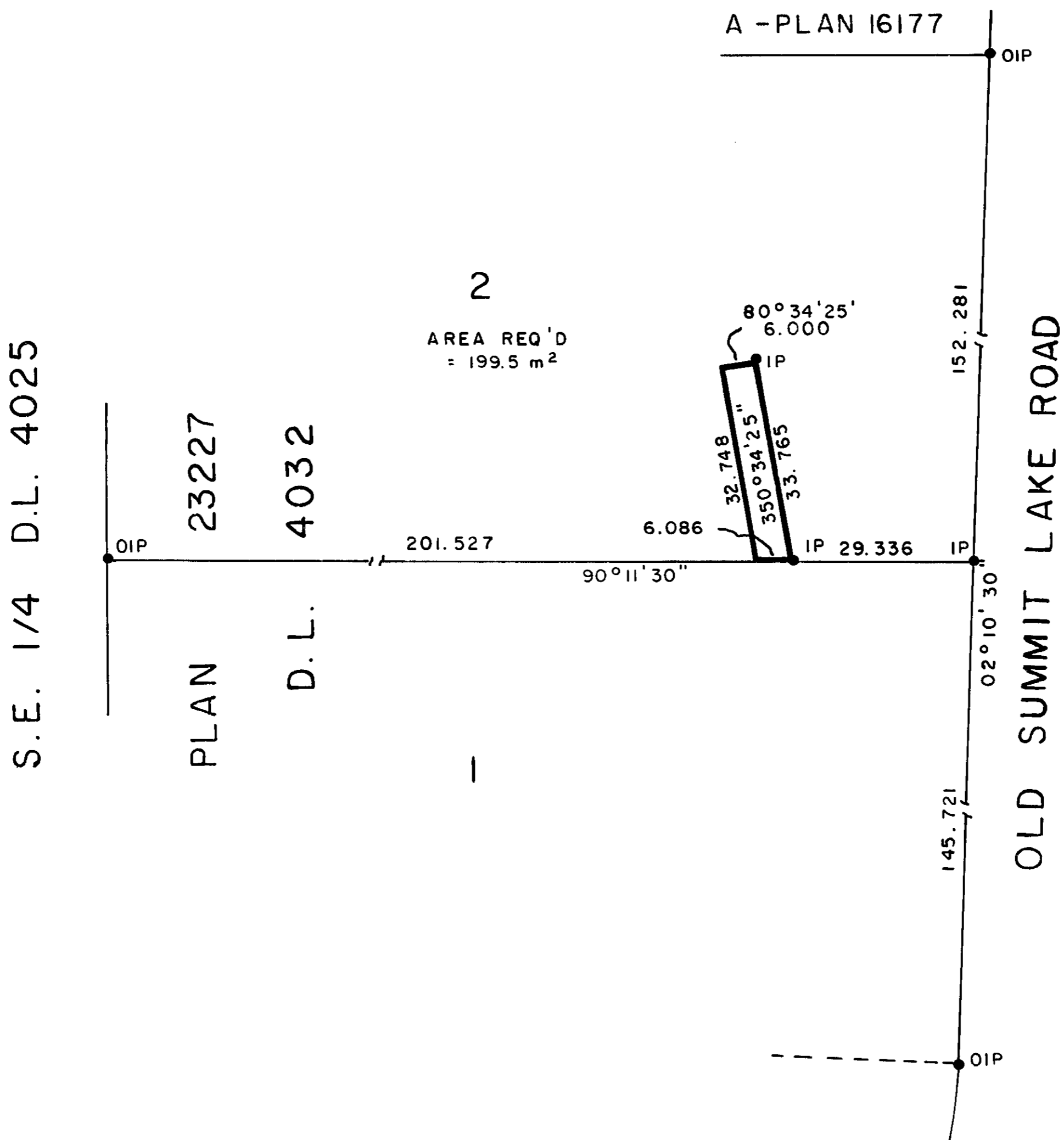
PLAN No **30379**

Deposited in the Land Title
Office at Prince George, B.C. this
26 day of October, 1984.

NOTE: Bearings are astronomic, derived from
the east boundaries of Lots 1 & 2, Plan 23227.

W. G. Hardy
Registrar

LEGEND: ● OIP denotes an old iron pin found.
● IP denotes an iron pin set.



I, DONALD A. DUFFY, a British Columbia Land Surveyor, of Prince George, in British Columbia, certify that I was present at and did personally superintend the survey represented by this plan, and that the survey and plan are correct. The survey was completed on the 24th day of Sept. 1984.

This plan lies within the Fraser- Fort George Regional District.

W. D. USHER & ASSOCIATES
LAND SURVEYORS
PRINCE GEORGE — B.C.
14293 PU6