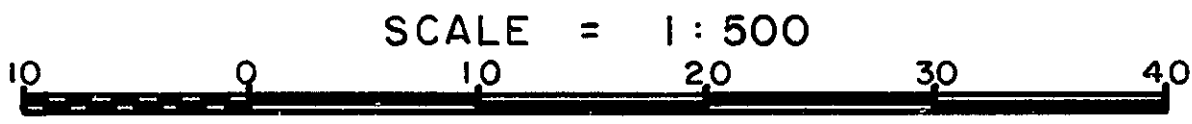


# 26-FF-226

REFERENCE PLAN OF EASEMENT THROUGH  
LOT 6, PLAN 16198  
DISTRICT LOT 2422  
CARIBOO DISTRICT - BRITISH COLUMBIA

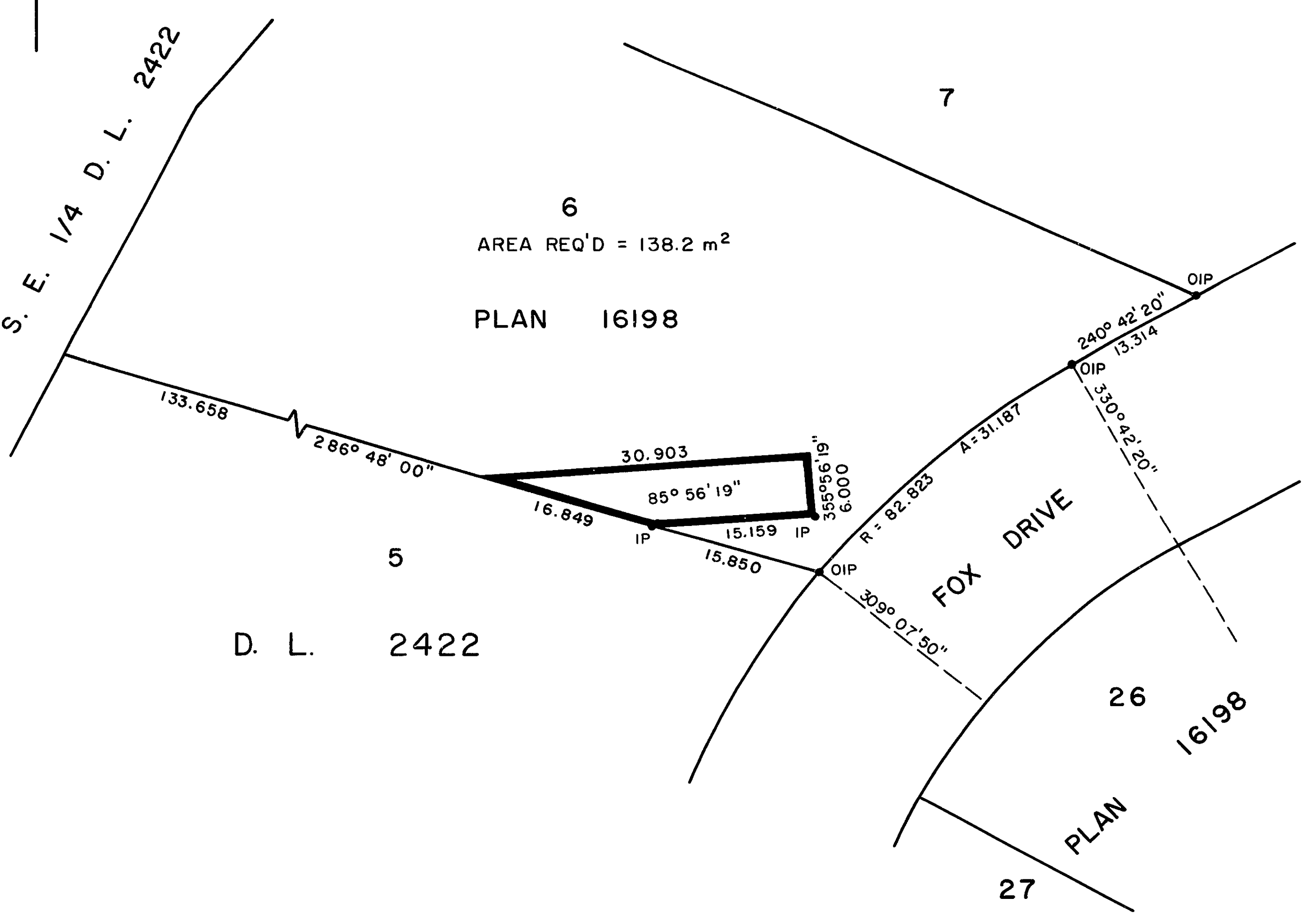
PLAN No **30376**  
Deposited in the Land Title  
Office at Prince George, B.C. this  
26. day of October, 1984



NOTE: Bearings are astronomic, derived from the southeasterly boundary of Lot 6, Plan 16198.

W.G. GANDY  
Registrar  
no: ES

LEGEND: ●OIP denotes an old iron pin found.  
●IP denotes an iron pin set.



I, DONALD A. DUFFY, a British Columbia Land Surveyor, of Prince George, in British Columbia, certify that I was present at and did personally superintend the survey represented by this plan, and that the survey and plan are correct. The survey was completed on the 17th day of October, 1984.

This plan lies within the Fraser- Fort George Regional District.

W. D. USHER & ASSOCIATES  
LAND SURVEYORS  
PRINCE GEORGE — B.C.  
PG75 14535