

PLOTTED

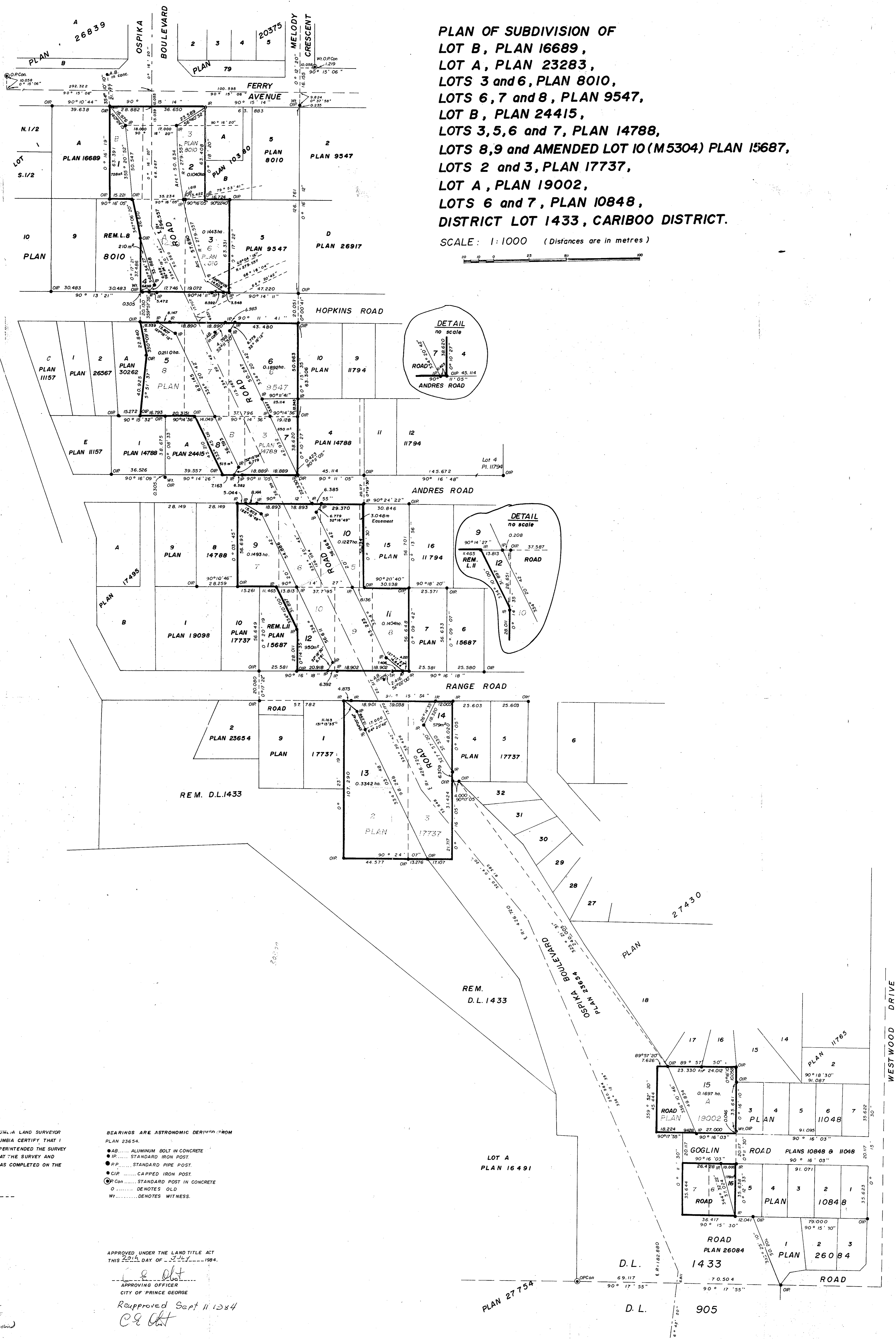
HH, GH

PLAN NO. 30304  
DEPOSITED IN THE LAND TITLE OFFICE AT PRINCE GEORGE  
THIS 25th DAY OF July 1984.

W6  
REGISTRAR

PLAN OF SUBDIVISION OF  
LOT B, PLAN 16689,  
LOT A, PLAN 23283,  
LOTS 3 and 6, PLAN 8010,  
LOTS 6, 7 and 8, PLAN 9547,  
LOT B, PLAN 24415,  
LOTS 3, 5, 6 and 7, PLAN 14788,  
LOTS 8, 9 and AMENDED LOT 10 (M 5304) PLAN 15687,  
LOTS 2 and 3, PLAN 17737,  
LOT A, PLAN 19002,  
LOTS 6 and 7, PLAN 10848,  
DISTRICT LOT 1433, CARIBOO DISTRICT.

SCALE: 1:1000 (Distances are in metres)



I VICTOR BARTELL A BRITISH COLUMBIA LAND SURVEYOR  
OF PRINCE GEORGE IN BRITISH COLUMBIA CERTIFY THAT I  
WAS PRESENT AND PERSONALLY SUPERINTENDED THE SURVEY  
REPRESENTED BY THIS PLAN AND THAT THE SURVEY AND  
PLAN ARE CORRECT. THE SURVEY WAS COMPLETED ON THE  
6th DAY OF JULY, 1984.

*Victor Bartell*  
VICTOR BARTELL, B.C.L.S.

BEARINGS ARE ASTROMIC DERIVED FROM  
PLAN 23654.  
● AB..... ALUMINUM BOLT IN CONCRETE  
● IR..... STANDARD IRON POST  
● RP..... STANDARD PIPE POST  
● CIP..... CAPPED IRON POST  
● CP..... STANDARD POST IN CONCRETE  
○..... DENOTES OLD  
W..... DENOTES WITNESS.

APPROVED UNDER THE LAND TITLE ACT  
THIS 25th DAY OF July 1984.

*C. G. Oat*  
APPROVING OFFICER  
CITY OF PRINCE GEORGE

Approved Sept 11 1984  
*C. G. Oat*

CITY OF PRINCE GEORGE

MAYOR *W. M. ...*

CLERK *A. D. ...*

THIS PLAN LIES WITHIN THE FRASER FORT  
GEORGE REGIONAL DISTRICT.

McWILLIAM, WHYTE, GOBLE, & ASSOCIATES,  
B.C. LAND SURVEYORS,  
PRINCE GEORGE-KAMLOOPS-SMITHERS-SALMON ARM.

REF. NO. 84026  
D.L. 1433