

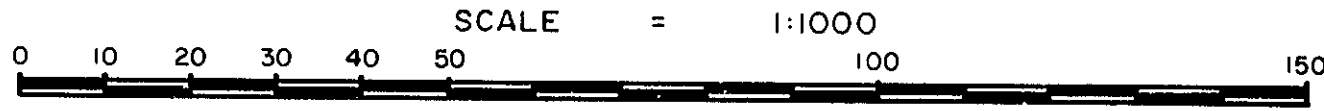
26-FF-226

EXPLANATORY PLAN OF STATUTORY RIGHT-OF-WAY THROUGH
CLOSED 13TH AVENUE (PLAN 30149) ADJACENT TO BLOCK 213,
CLOSED PRINCE RUPERT STREET (PLAN 30149) ADJACENT
TO BLOCKS 212, AND 213,
CLOSED VANCOUVER STREET (PLAN 30149) ADJACENT TO BLOCK 212,
AND CLOSED LANE (PLAN 30149) WITHIN BLOCKS 212 AND 213,
ALL IN PLAN 1268

DISTRICT LOT 343
CARIBOO DISTRICT - BRITISH COLUMBIA

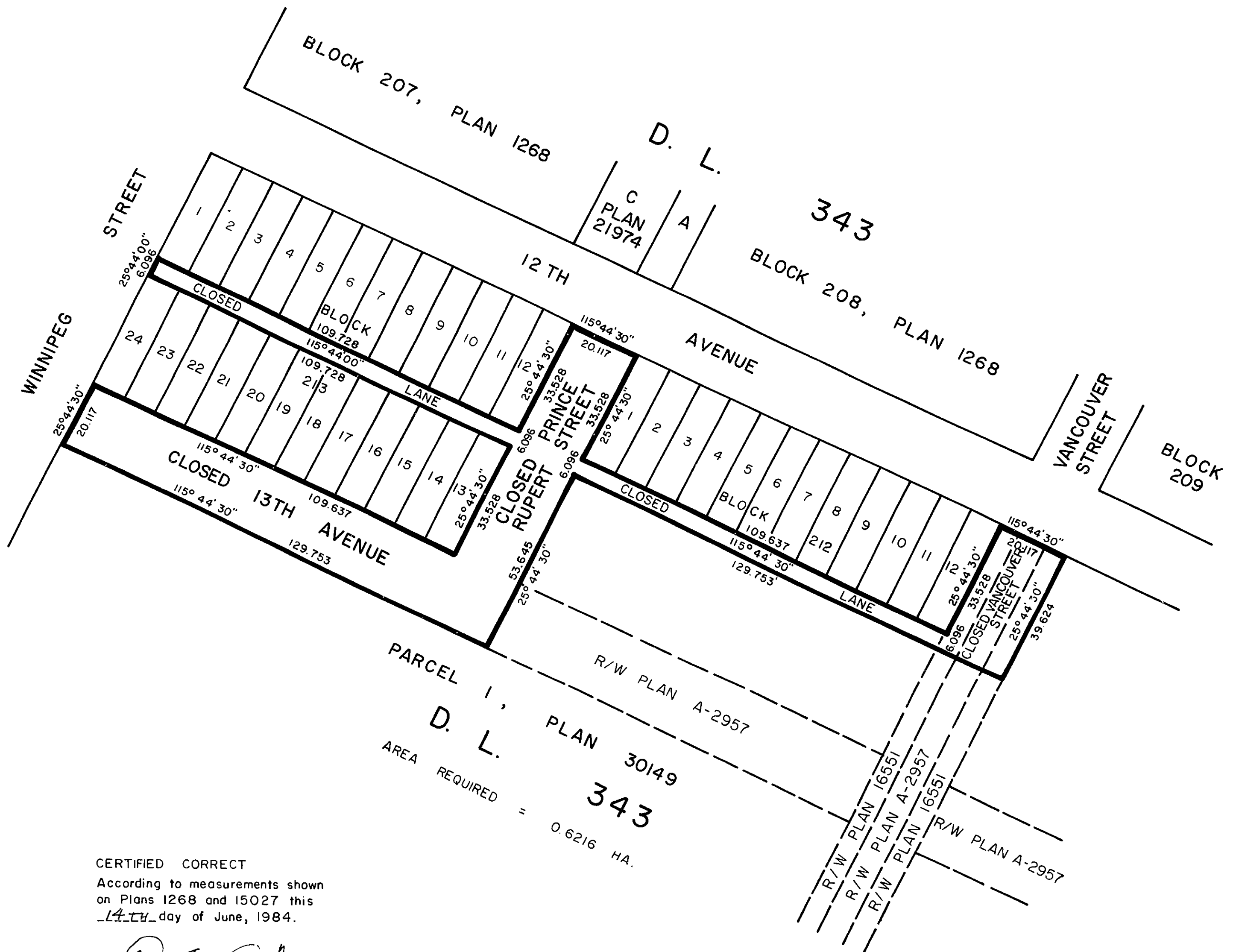
PLAN No. **30296**
Deposited in the Land Title Office
at Prince George, B. C. this 20th
day of Sept, 1984.

Registrar W. B. Gandy



NOTE: Bearings are astronomic, derived from Plan 30149.

AREA OF RIGHT-OF-WAY = 0.6216 HA.



PARCEL 1,
D. L. PLAN 30149
AREA REQUIRED = 0.6216 HA.

CERTIFIED CORRECT
According to measurements shown
on Plans 1268 and 15027 this
14th day of June, 1984.

D. A. Duffy
D. A. Duffy, B.C.L.S.

This plan lies within the Fraser-Fort
George Regional District.