

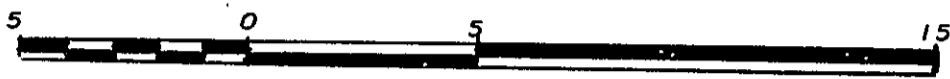
26-FF-226

**PLAN OF STATUTORY RIGHT-OF-WAY
IN LOT 16, PLAN 16589, D.L. 2433,
CARIBOO DISTRICT.**

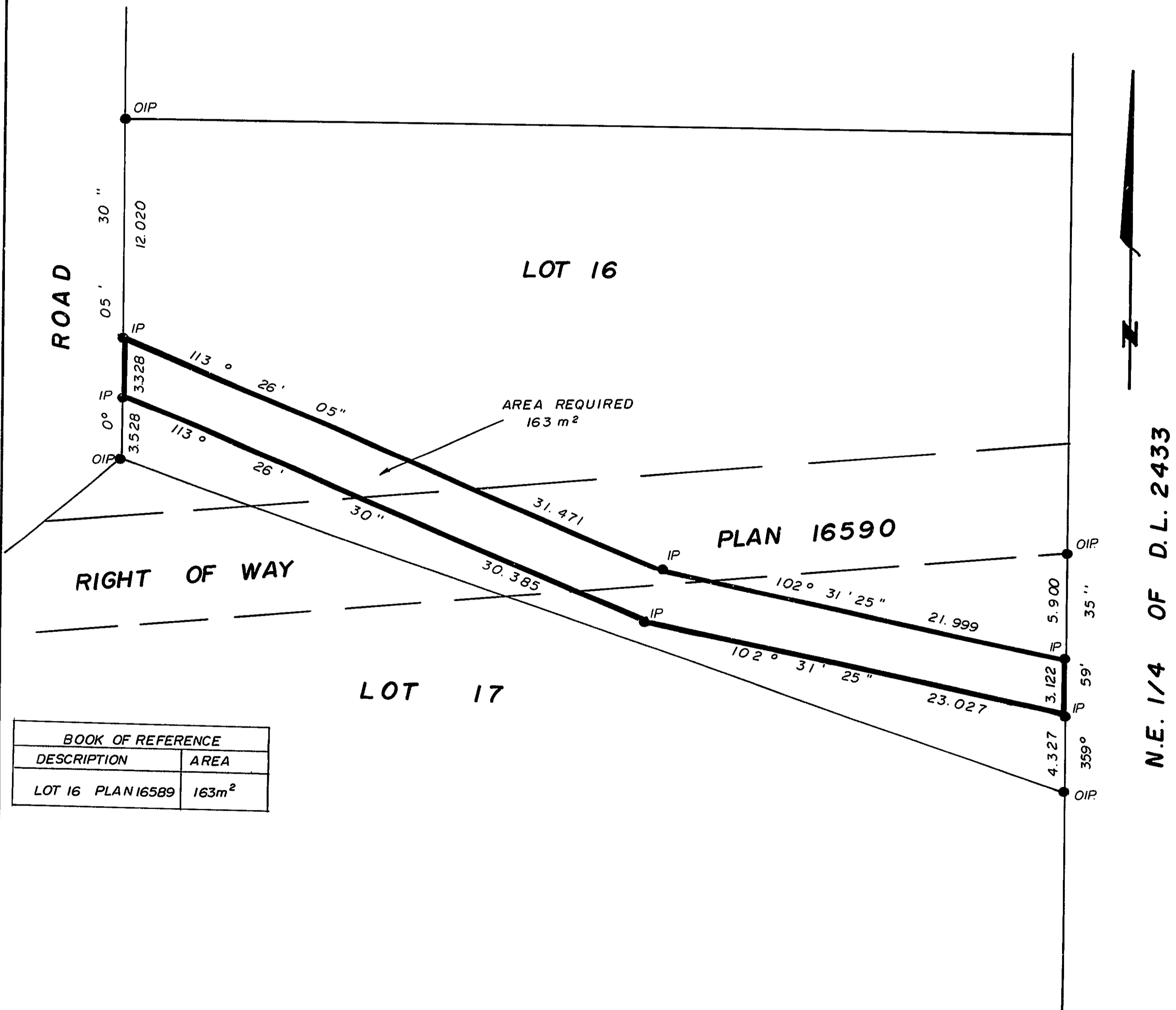
PLAN NO. 30290

Deposited in the Land Title Office at Prince George
this 17th day of Sept 1984.

SCALE: 1:250 (DISTANCES ARE IN METRES)



--- *W.S. Gandy* ---
Registrar



BOOK OF REFERENCE		
DESCRIPTION		AREA
LOT 16	PLAN 16589	163m ²

BEARINGS ARE ASTRONOMIC DERIVED FROM
PLAN 16589.

- IP.....STANDARD IRON POST.
-DENOTES "OLD"

I, D. KEOWN, A BRITISH COLUMBIA LAND SURVEYOR
OF PRINCE GEORGE IN BRITISH COLUMBIA CERTIFY
THAT I WAS PRESENT AT AND PERSONALLY SUPERINTENDED
THE SURVEY REPRESENTED BY THIS PLAN AND THAT THE
SURVEY AND PLAN ARE CORRECT. THE SURVEY WAS
COMPLETED ON THE 30th DAY OF August 1984.

Dale Keown

DALE KEOWN, B.C.L.S.

THIS PLAN LIES WITHIN THE FRASER FORT GEORGE
REGIONAL DISTRICT.

McWILLIAM, WHYTE, GOBLE & ASSOCIATES,
B.C. LAND SURVEYORS,
PRINCE GEORGE - KAMLOOPS - SMITHERS - SALMON ARM

REF. NO. 84091