

G. L. J. G.

EXPLANATORY PLAN OF LEASE OF PART
 OF THE GROUND FLOOR OF BUILDING
 AND EASEMENT AREA ON
 PARCEL C (UI2056), BLOCK 56, PLAN 696
DISTRICT LOT 936
 CARIBOO DISTRICT - BRITISH COLUMBIA

PLAN N^o 30253

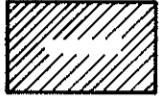
Deposited in the Land Title Office
 at Prince George, B.C. this 22
 day of August, 1984.

SCALE = 1:200

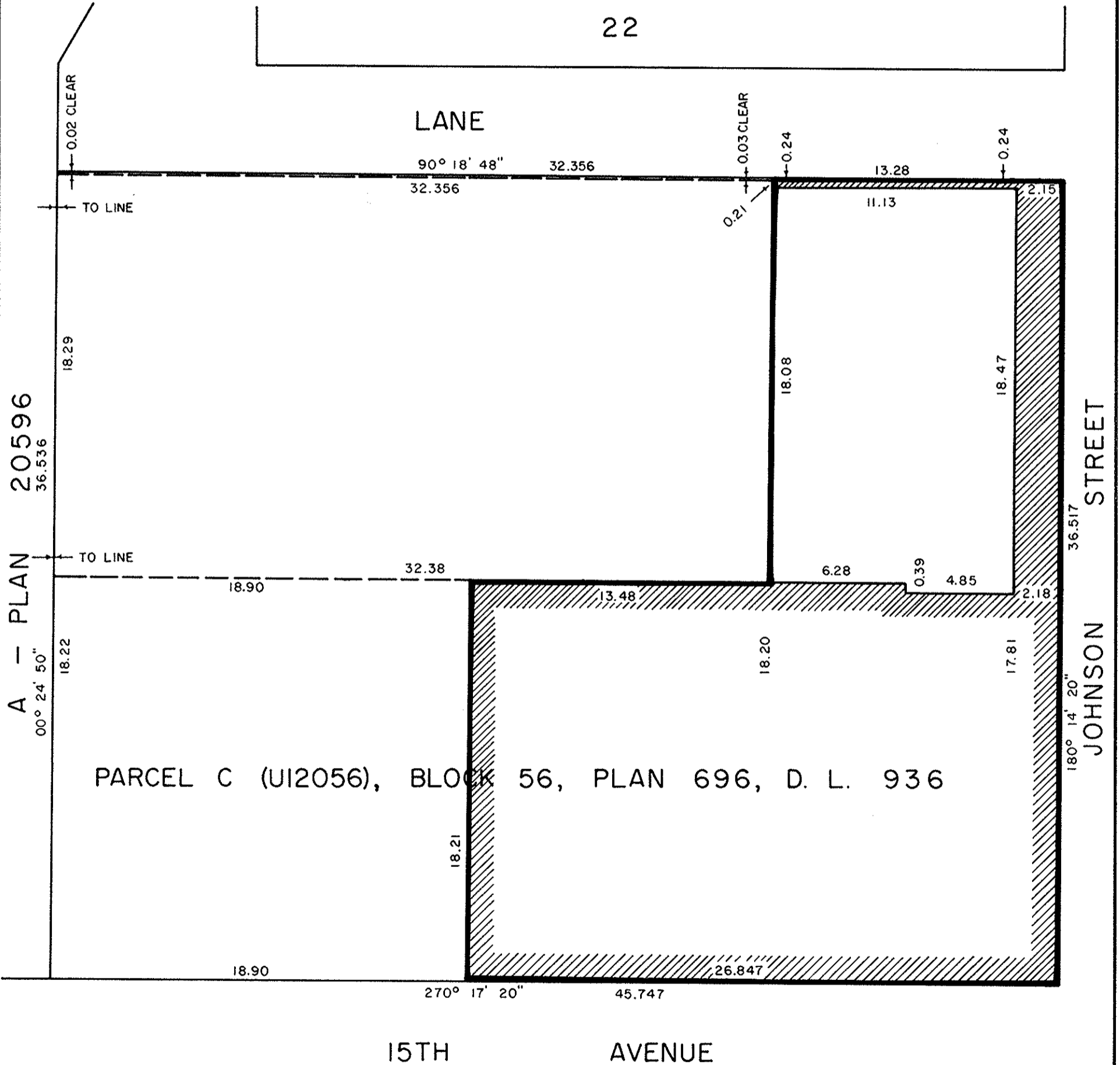


W. G. Gandy
 Registrar

NOTE: Bearings are astronomic, derived from the east
 boundary of Lot A, D. L. 936, Plan 20596.



Access easement is shown thus.



CERTIFIED CORRECT
 This 7th day of May, 1984.

D. A. Duffy, B.C.L.S.

This plan lies within the Fraser - Fort
 George Regional District.

W. D. USHER & ASSOCIATES
 LAND SURVEYORS
 PRINCE GEORGE - B.C.
 14334