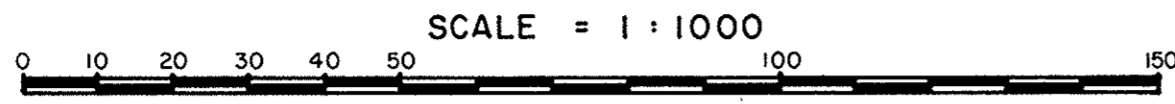


PLOTTED GW

PLAN OF SUBDIVISION OF REMAINDER OF LOT 1, PLAN 18857 AND PARTS OF LOTS 41, 45, AND 46, PLAN 15556 DISTRICT LOT 2433 CARIBOO DISTRICT - BRITISH COLUMBIA

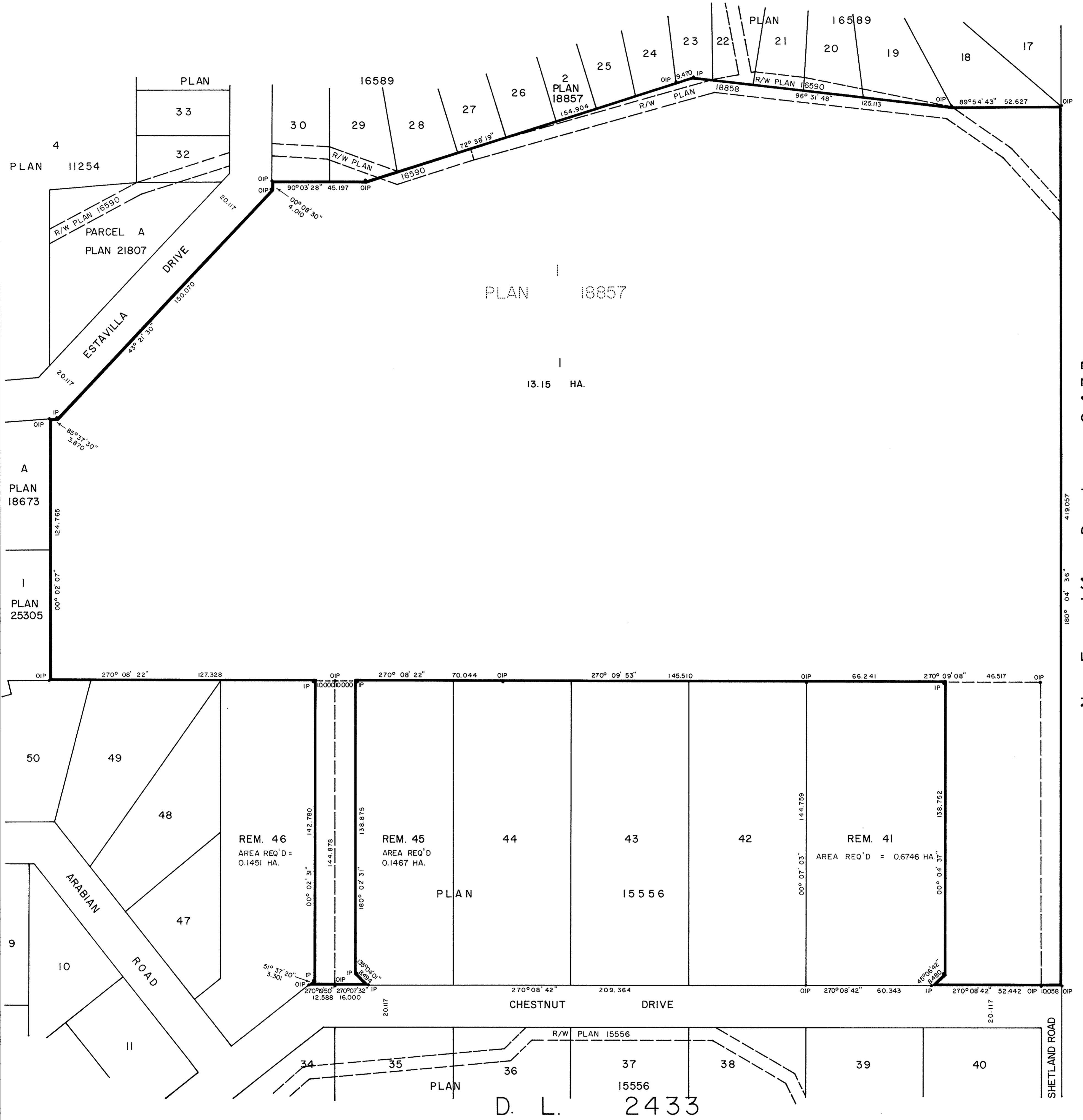
PLAN No 30220
Deposited in the Land Title Office at Prince George, BC, this 14 day of August, 1984
W. G. GANDY Registrar



NOTE: Bearings are astronomic, derived from the southeasterly boundary of Estavilla Drive as shown on Plan 18857.

LEGEND: • OIP denotes an old iron pin found.
• IP denotes an iron pin set.

D. L. 2433



PLAN 18857

13.15 HA.

N. E. 1/4 D. L. 2433

D. L. 2433

I, DONALD A. DUFFY, a British Columbia Land Surveyor, of Prince George, in British Columbia, certify that I was present at and did personally superintend the survey represented by this plan, and that the survey and plan are correct. The survey was completed on the 20 day of May, 1984.

[Signature]

NORTHSIDE DEVELOPMENTS LTD.

[Signature]
Authorized signatory

Authorized signatory

Approved under the Land Title Act this 26 day of July, 1984

[Signature]
Approving Officer, City of Prince George.

This plan lies within the Fraser-Fort George Regional District.