

PLOTTED *HL*

PLAN TO ACCOMPANY
BYLAW N^o 4035 OF THE CITY OF PRINCE GEORGE
CLOSING PART OF 13TH AVENUE ADJACENT TO BLOCK 213,
PART OF PRINCE RUPERT STREET ADJACENT TO BLOCKS 212 & 213,
PART OF VANCOUVER STREET ADJACENT TO BLOCK 212,
LANE WITHIN BLOCKS 212 & 213
ALL IN PLAN 1268
DISTRICT LOT 343
CARIBOO DISTRICT— BRITISH COLUMBIA

PLAN N^o 30149
Deposited in the Land Title
Office at Prince George, B.C. this
20 day of JULY, 1984

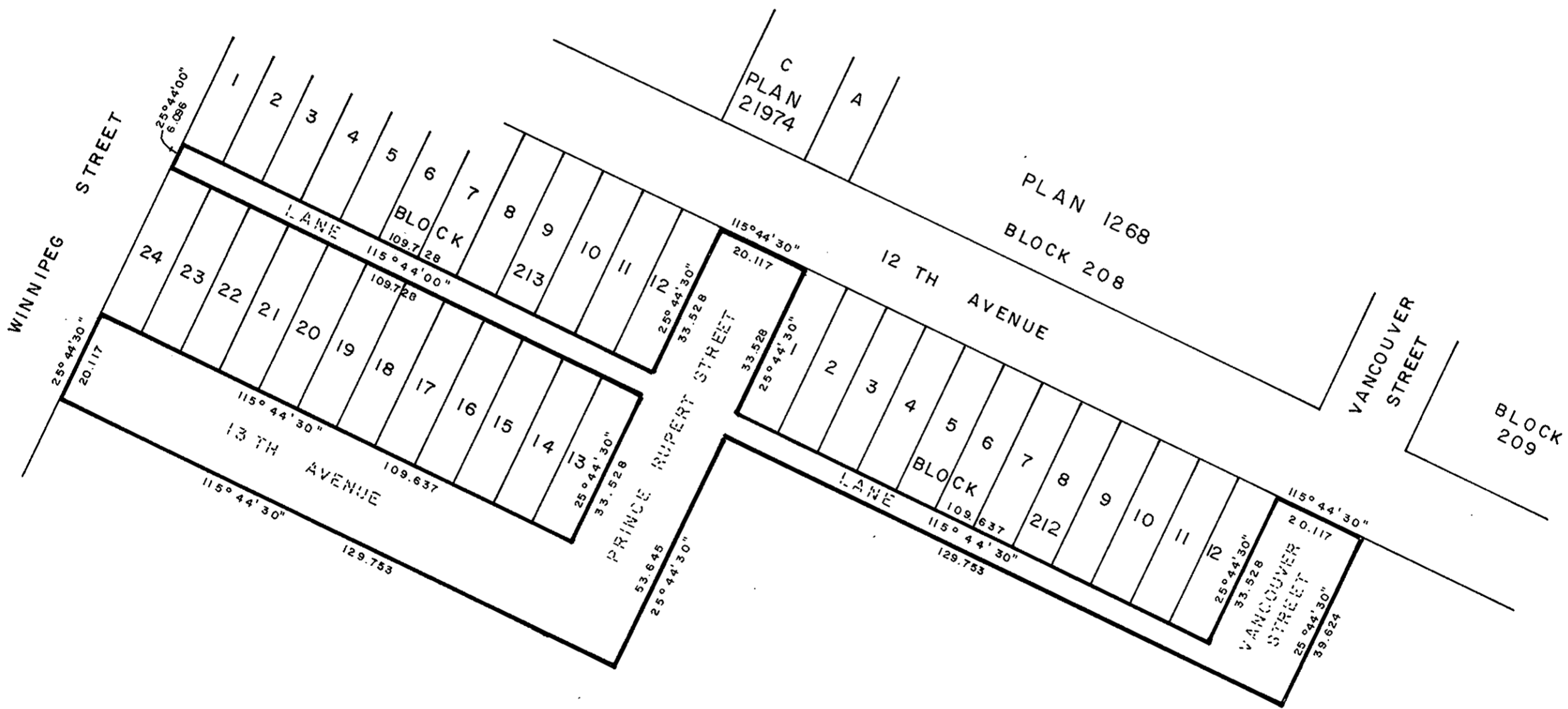
W.G. GANDY
Registrar

SCALE: 1 : 1000



NOTE: Bearings are astronomic, derived from
Plans 1268 & 15027.

Total areas of closed roads and lanes = 0.6216 HA.



LOT 1
PLAN 15904
D.L. 343

CERTIFIED CORRECT
According to measurements shown
on Plans 1268 and 15027.
This 16 day of August, 1982.

[Signature]
D. A. DUFFY, B.C.L.S.

Approved under the Land Title Act
this 10 day of JULY, 1984.

[Signature]
Approving Officer, City of Prince George

This plan lies within the Fraser-FortGeorge
Regional District.

W. D. USHER & ASSOCIATES
LAND SURVEYORS
PRINCE GEORGE — B. C.
11898-01