

D. L. 4028

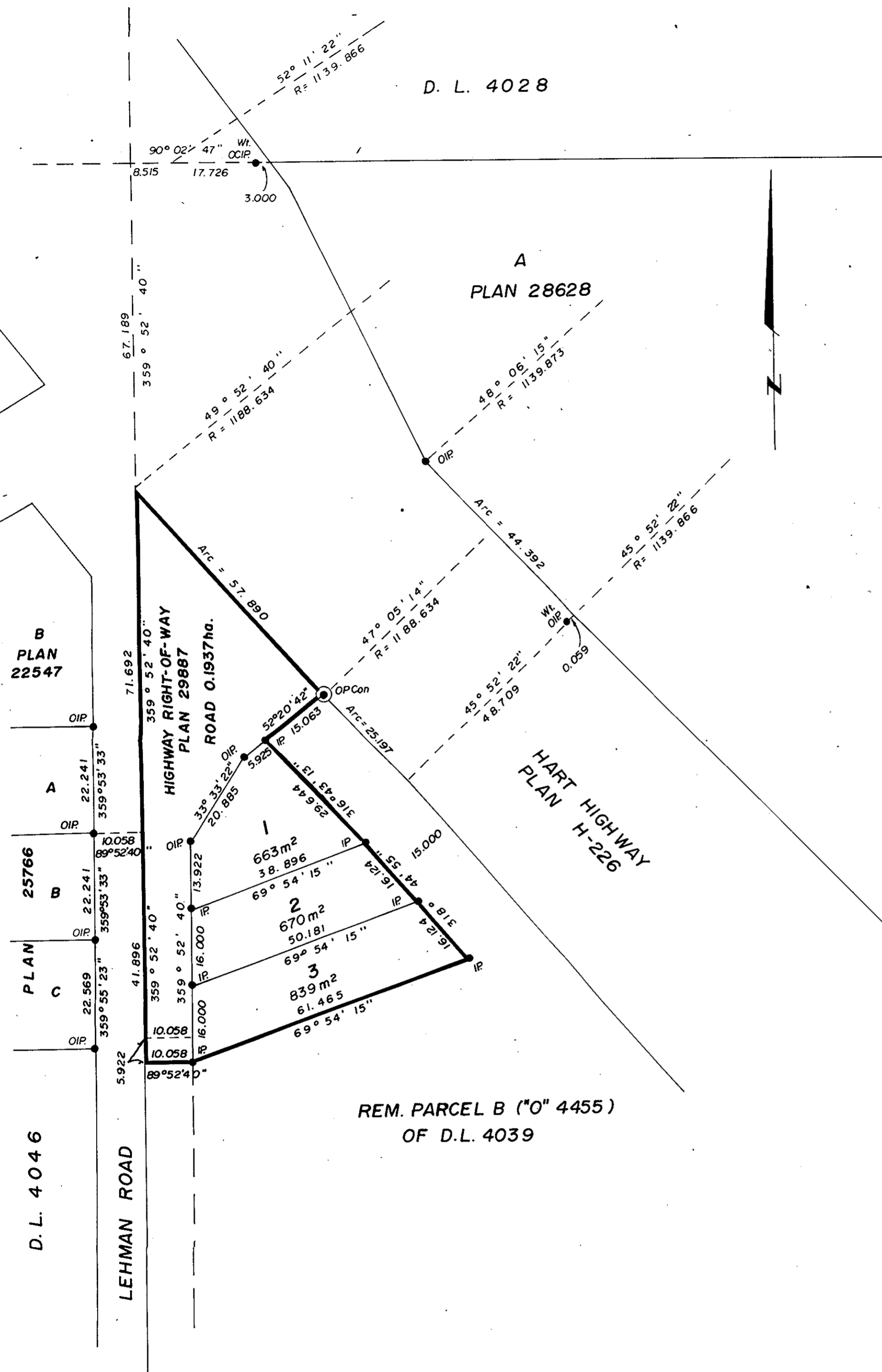
PLAN 50110

Deposited in the Land Title Office at Prince George, B.C. on the 17 day of JULY 1984.

W.G.GANDY Registrar

PLAN OF SUBDIVISION OF PART OF PARCEL B ("O"4455) OF D.L.4039 EXCEPT PLANS H226, 28088 and 28628, CARIBOO DISTRICT.

SCALE: 1:750 (DISTANCES ARE IN METRES)



REM. PARCEL B ("O" 4455) OF D.L. 4039

Bearings are astronomic and are derived from Plan 28628.

- Legend for symbols: P.con (Standard Concrete Post), P.Rock (Standard Rock Post), PP (Standard Pipe Post), I.P (Standard Iron Post), P (Wooden Post), L.P (Lead Plug), O (Denoting "Old"), WT (Denoting "Witness"), CIP (Capped Iron Post), TH (Traverse Hub).

Owner: MATTE BROS. & SONS CONSTRUCTION (1974) LTD. Incorporation # 126691.

Authorized Signatories

I, V. Bartell, a British Columbia land surveyor, of Prince George, in British Columbia, certify that I was present at and personally superintended the survey represented by this plan, and that the survey and plan are correct. The survey was completed on the 12 day of May 1984.

V. Bartell, B.C.L.S.

Approved under the Land Title Act on the 27 day of June 1984.

C.E. Platt, Approving Officer, City of Prince George

This Plan lies within the Fraser Fort George Regional District

McWilliam-Whyte-Goble & Associates B.C. Land Surveyors Kamloops-Prince George-Salmon Arm-Smithers FB/P DL 4039. File No. 84044