

PLOTTED JN

BRITISH COLUMBIA HYDRO AND POWER AUTHORITY

PLAN No. 30111
Deposited in the Land Title Office at Prince George, B.C. this 25th day of July, 1984

W. J. Gandy
Registrar

REFERENCE PLAN OF STATUTORY RIGHT - OF - WAY OVER UNSURVEYED CROWN LAND BEING PART OF THE BED OF THE NECHAKO RIVER ADJACENT TO DISTRICT LOTS 1511 AND 2166 CARIBOO DISTRICT - BRITISH COLUMBIA

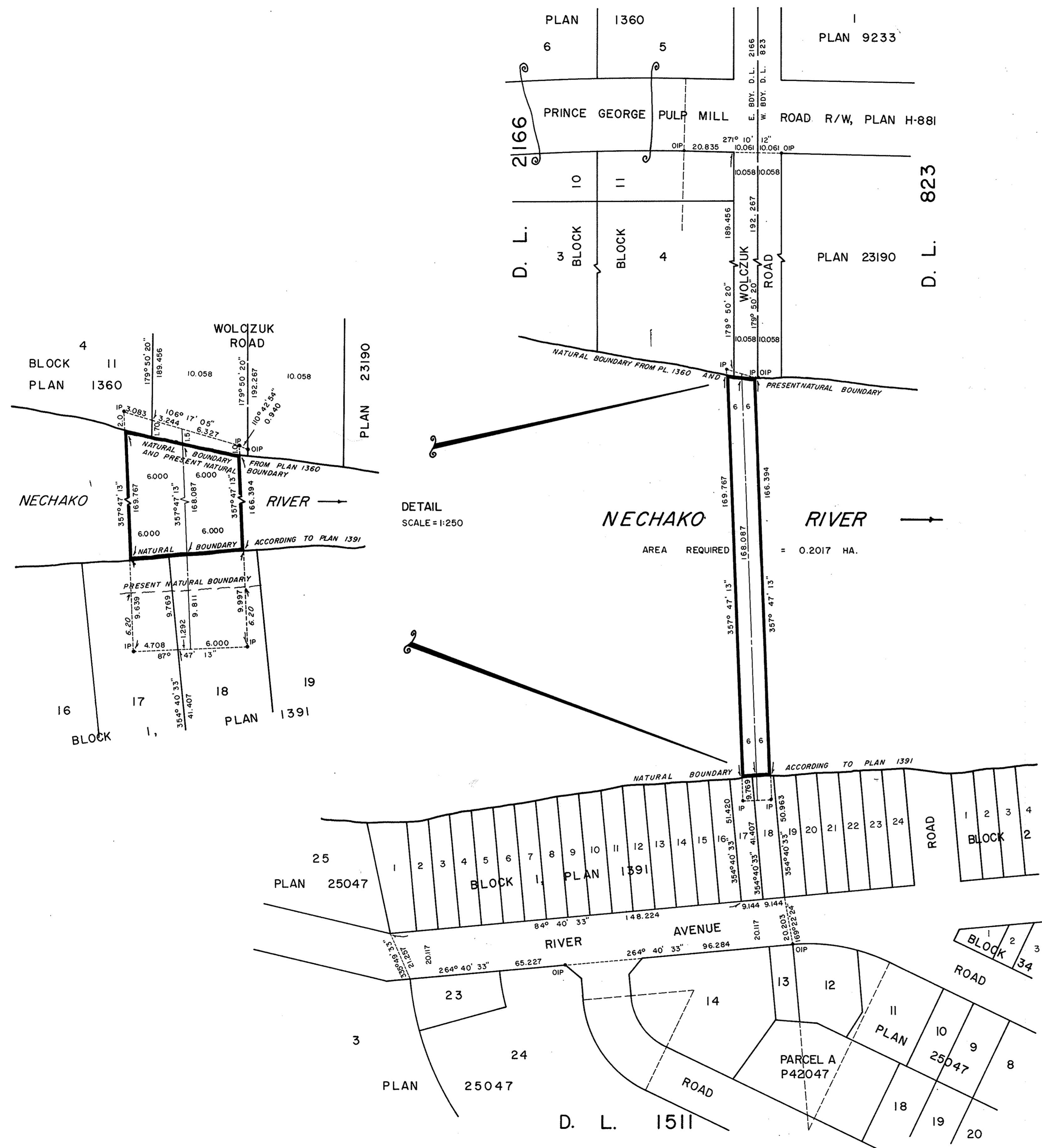
SCALE = 1:1000



NOTE: Bearings are astronomic, derived from the east boundary of D. L. 2166 as shown on Plan H-881.
Distances are shown in metres.

LEGEND: ● OIP denotes an old iron pin found.
● IP denotes an iron pin set.

BOOK OF REFERENCE	
DESCRIPTION	AREA REQUIRED
UNSURVEYED CROWN LAND BEING PART OF THE BED OF THE NECHAKO RIVER.	0.2017 HA.



DETAIL SCALE = 1:250

NECHAKO RIVER
AREA REQUIRED = 0.2017 HA.



I, DONALD A. DUFFY, a British Columbia Land Surveyor, of Prince George, in British Columbia, certify that I was present at and personally superintended the survey represented by this plan, and that the survey and plan are correct. The survey was completed on the 17th day of April, 1984.

I hereby certify that this is a true copy of the Official Plan on deposit with the Surveyor General, Ministry of Lands, Parks and Housing and numbered 10 tube 1237

Surveyor General
Victoria, B.C. JUNE 13, 1984

This plan lies within the Fraser-Fort George Regional District.