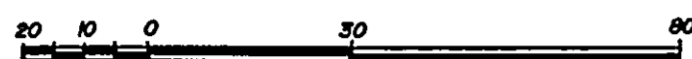


26-FF-226

PLAN OF STATUTORY RIGHT-OF-WAY
IN THE REMAINDER OF THE N.W. 1/4
DISTRICT LOT 4047, CARIBOO DISTRICT.

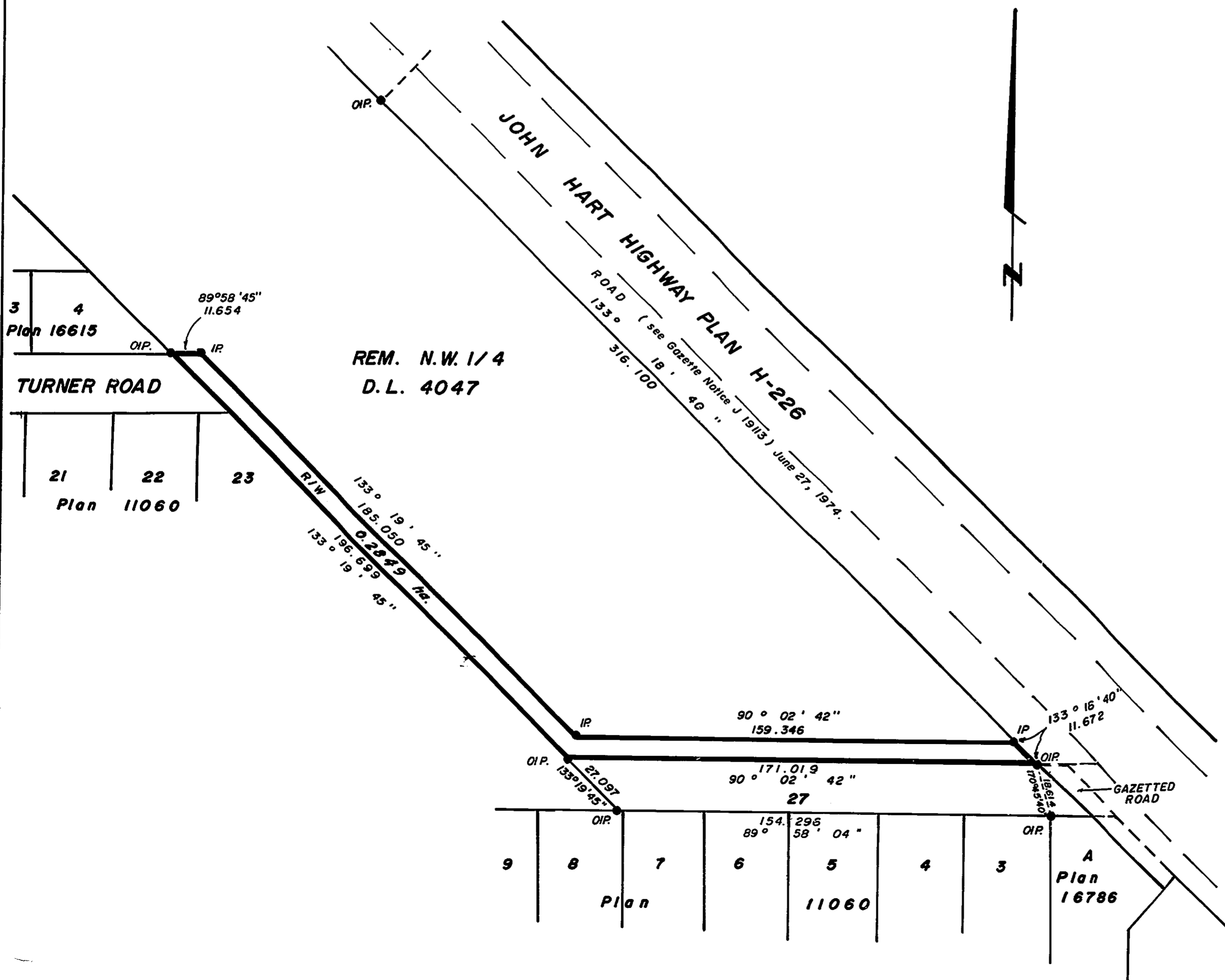
SCALE : 1:1250 (DISTANCES ARE IN METRES)



PLAN NO. 30102

DEPOSITED IN THE LAND TITLE OFFICE AT PRINCE GEORGE
THIS 25th DAY OF June 1984.

W. S. Sandy
REGISTRAR



LEGEND

BEARINGS ARE ASTRONOMIC DERIVED FROM W.BDY OF HIGHWAY PLAN H 226 - $133^{\circ} 18' 40''$. (SEE PLAN 28664)

- I.P. STANDARD IRON POST.
- DENOTES "OLD"

I, VICTOR BARTELL, A BRITISH COLUMBIA LAND SURVEYOR OF PRINCE GEORGE IN BRITISH COLUMBIA CERTIFY THAT I WAS PRESENT AT AND PERSONALLY SUPERINTENDED THE SURVEY REPRESENTED BY THIS PLAN AND THAT THE SURVEY AND PLAN ARE CORRECT. THE SURVEY WAS COMPLETED ON THE 8th DAY OF FEBRUARY, 1984.

Victor Bartell
VICTOR BARTELL, B.C.L.S.

BOOK OF REFERENCE	
Description	Area
REM. N/W 1/4 D.L. 4047	0.2849 ha.

THIS PLAN LIES WITHIN THE FRASER FORT GEORGE REGIONAL DISTRICT.

McWILLIAM, WHYTE, GOBLE, & ASSOCIATES,
B.C. LAND SURVEYORS,
PRINCE GEORGE-KAMLOOPS-SMITHERS-SALMON ARM.

REF. NO. 84013