

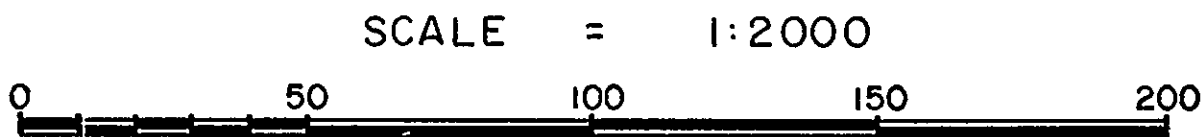
26-FF-226

REFERENCE PLAN OF EASEMENT THROUGH
PARCEL A, (PLAN 22685) OF LOT 1, PLAN 21728 &
LOT B, PLAN 30095
DISTRICT LOT 4031
CARIBOO DISTRICT - BRITISH COLUMBIA

PLAN No **30096**

Deposited in the Land Title
Office at Prince George, B.C. this
20th day of June, 1984

W.D. Usher
Registrar

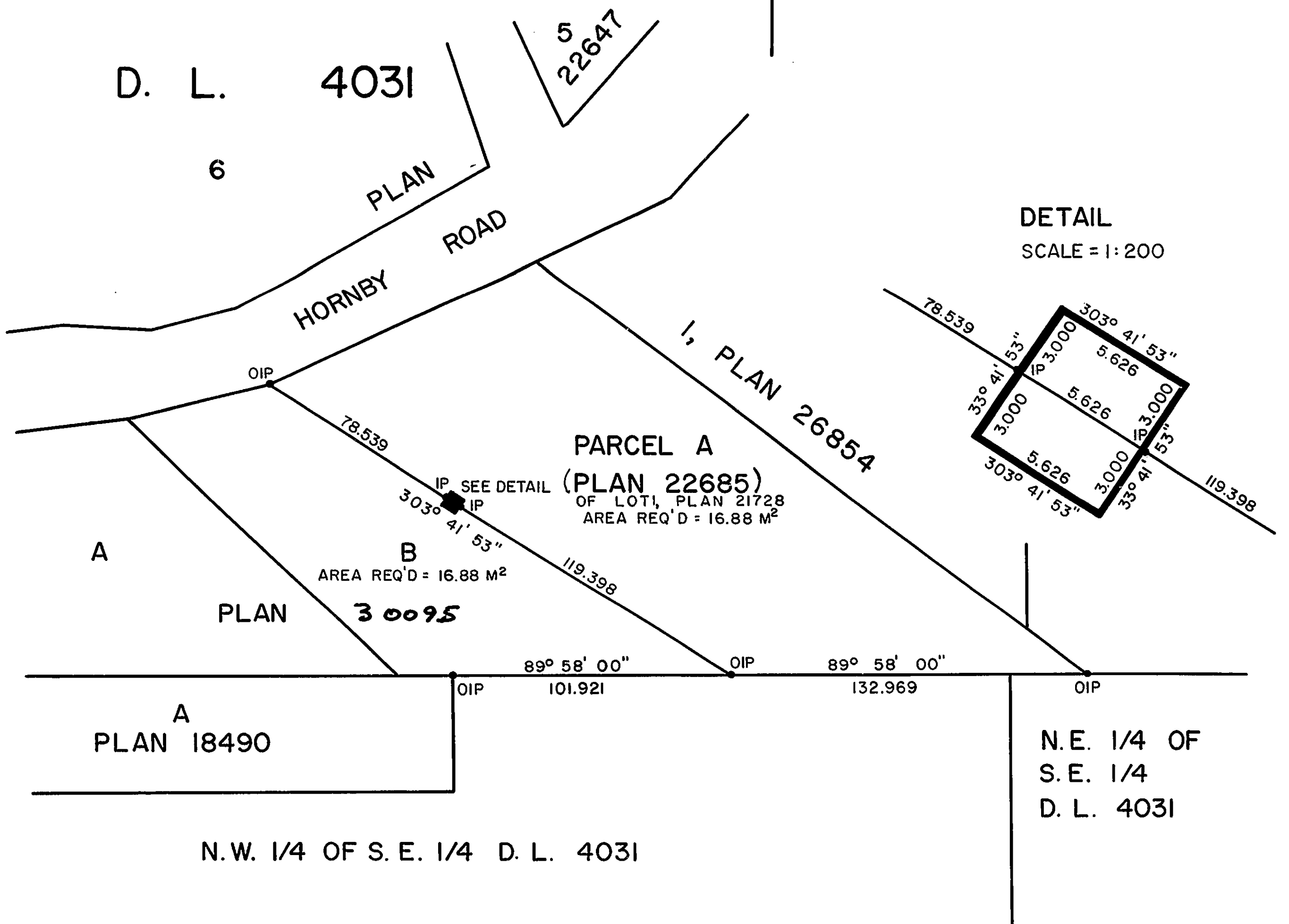


NOTE: Bearings are astronomic, derived from the north
boundary of N.W. 1/4 of S.E. 1/4 D. L. 4031
as shown on Plan 21728.

LEGEND: ● OIP denotes an old iron pin found.
● IP denotes an iron pin set.

BOOK OF REFERENCE

DESCRIPTION	AREA REQUIRED
PARCEL A (PL. 22685) OF LOT 1, PL. 21728, D.L. 4031	16.88 M ²
LOT B, D.L. 4031, PLAN 30095	16.88 M ²



DETAIL
SCALE = 1:200

N.E. 1/4 OF
S.E. 1/4
D. L. 4031

N.W. 1/4 OF S. E. 1/4 D. L. 4031

I, DONALD A. DUFFY, a British Columbia Land
Surveyor, of Prince George, in British Columbia,
certify that I was present at and did personally
superintend the survey represented by this plan,
and that the survey and plan are correct. The
survey was completed on the 12th day of April,
1984.

This plan lies within the Fraser- Fort George
Regional District.

W. D. USHER & ASSOCIATES
LAND SURVEYORS
PRINCE GEORGE — B.C.
PJ49 14060A