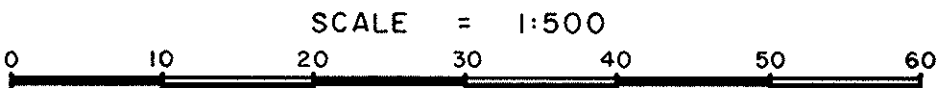


PLOTTED JL

EXPLANATORY PLAN TO ACCOMPANY
AN ENCROACHMENT AGREEMENT
PART OF PARCEL A (R21326) OF LOT 3,
BLOCK 147, PLAN 1268
DISTRICT LOT 343
CARIBOO DISTRICT - BRITISH COLUMBIA

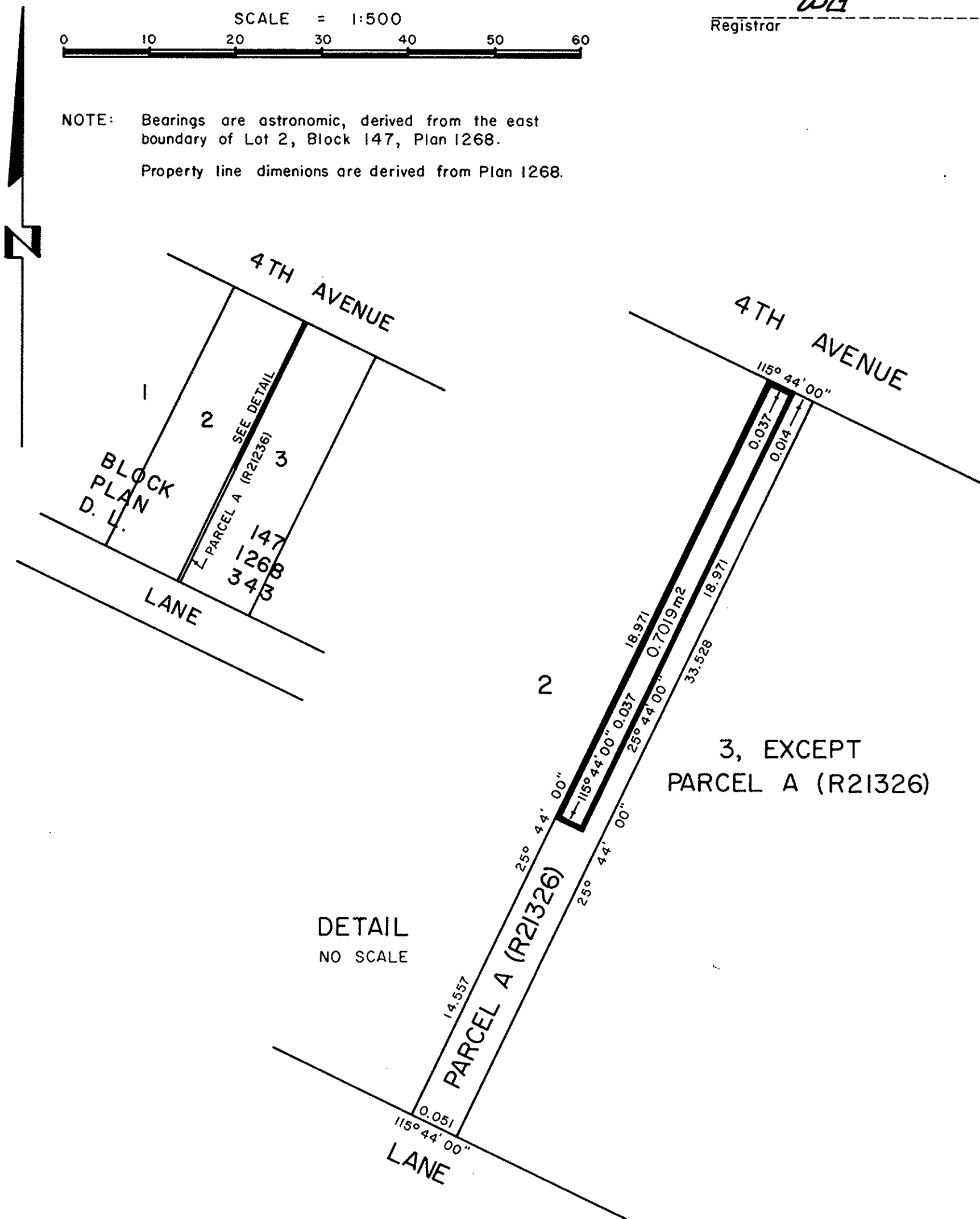
PLAN No 30083

Deposited in the Land Title Office
at Prince George, B. C. this 14th
day of June, 1984.



Registrar WL

NOTE: Bearings are astronomic, derived from the east
boundary of Lot 2, Block 147, Plan 1268.
Property line dimensions are derived from Plan 1268.



DETAIL
NO SCALE

CERTIFIED CORRECT
This 15th day of May, 1984.

[Signature]
D. A. Duffy, B.C.L.S.

This plan lies within the Fraser-Fort
George Regional District.

W. D. USHER & ASSOCIATES
LAND SURVEYORS
PRINCE GEORGE B. C.
14346