

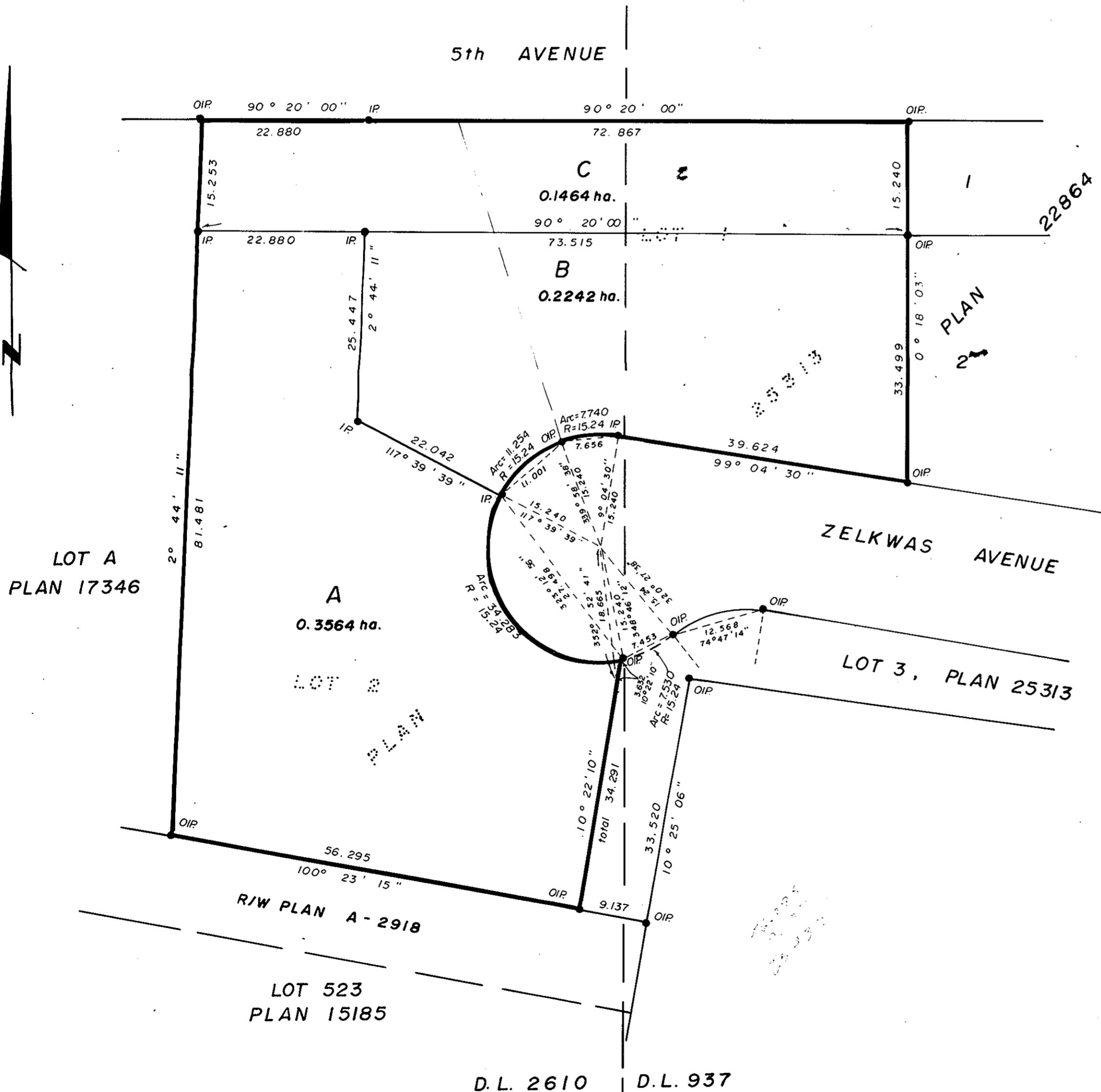
PLAN OF SUBDIVISION OF
 LOT 1, PLAN 25313, DISTRICT LOTS 937 and 2610,
 and LOT 2, PLAN 25313, DISTRICT LOT 2610,
 CARIBOO DISTRICT.

SCALE: 1:500 (DISTANCES ARE IN METRES)



PLAN 30007
 Deposited in the Land Title Office
 at Prince George, B.C.
 on the 11 day of May 1984

J.C.
 Registrar



Bearings are astronomic and are derived from
 Plan 25313.

- P.con. Standard Concrete Post.
- P.Rock Standard Rock Post.
- P.P. Standard Pipe Post.
- I.P. Standard Iron Post.
- P. Wooden Post.
- L.P. Lead Plug.
- Denoting "Old"
- WT. Denoting "Witness"
- C.I.P. Capped Iron Post.
- T.H. Traverse Hub.

I, Victor Bartell, a British Columbia
 land surveyor, of Prince George,
 in British Columbia, certify that I was present
 at and personally superintended the survey
 represented by this plan, and that the survey
 and plan are correct. The survey was completed
 on the 13th day of April 1984.

Victor Bartell, B.C.L.S.

Approved under the Land Title Act on
 the 26 day of April 1984.

[Signature]
 Approving Officer
 City of Prince George

This Plan lies within the Fraser-Fort George
 Regional District

Seal - City of Prince George

[Signature]
 Mayor

[Signature]
 Clerk

McWilliam-Whyte-Goble & Associates
 B.C. Land Surveyors
 Kamloops-Prince George-Salmon Arm-Smithers
 FB/P D.L. 2610 File No. 84028