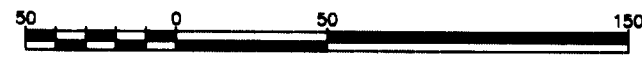


SURVEY PLAN OF BLOCK C AND ROAD OF DISTRICT LOT 748, CARIBOO DISTRICT. B.C.G.S. 93G.087

Scale: 1 : 2500 (Distances are in metres)



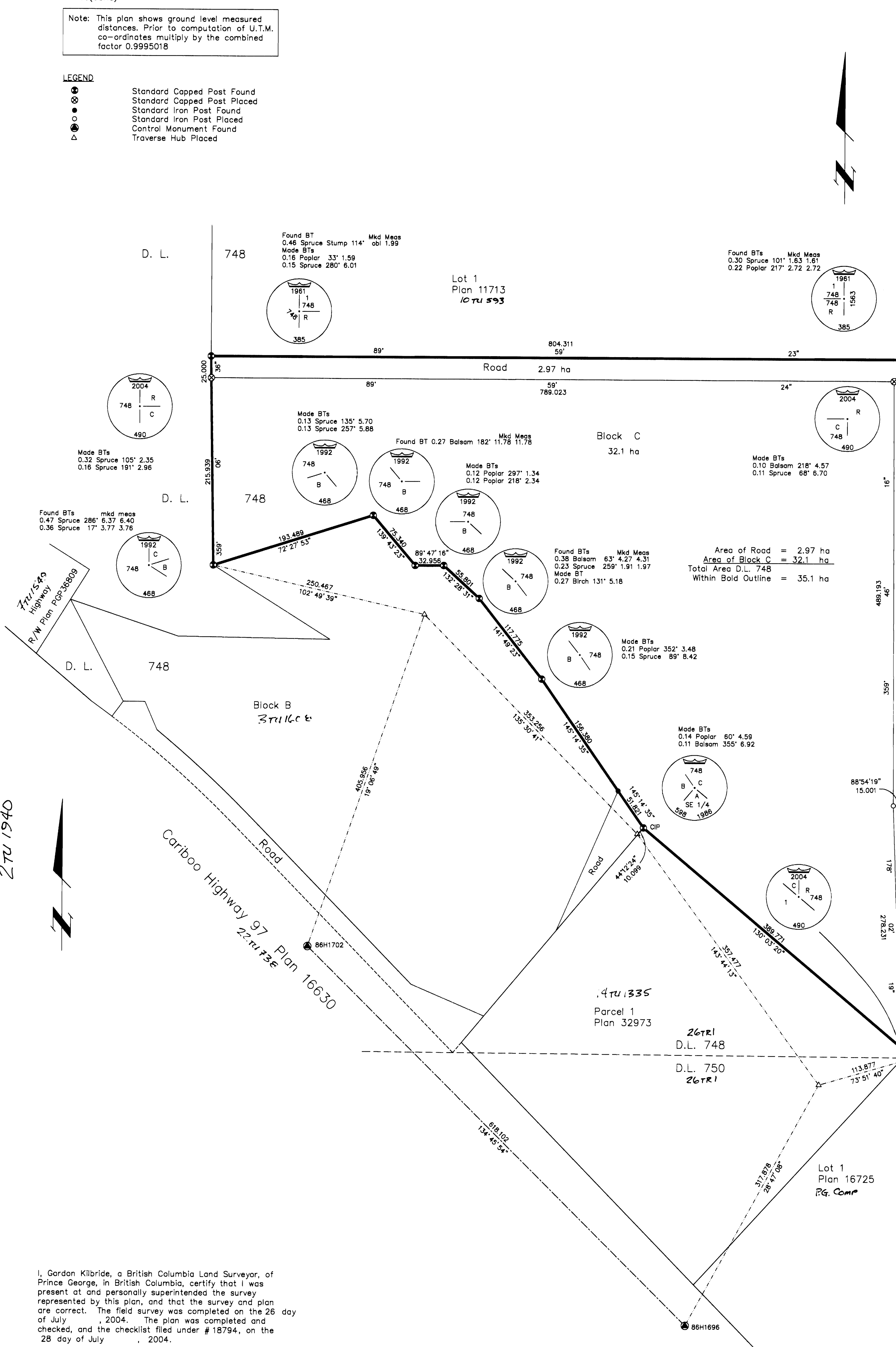
Bearings to BTs are magnetic
Grid bearings are derived from observations between control monuments 86H1702 and 86H1696, integrated survey area number 39, City of Prince George, B.C. NAD83(CSRs)

Note: This plan shows ground level measured distances. Prior to computation of U.T.M. co-ordinates multiply by the combined factor 0.9995018

- LEGEND**
- ⊙ Standard Capped Post Found
 - ⊙ Standard Capped Post Placed
 - Standard Iron Post Found
 - Standard Iron Post Placed
 - ⊙ Control Monument Found
 - ⊙ Traverse Hub Placed

67	Plan	68
D.L.		1264
		887

1	14
D.L. 1563	13
2	10TR 3
3	Plan
4	11
5	10
6	9
7	8
57	70
58	69
Made BTs 0.15 Balsam 01' 7.18 0.27 Spruce 52' 8.11	59
130°33'20"	68
12.179 90°28'09"	916
60	67
	D.L. 1563
	10TR 3
61	66



2TU 1940

I, Gordon Kilbride, a British Columbia Land Surveyor, of Prince George, in British Columbia, certify that I was present at and personally superintended the survey represented by this plan, and that the survey and plan are correct. The field survey was completed on the 26 day of July, 2004. The plan was completed and checked, and the checklist filed under #18794, on the 28 day of July, 2004.

Gordon Kilbride
Gordon Kilbride, B.C.L.S.

OFFICIAL PLAN
CONFIRMED UNDER SECTION 72
LAND ACT

M. Bullock
FOR SURVEY GENERAL
Victoria, B.C. August 18, 2004

This plan lies within the Fraser-Fort George Regional District.

KILBRIDE LAND SURVEYING LTD.
British Columbia Land Surveyors
Prince George, B.C.
Ph: (250) 562-1196 Fax: 562-3656

F.B.- WU51 | D.L.- 748 | File No. - 040035