

EXPLANATORY PLAN TO ACCOMPANY
LEASE OF A PORTION OF THE GROUND FLOOR
OF A BUILDING LOCATED ON
LOT A, PLAN 20275 EXCEPT PLANS
23706 AND 23714
DISTRICT LOT 753
CARIBOO DISTRICT - BRITISH COLUMBIA

SCALE = 1 : 500

29935

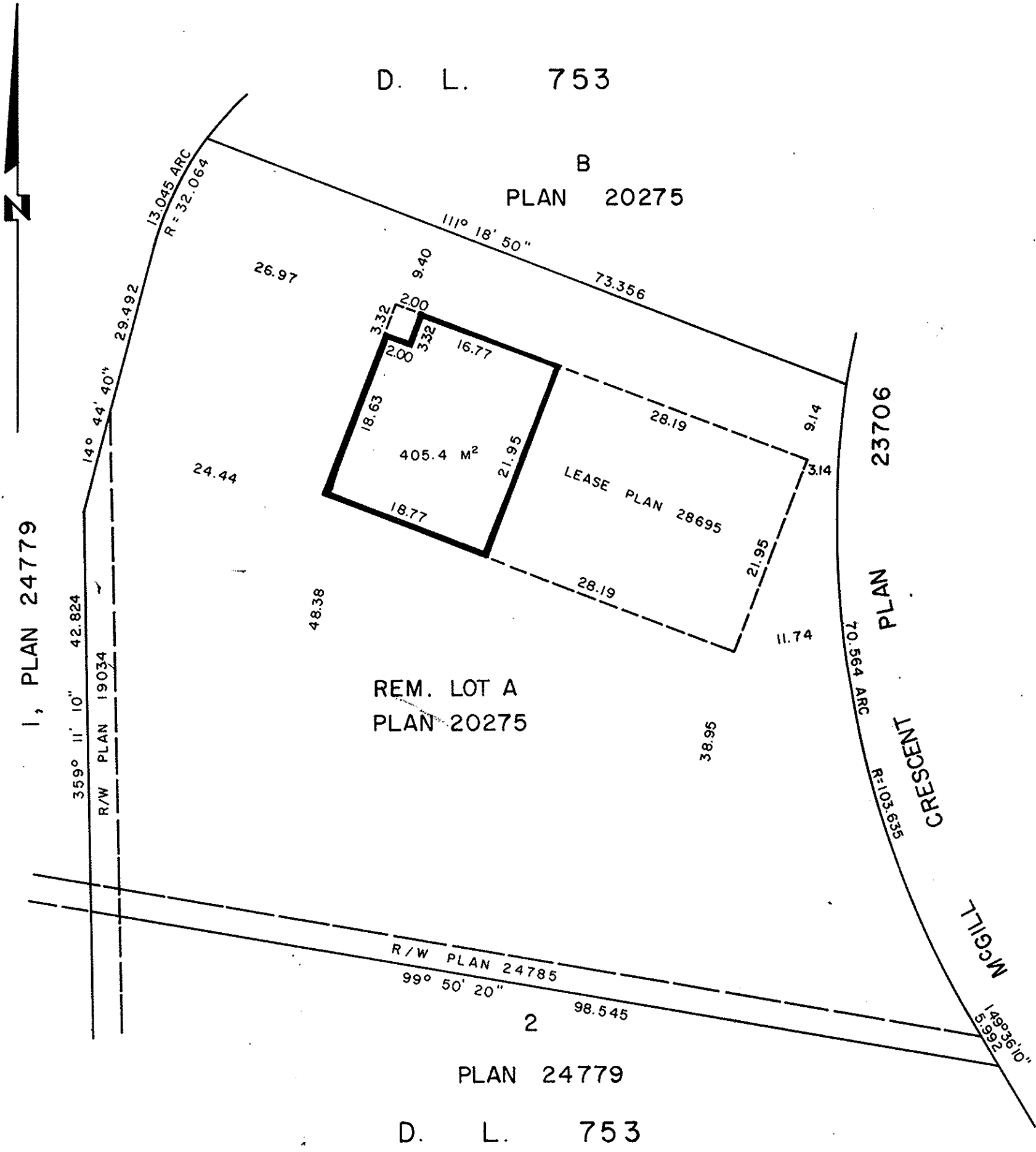
PLAN No _____

Deposited in the Land Title Office
at Prince George, B.C. this *2nd*
day of *April*, 1984.



NOTE: Property dimensions are derived from Plan 23714.

J. Carlson
Registrar



CERTIFIED CORRECT
This *29th* day of *March*, 1984.
[Signature]
D. A. Duffy, B.C.L.S.

This plan lies within the Fraser-Fort
George Regional District.

W.D. USHER & ASSOCIATES
LAND SURVEYORS
PRINCE GEORGE - B.C.
14270