

BRITISH COLUMBIA HYDRO AND POWER AUTHORITY

PLAN No. 29862Deposited in the Land Title Office
of Prince George, B.C. this 3rd
day of March, 1984.PLAN OF STATUTORY RIGHT-OF-WAY PURSUANT TO THE HYDRO
AND POWER AUTHORITY ACT R.S.B.C. 1979, CHAPTER 188THROUGH DISTRICT LOTS 2425, 2432,
4027, 4030, 4036, 815, 821A, AND 818

CARIBOO DISTRICT - BRITISH COLUMBIA

KNOWN FOR PURPOSES OF IDENTIFICATION AS NECHAKO x WILLISTON T/L R/W

SCALE = 1 : 2500

Bearings are astronomic, derived from Polaris observations and are referred
to the meridian through the west boundary of D. L. 2432.

- OIP denotes an old iron pin found.
- IP denotes an iron pin set.
- OPP denotes an old pipe post found.
- PP denotes a pipe post set.
- OCIP denotes an old capped iron pin found.
- OP CON denotes an old concrete monument found.
- WT denotes witness.

BOOK OF REFERENCE

DESCRIPTION	AREA REQUIRED
LOT A, PLAN 17105, D. L. 2425	0.1437 HA.
LOT 33, PLAN 10676, D. L. 2432	573.5 M ²
N. W. 1/4 D. L. 2432	2.534 HA.
S. 1/2 OF N. E. 1/4 D. L. 2432	1.951 HA.
S. E. 1/4 D. L. 2432	0.9513 HA.
N. E. 1/4 D. L. 4027	2.267 HA.
W. 1/2 OF N. W. 1/4 D. L. 4030	1.402 HA.
N. E. 1/4 OF N. W. 1/4 D. L. 4030	1.295 HA.
N. E. 1/4 D. L. 4030	2.732 HA.
FRACTIONAL N. 1/2 D. L. 4036	2.878 HA.
N. W. 1/4 D. L. 815	175.2 M ²
S. W. 1/4 D. L. 815	2.354 HA.
N. 1/2 OF N. 1/2 D. L. 821A	1.356 HA.
S. 1/2 D. L. 821A	2.712 HA.
N. E. 1/4 D. L. 818	2.719 HA.

REM. D. L. 819

B. C. HYDRO R/W
PLAN -----B. C. HYDRO R/W
PLAN A-2870N. E. 1/4 OF N. W. 1/4
D. L. 819

I, DONALD A. DUFFY, a British Columbia Land
Surveyor, of Prince George, in British Columbia,
certify that I was present at and personally
superintended the survey represented by this plan
and that the survey and plan are correct. The
survey was completed on the 30 day of Nov,
1983.

This plan lies within the Fraser - Fort George Regional District.

W. D. USHER & ASSOCIATES
LAND SURVEYORS
PRINCE GEORGE - B. C.
P.F. PL. 13871

BRITISH C

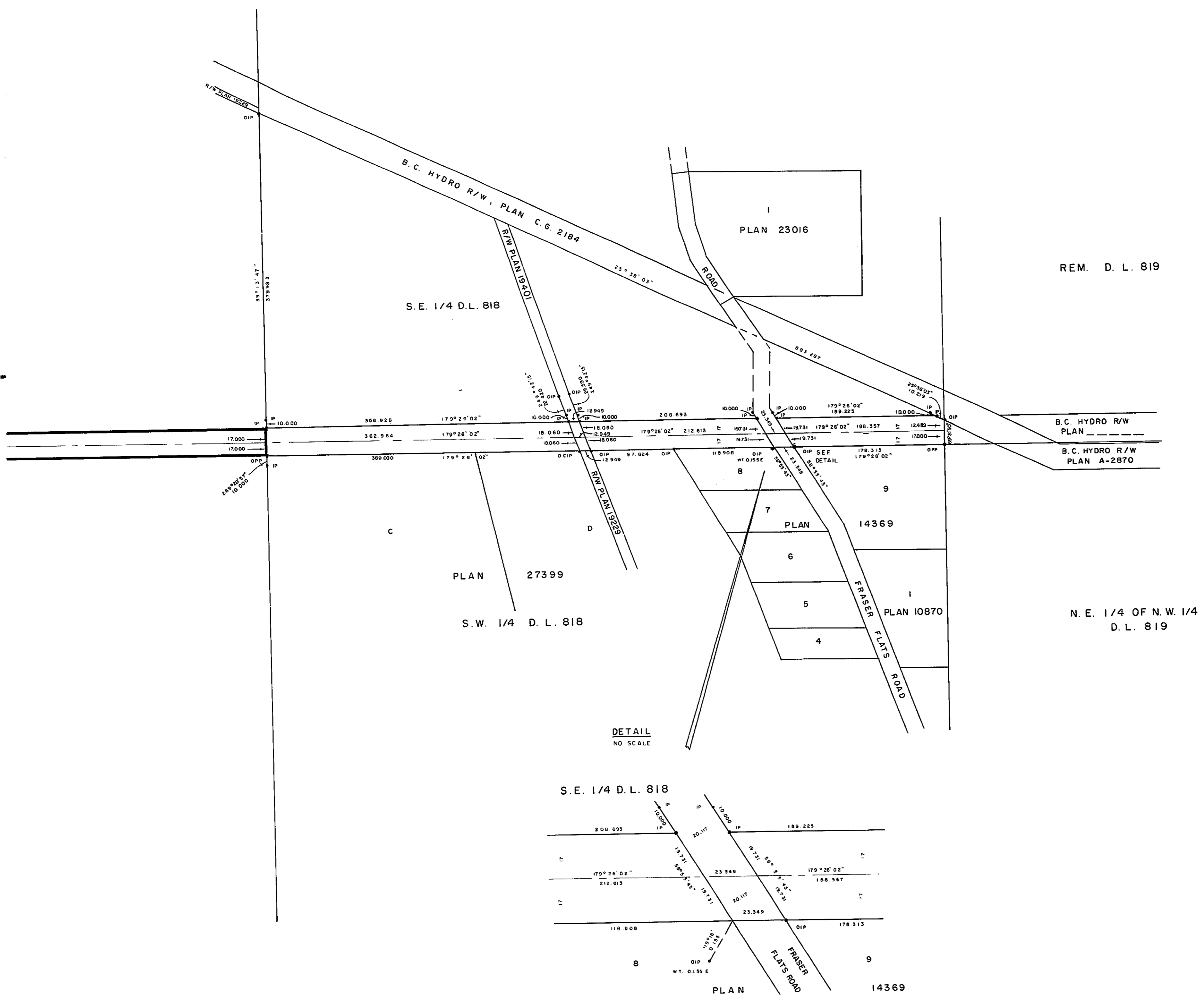
PLAN OF STATUTE
AND POWER AUTH
THROUGH
4027, 403
CARIBOO DIST
KNOWN FOR PURP
SCALE = 1 : 2500
0 50 100

Bearings are astronomic, and
to the meridian through the

- OIP denotes an old iron
- IP denotes an iron pin
- OPP denotes an old pipe
- PP denotes a pipe post
- OCIP denotes an old co
- OP CON denotes an old
- WT denotes witness.

BOOK

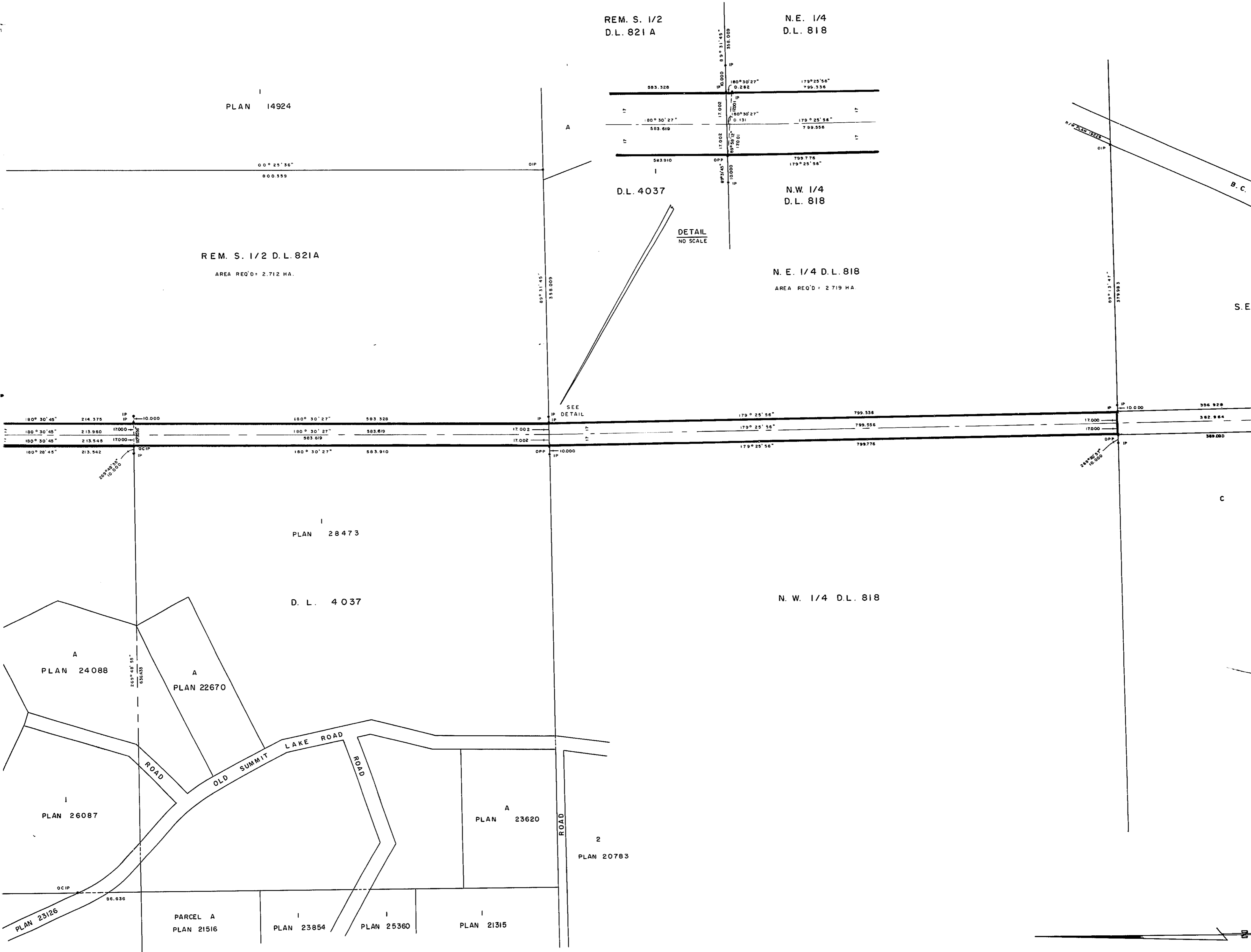
BOOK	DESCRIPT
LOT A, PLAN 1705, D.L.	
LOT 33, PLAN 10676, D.L.	
N.W. 1/4 D.L. 2432	
S. 1/2 OF N.E. 1/4 D.L.	
S.E. 1/4 D.L. 2432	
N.E. 1/4 D.L. 4027	
W. 1/2 OF N.W. 1/4 D.L.	
N.E. 1/4 OF N.W. 1/4 D.L.	
N.E. 1/4 D.L. 4030	
FRACTIONAL N. 1/2 D.L.	
N.W. 1/4 D.L. 815	
S.W. 1/4 D.L. 815	
N. 1/2 OF N. 1/2 D.L. 8	
S. 1/2 D.L. 821A	
N.E. 1/4 D.L. 818	



I, DONALD A. DUFFY, a E
Surveyor, of Prince George
certify that I was present
superintended the survey
and that the survey and
survey was completed on
1983.

D.A. Duffy

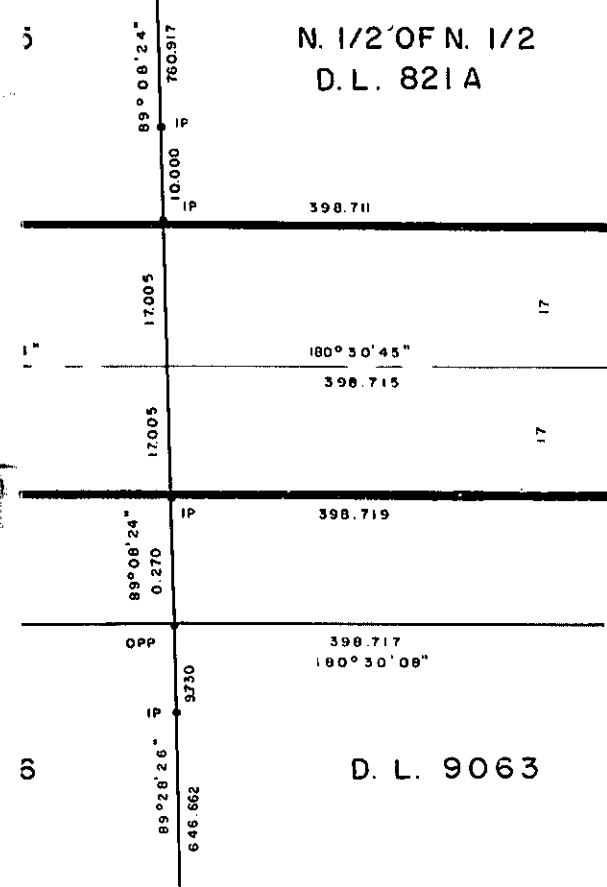




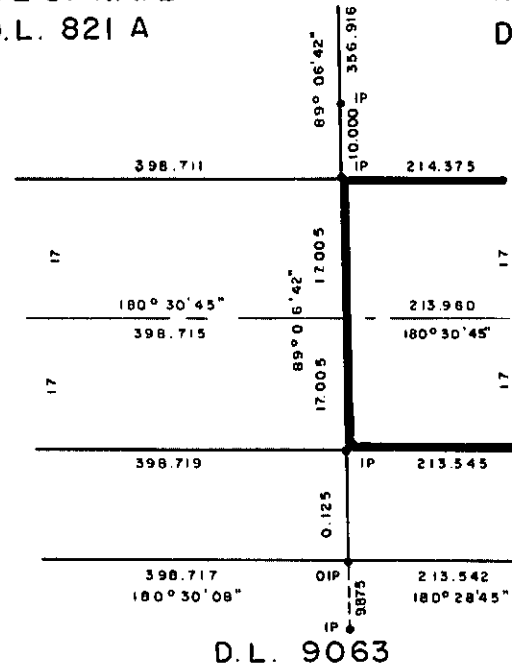
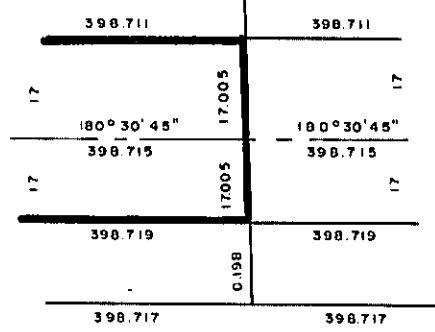
D.L. 816

S. 1/2 OF N. 1/2
D.L. 821 A

REM. S. 1/2
D.L. 821 A



N. 1/2 OF N. 1/2
D.L. 821 A



D.L. 9063

DETAIL
NO SCALE

PLAN 14924

S. 1/2 OF N. 1/2
D.L. 821 A

DETAIL
NO SCALE

N. 1/2 OF N. 1/2
D.L. 821 A

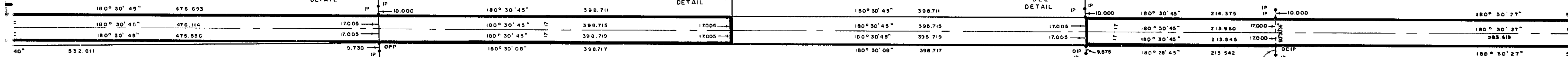
AREA REQ'D = 1.356 HA

REM. S. 1/2 D.L. 821 A

AREA REQ'D = 2.712 HA

1/4 D.L. 815

REQ'D = 2.354 HA



PLAN 28473

D.L. 4036

D.L. 9063

D.L. 4037

PLAN 24088

PLAN 22670

PLAN 26087

604.191
179° 55' 07\"/>

201.412

718.947
179° 55' 07\"/>

86.656

S. E. 1/4 D.L. 4030

PLAN 26717

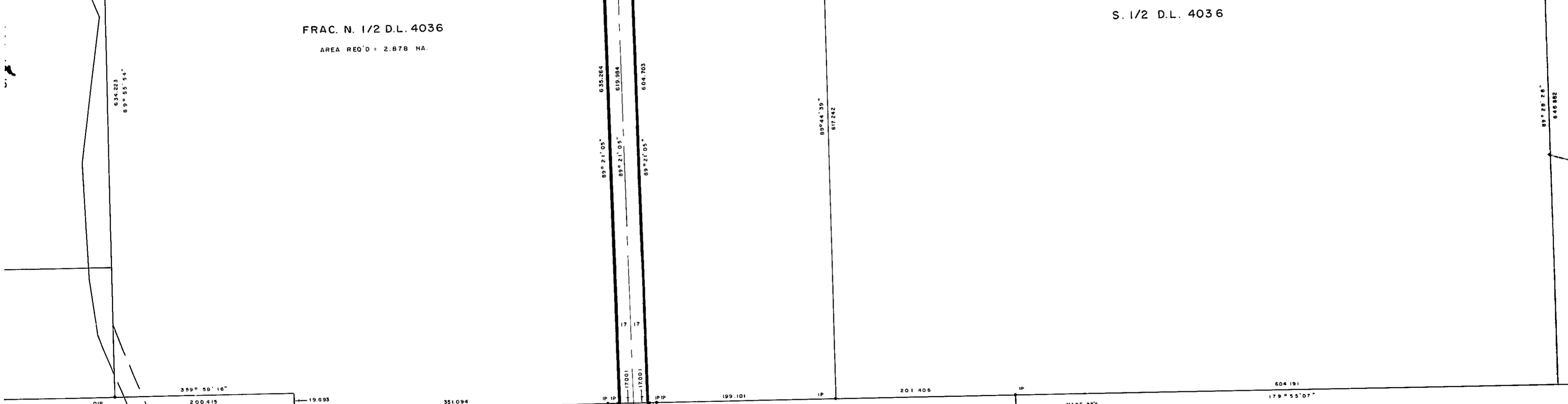
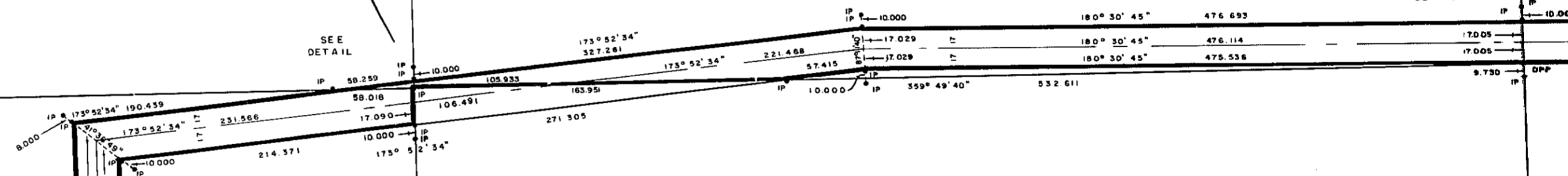
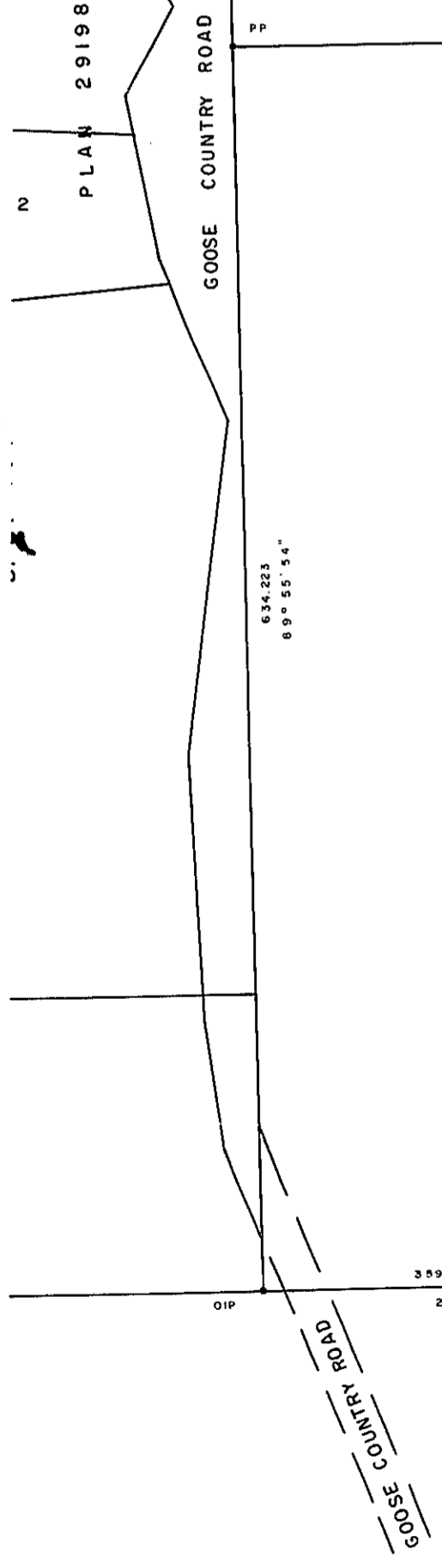
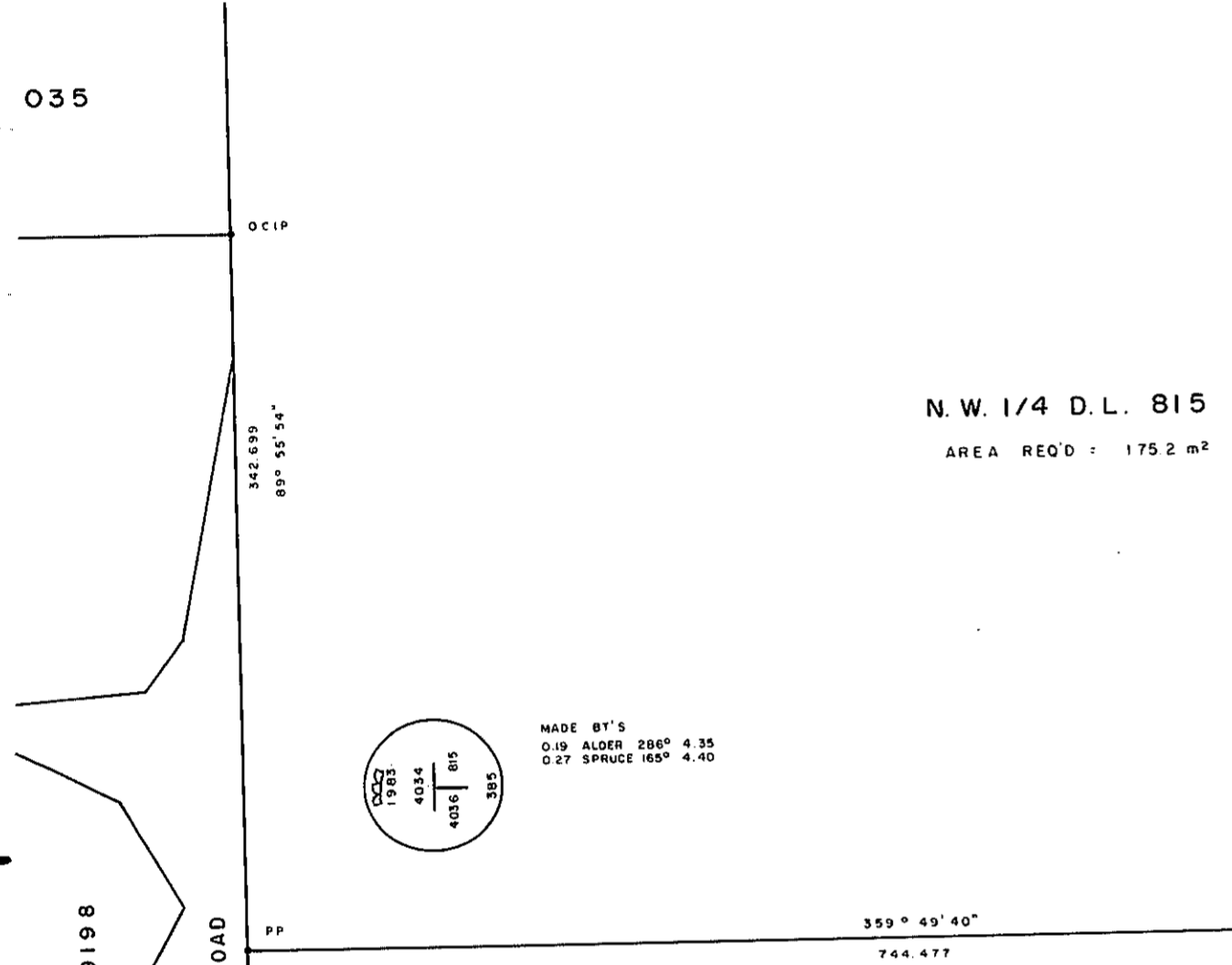
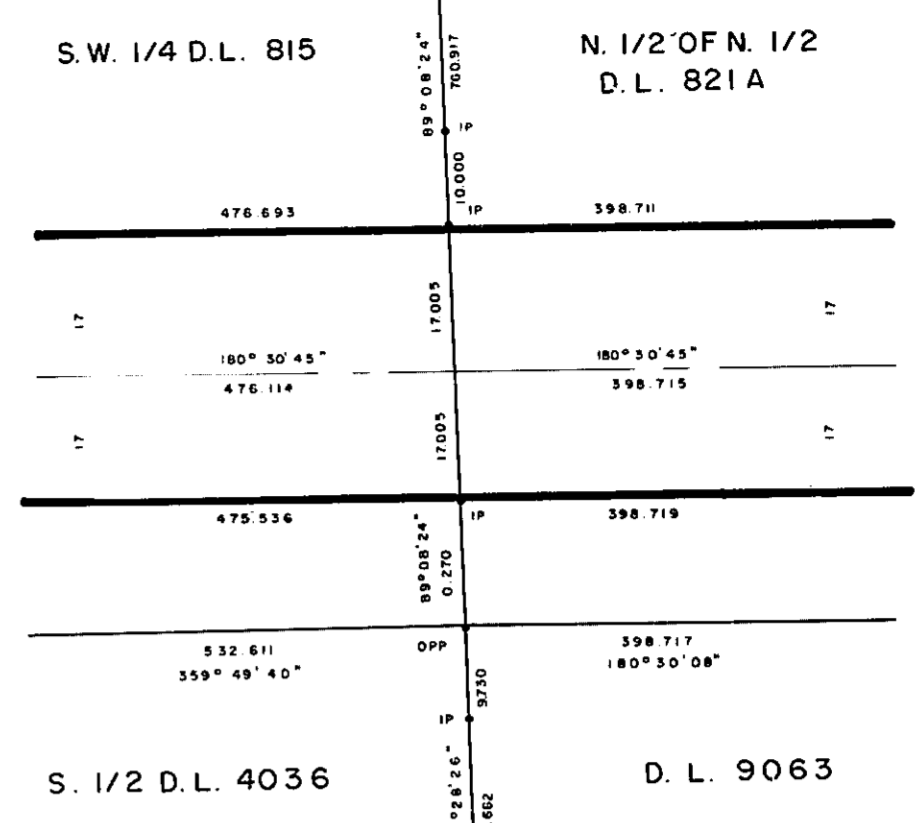
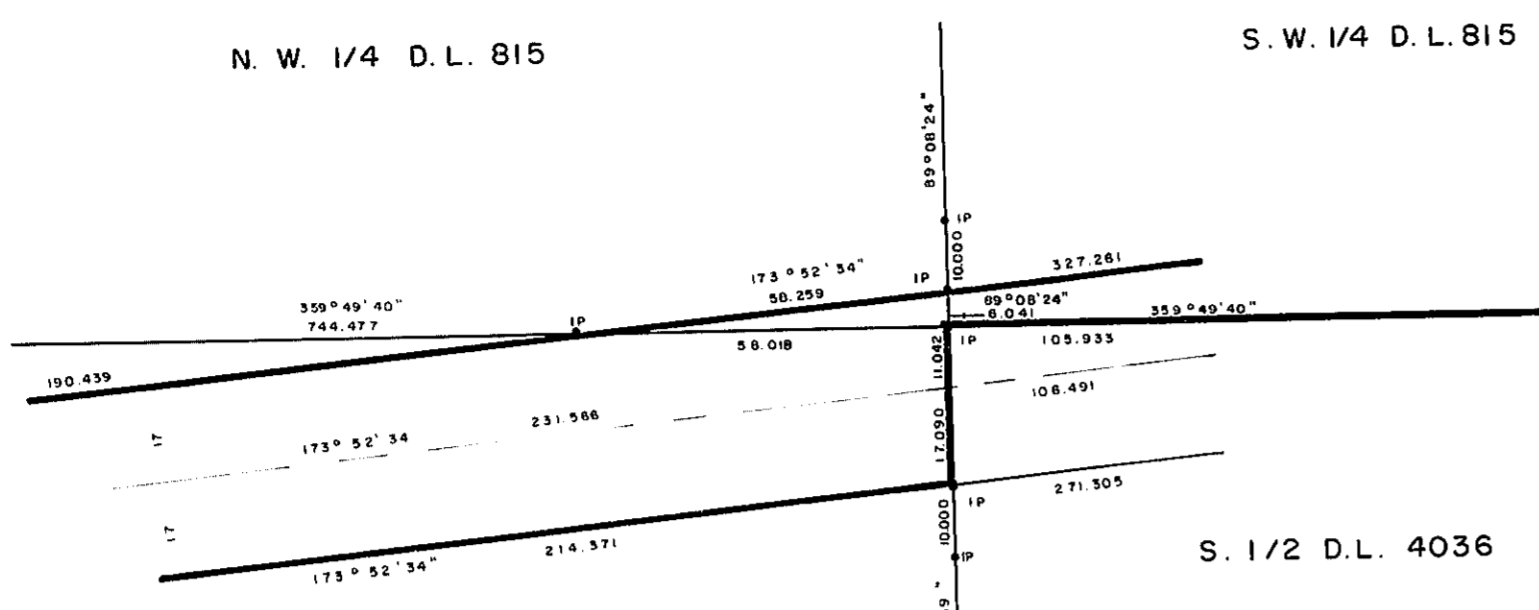
D.L. 4029

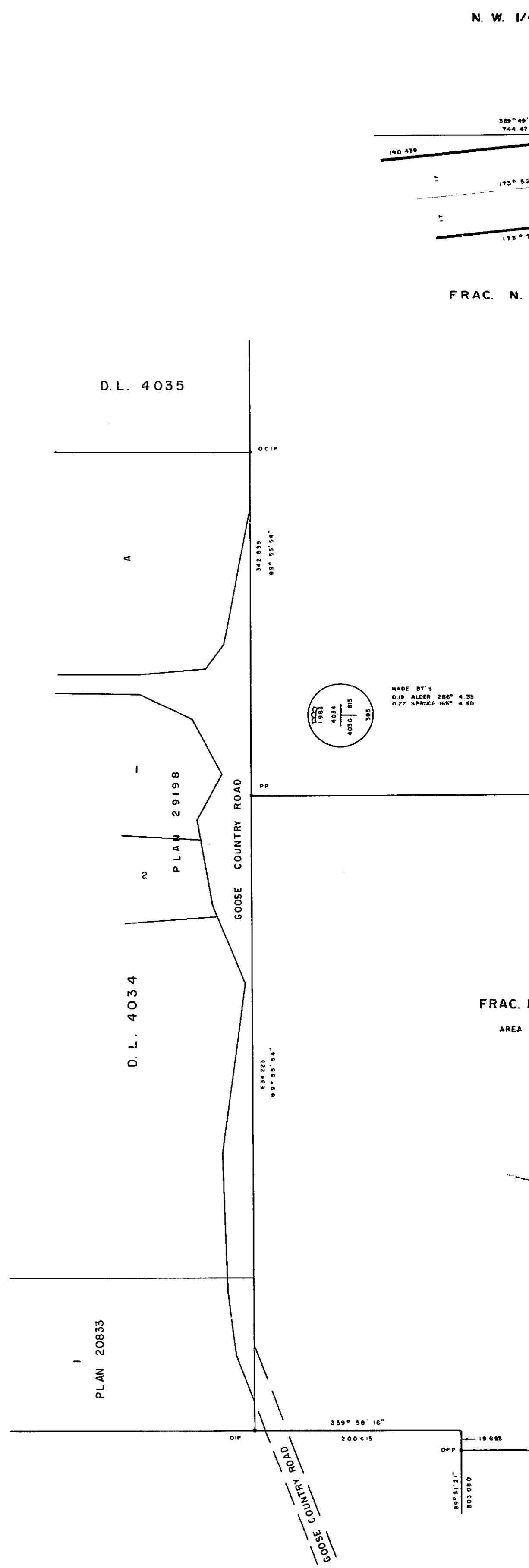
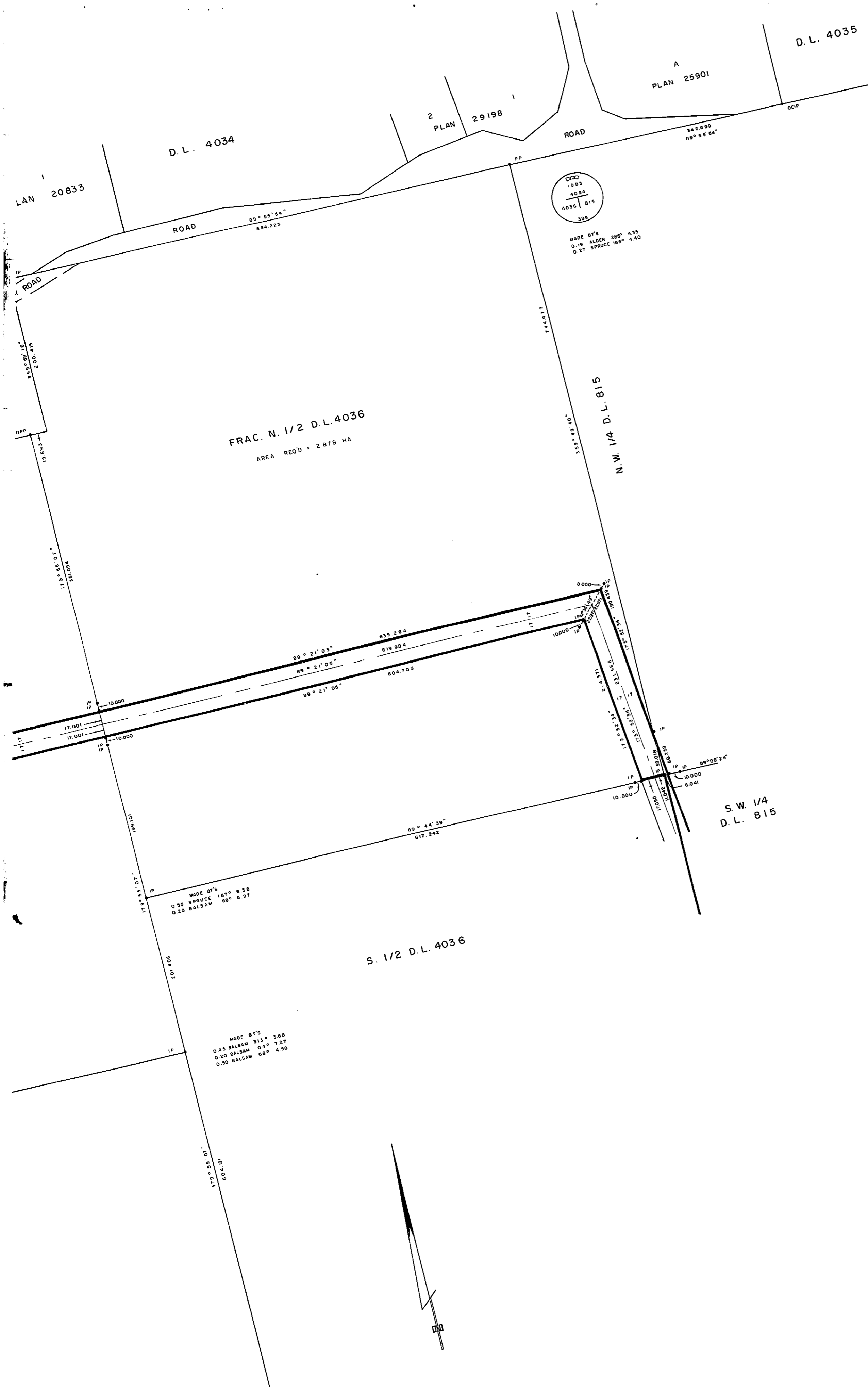
N. E. 1/4 D.L. 4029

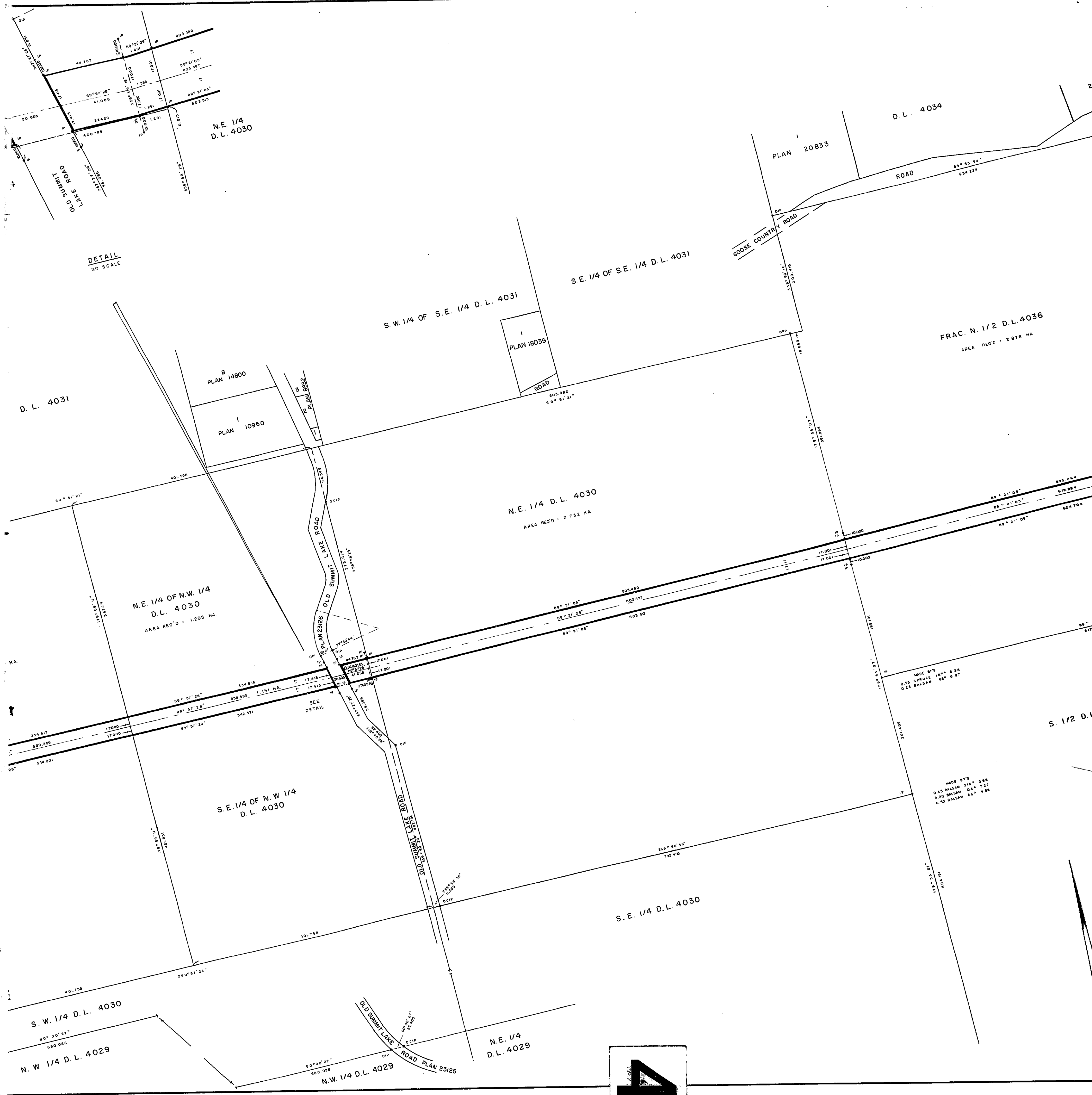
PARCEL A
PLAN 21516

PLAN 23854









N.E. 1/4
D.L. 4030

D.L. 4034

PLAN 20833

GOOSE COUNTRY ROAD

S.E. 1/4 OF S.E. 1/4 D.L. 4031

FRAC. N. 1/2 D.L. 4036
AREA REQ'D : 2.878 HA

S.W. 1/4 OF S.E. 1/4 D.L. 4031

PLAN 18039

D.L. 4031

PLAN 14800

PLAN 10950

N.E. 1/4 D.L. 4030
AREA REQ'D : 2.732 HA

N.E. 1/4 OF N.W. 1/4
D.L. 4030
AREA REQ'D : 1.295 HA.

S.E. 1/4 OF N.W. 1/4
D.L. 4030

S.E. 1/4 D.L. 4030

S.W. 1/4 D.L. 4030

N.W. 1/4 D.L. 4029

N.E. 1/4
D.L. 4029

N.W. 1/4 D.L. 4029

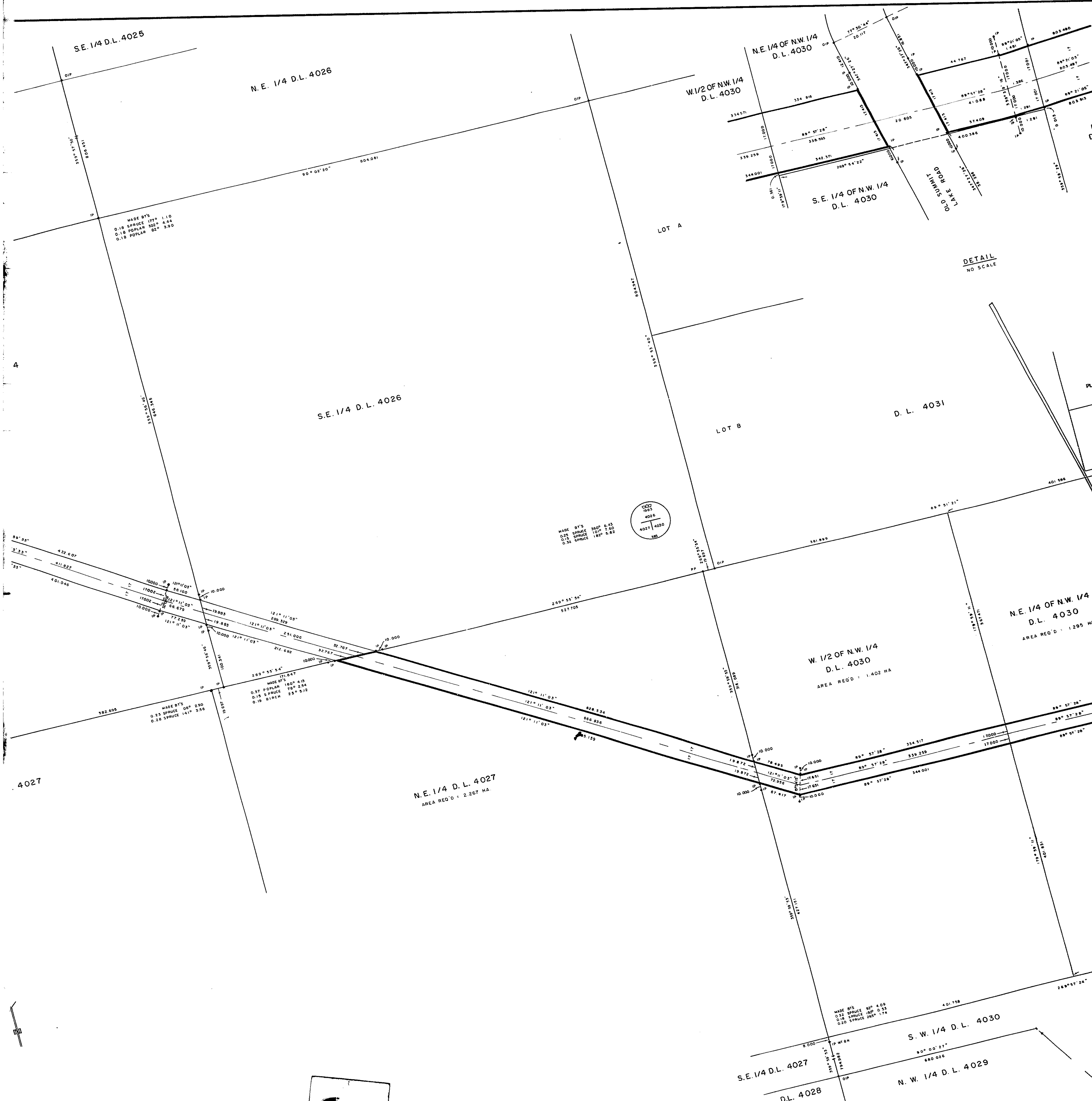


DETAIL
NO SCALE

SEE
DETAIL

MADE BY
0.55 SPRUCE 1674 8.58
0.25 BALSAM 887 6.97

MADE BY
0.45 BALSAM 312 3.68
0.20 BALSAM 047 7.27
0.50 BALSAM 664 4.28



S. 1/2 OF N.E. 1/4
D.L. 2432
AREA REG'D = 1.951 HA.

S.E. 1/4 D.L. 2432
AREA REG'D = 0.9513 HA.

N.W. 1/4 D.L. 4026

S.W. 1/4 D.L. 4025

SE. 1/4 D.L. 4025

N.E. 1/4 D.L. 4026

E. 1/2 OF S.W. 1/4
D.L. 4026

W. 1/2 OF S.W. 1/4
D.L. 4026

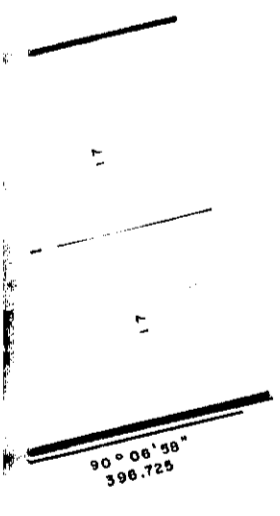
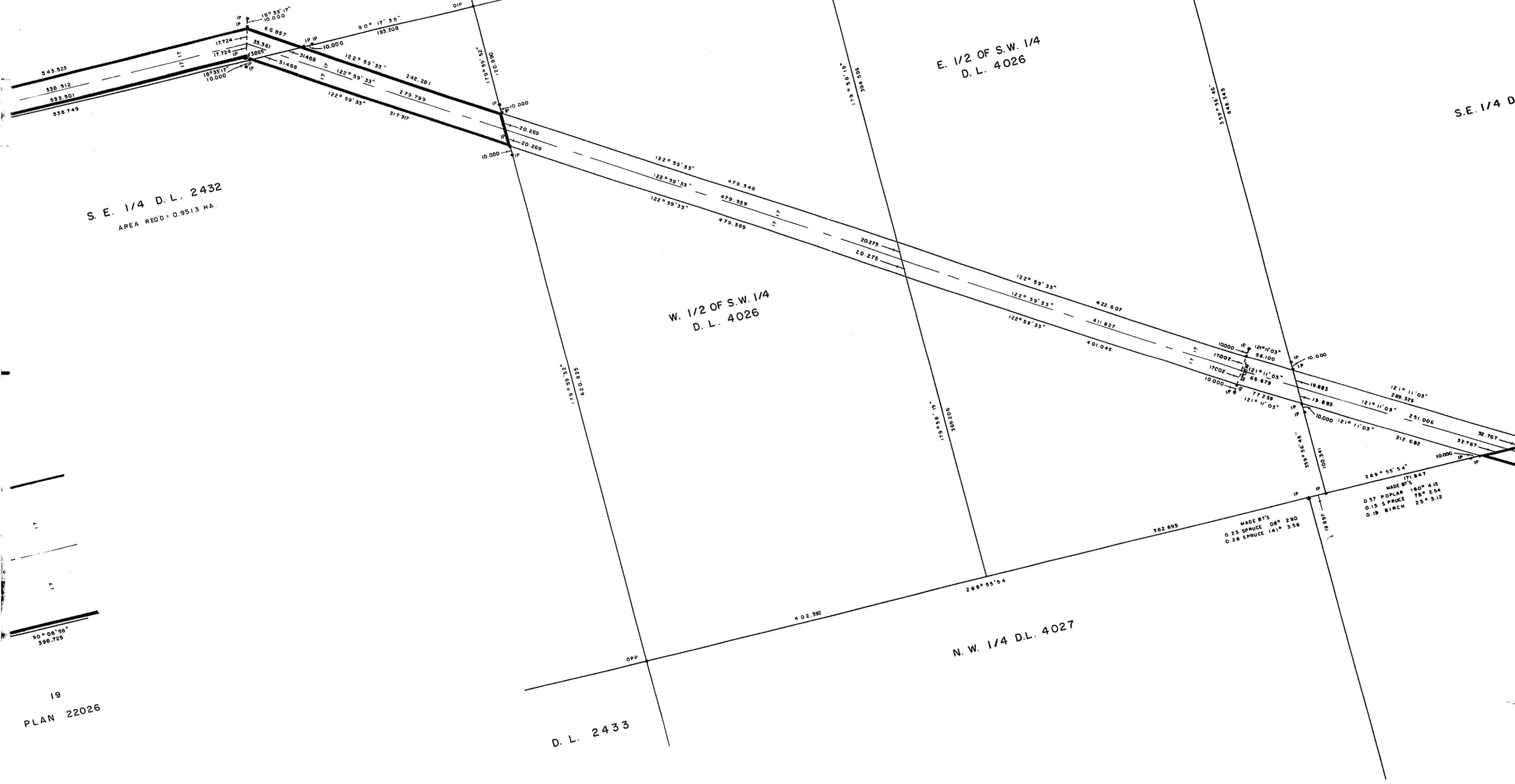
N.W. 1/4 D.L. 4027

D.L. 2433

MADE BY
D.18 SPRUCE 175' 1.10
D.18 POPLAR 302' 4.44
D.18 POPLAR 82' 3.90

MADE BY
D.23 SPRUCE 08' 2.90
D.28 SPRUCE 141' 3.58

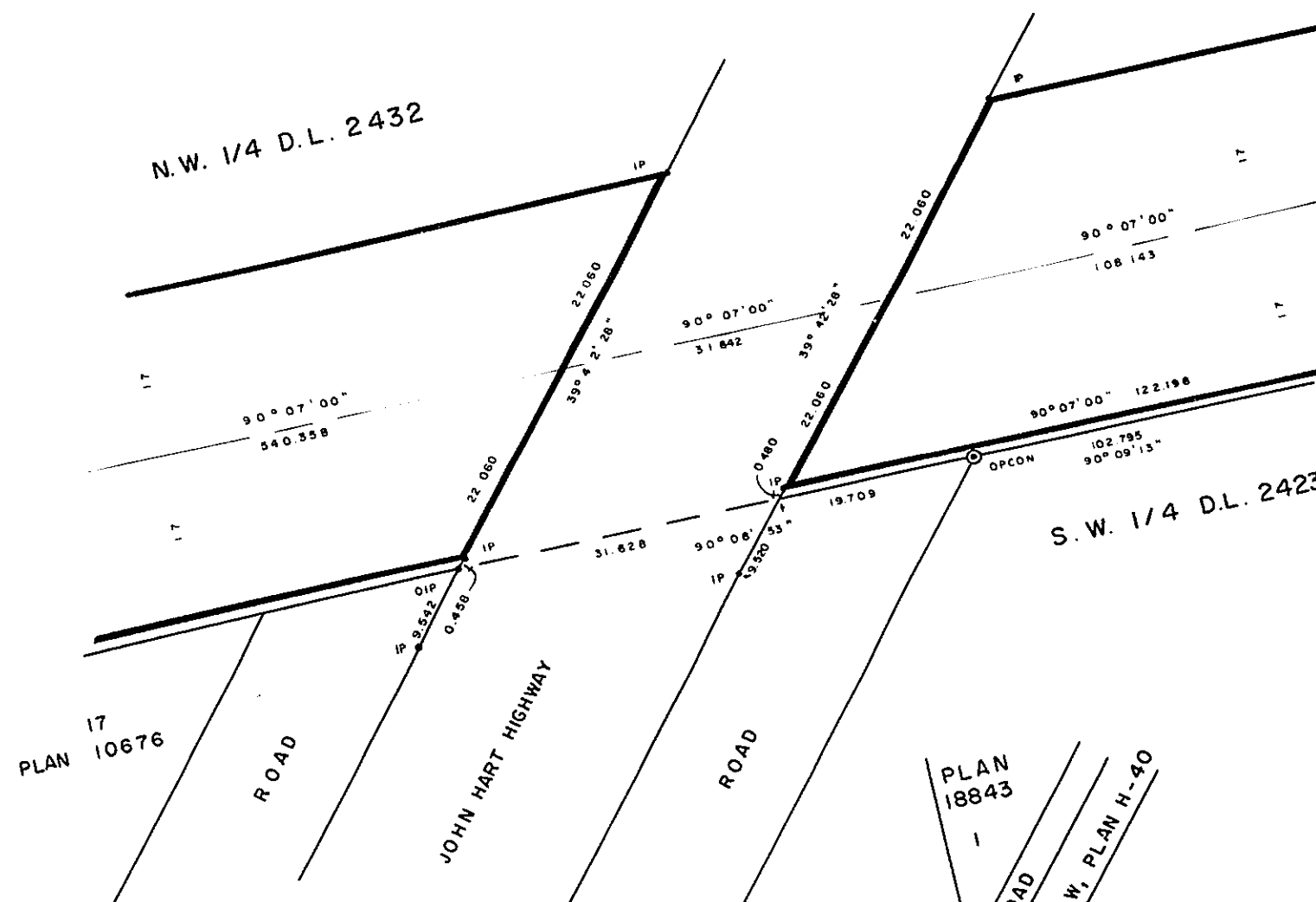
MADE BY
D.37 POPLAR 180' 4.18
D.15 SPRUCE 187' 2.54
D.18 BIRCH 25' 3.12



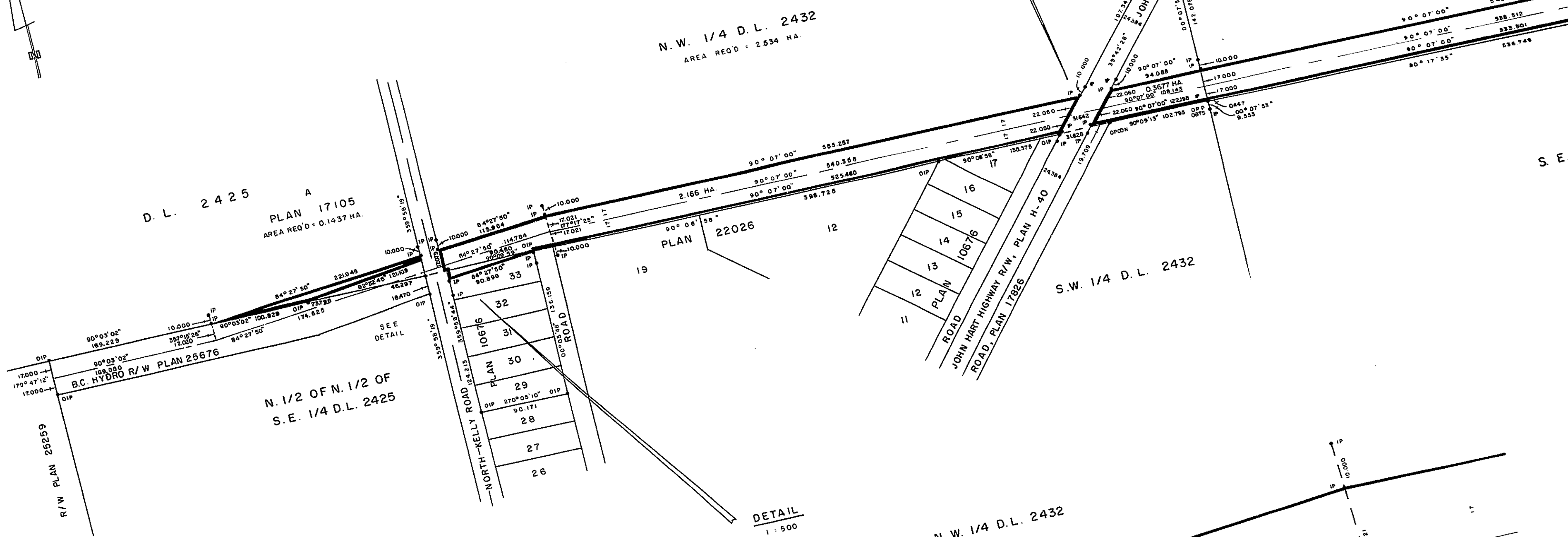
19
PLAN 22026



26-226-FF



S. 1/2 OF N.E. D.L. 2432
AREA REQ'D - 1.951



DETAIL
1:500

