

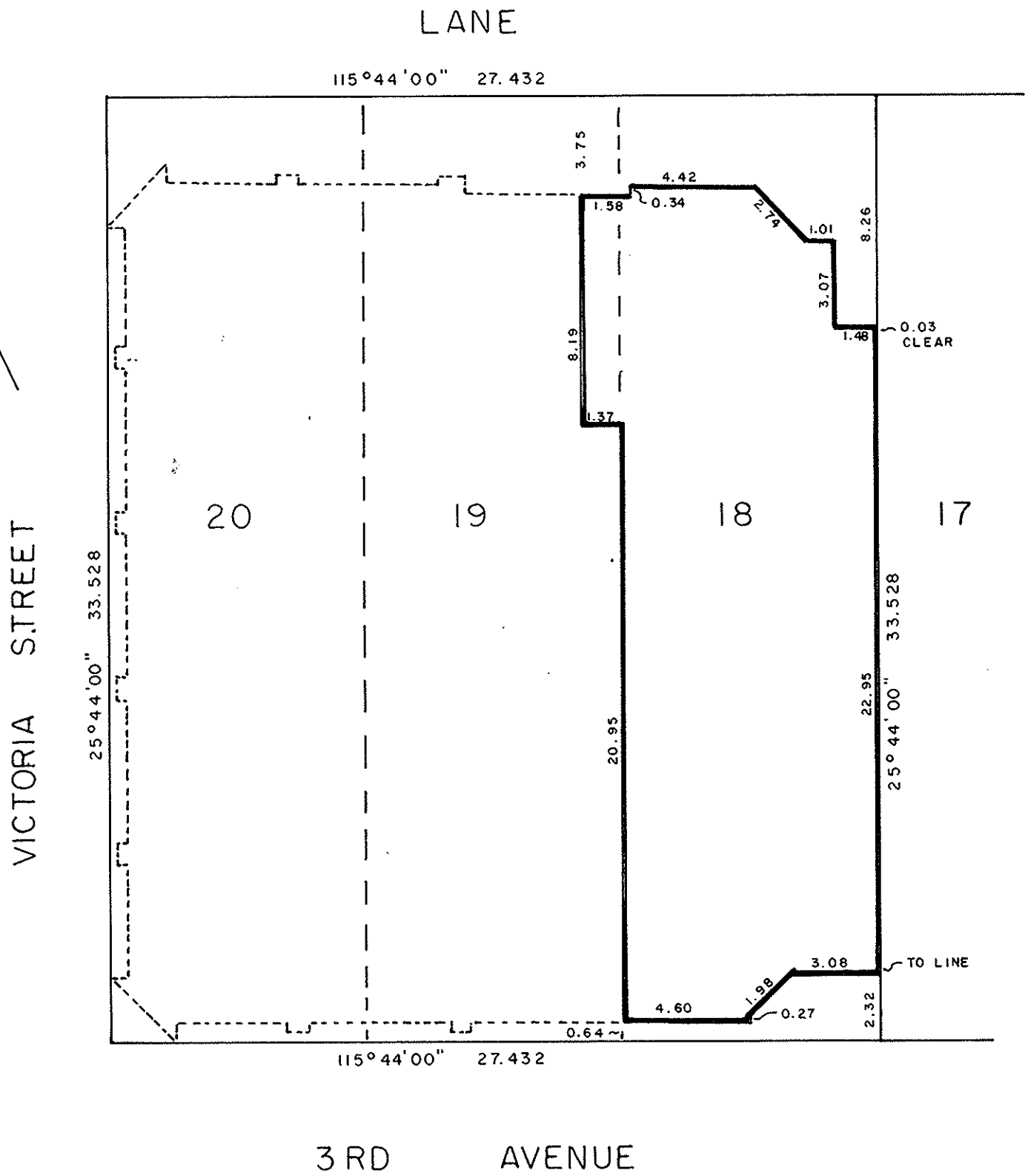
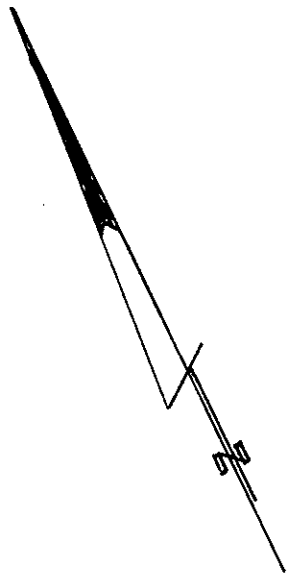
EXPLANATORY PLAN OF  
 PART OF THE GROUND FLOOR OF  
 BUILDING LOCATED ON  
 LOTS 18, 19 & 20, BLOCK 46, PLAN 1268  
 DISTRICT LOT 343  
 CARIBOO DISTRICT - BRITISH COLUMBIA  
 SCALE: 1:200

PLAN No 29821  
 Deposited in the Land Title  
 Office at Prince George, B.C. this  
21 day of Feb., 1984



NOTE: Bearings are astronomic, derived  
 from Plan 1268.

Acting J. Carlson  
 Registrar



CERTIFIED CORRECT  
 This 13th Day of December, 1983

*[Signature]*  
 D.A. DUFFY, B.C.L.S.

W.D. USHER & ASSOCIATES  
 LAND SURVEYORS  
 PRINCE GEORGE, B.C.  
 V4A 1A8

This plan lies within the Fraser-Fort George  
 Regional District.