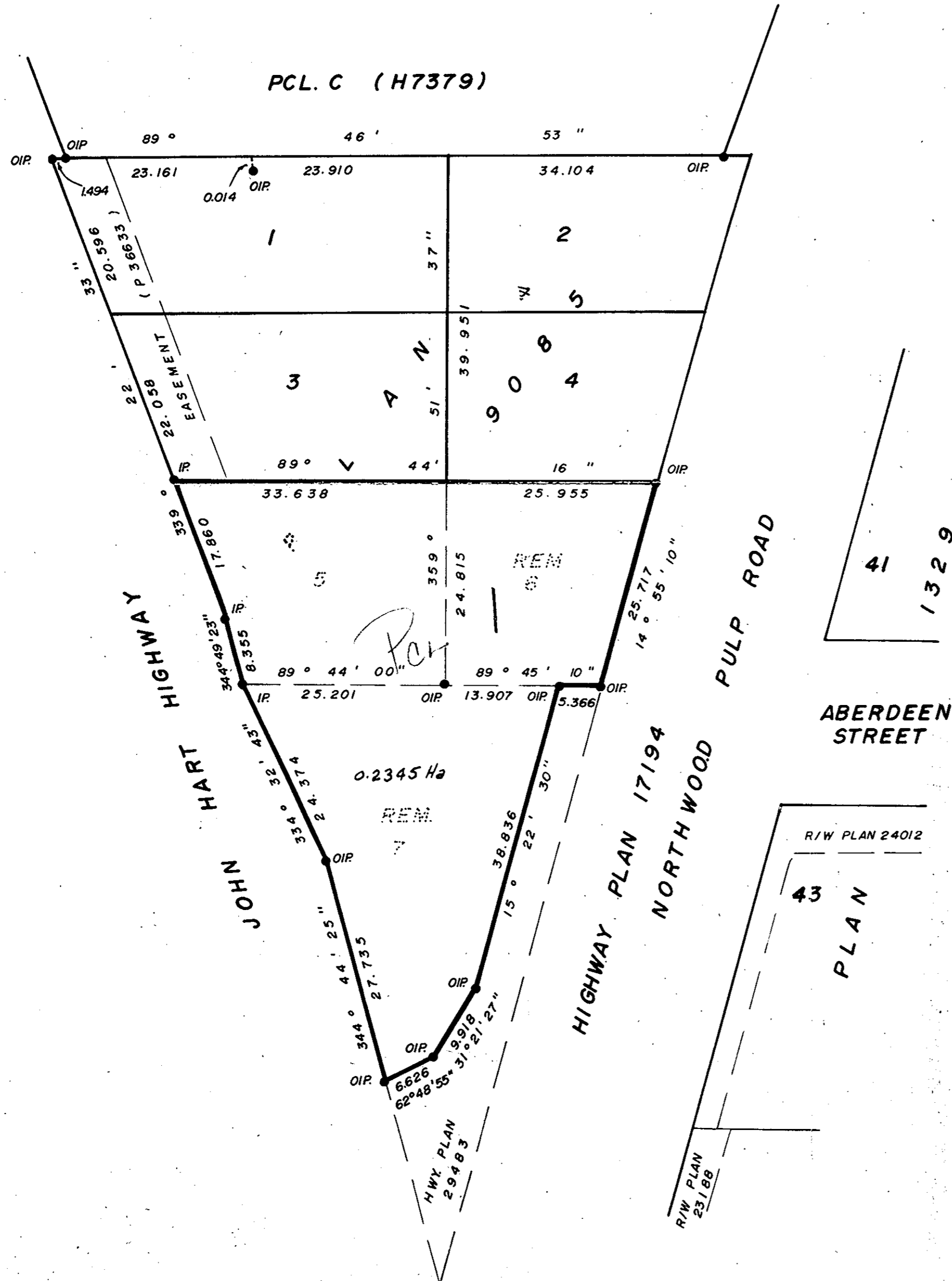


FLATTEN HP

PLAN NO. 29800

DEPOSITED IN THE LAND TITLE OFFICE AT PRINCE GEORGE
THIS 16th DAY OF FEBRUARY 1984.

J. CARLSON
Act. REGISTRAR



REFERENCE PLAN OF CONSOLIDATION
OF LOT 5 and REMAINDER OF LOTS 6
and 7, ALL OF PLAN 9085,
DISTRICT LOT 4377, CARIBOO DISTRICT.
SCALE: 1:500

Distances are in metres.



BEARINGS ARE ASTRONOMIC DERIVED FROM
NORTH BDY. LOTS 1 AND 2 = 89° 46' 53" AS
SHOWN ON PLAN 29483.

● I.P. STANDARD IRON POST.
○ DENOTES "OLD"

I, GORDON KILBRIDE, A BRITISH COLUMBIA LAND
SURVEYOR OF PRINCE GEORGE IN BRITISH COLUMBIA
CERTIFY THAT I WAS PRESENT AT AND PERSONALLY
SUPERINTENDED THE SURVEY REPRESENTED BY THIS
PLAN AND THAT THE SURVEY AND PLAN ARE CORRECT.
THE SURVEY WAS COMPLETED ON THE 21 DAY OF
DECEMBER, 1983.

Gordon Kilbride
GORDON KILBRIDE B.C.L.S.

THIS PLAN LIES WITHIN THE FRASER FORT GEORGE
REGIONAL DISTRICT.

McWILLIAM, WHYTE, GOBLE, & ASSOCIATES,
B.C. LAND SURVEYORS,
PRINCE GEORGE - KAMLOOPS - SMITHERS - SALMON ARM.

REF. NO. 83131 DL 4377.