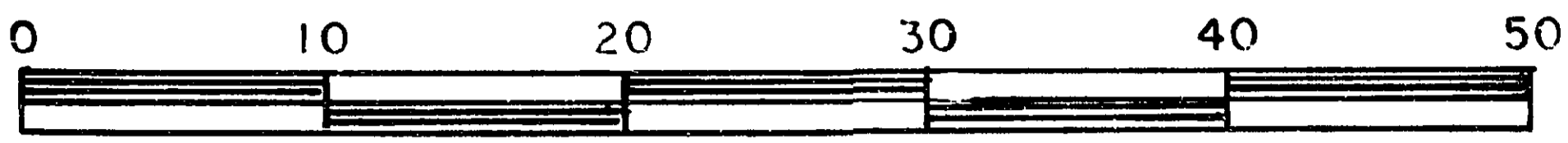


26-FF-226

REFERENCE PLAN OF EASEMENT THROUGH
LOT A, PLAN 29753
DISTRICT LOT 2423
CARIBOO DISTRICT — BRITISH COLUMBIA
SCALE: 1 : 500



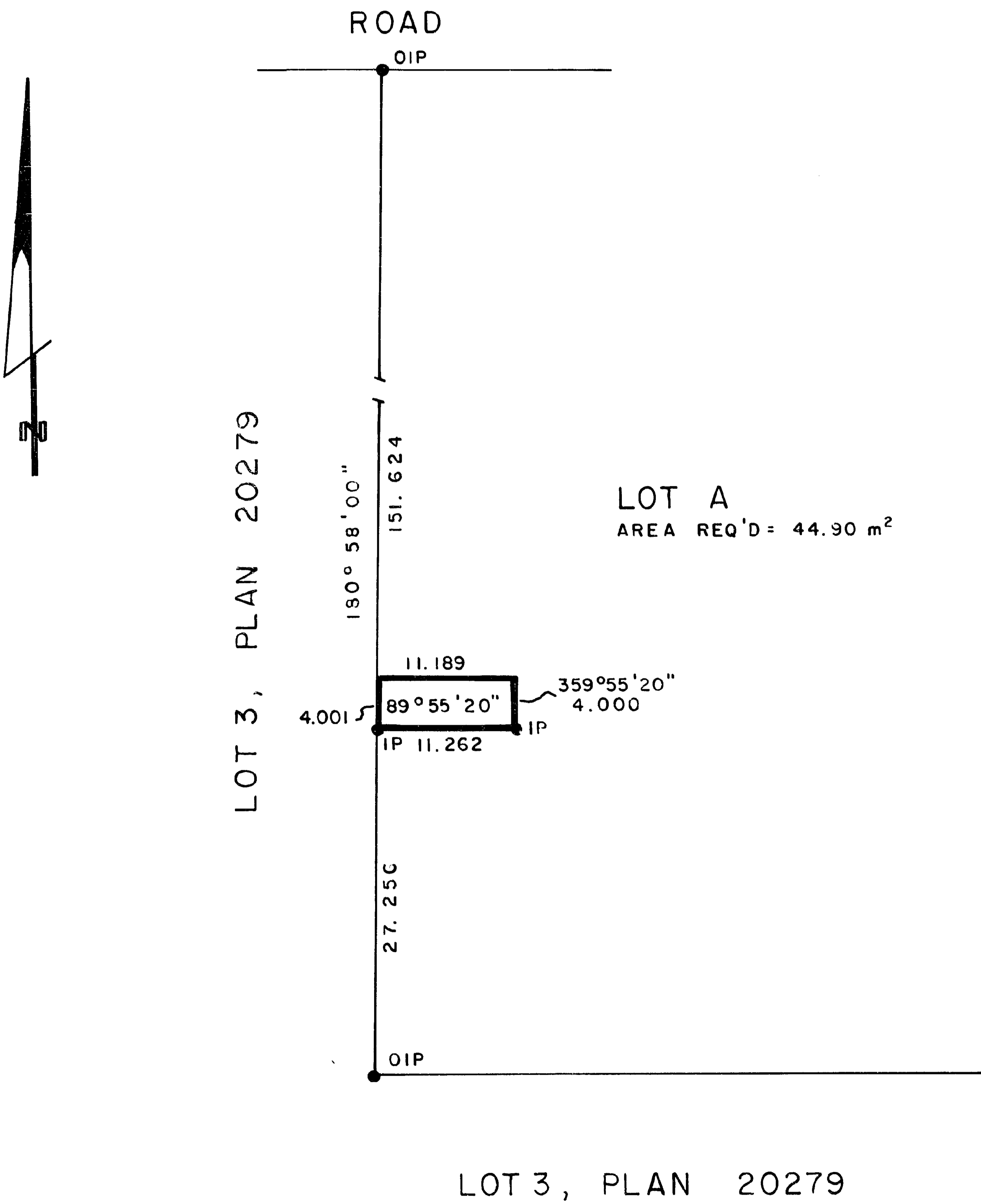
PLAN No **29754**

Deposited in the Land Title
Office at Prince George, B.C. this
19th day of Jan., 1984.

NOTE: Bearings are astronomic, derived from the
west boundary of Lot A, Plan 29753

LEGEND: • OIP denotes an old iron pin found.
• IP denotes an iron pin placed.

acting J. Carlson per fy
Registrar



I, DONALD A. DUFFY, a British Columbia Land
Surveyor, of Prince George, in British Columbia,
certify that I was present at and did personally
superintend the survey represented by this plan,
and that the survey and plan are correct. The
survey was completed on the 23 day of DEC.,
1983.

This plan lies within the Fraser- Fort George
Regional District.

W. D. USHER & ASSOCIATES
LAND SURVEYORS
PRINCE GEORGE — B.C.
14013A NF 50