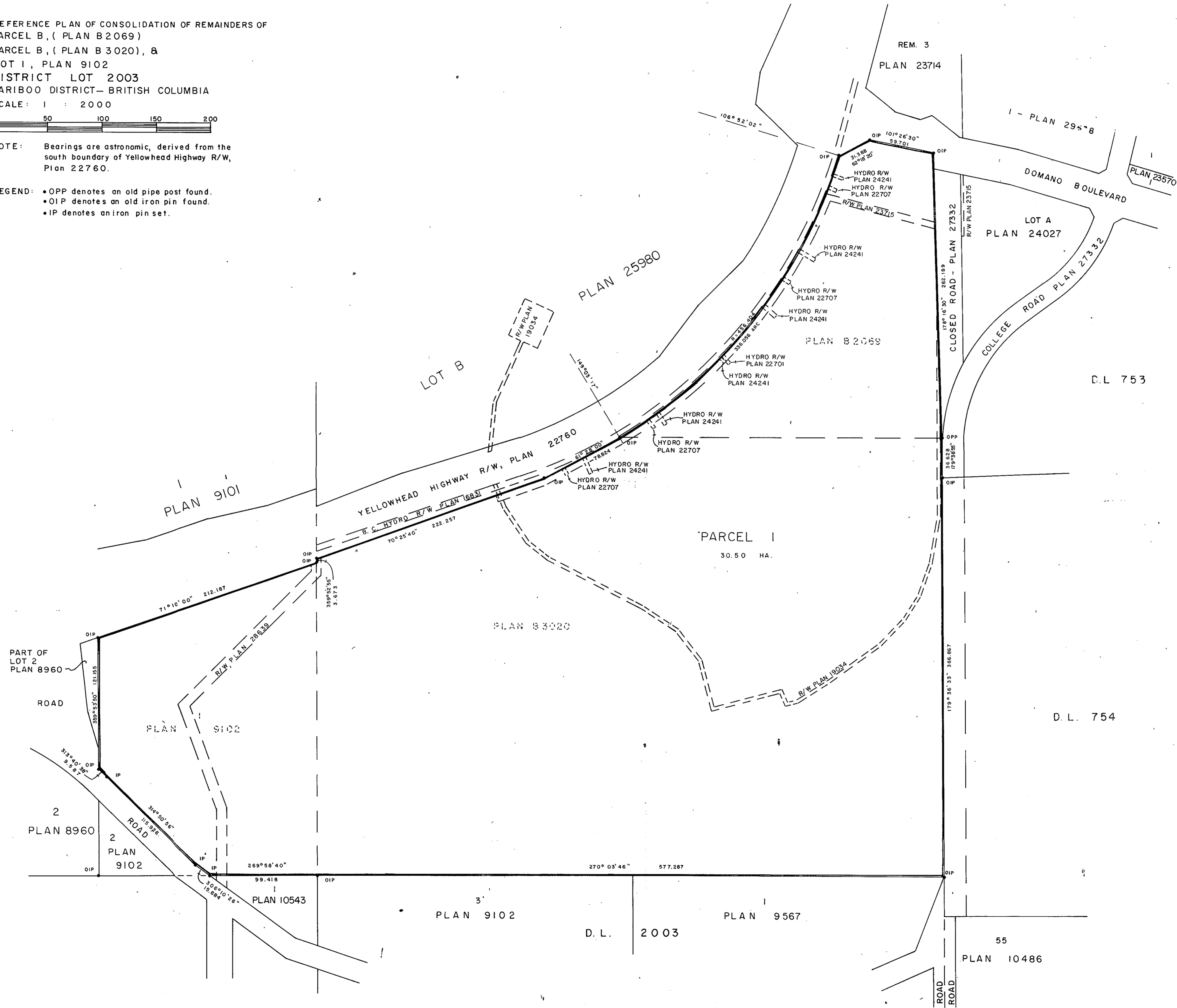
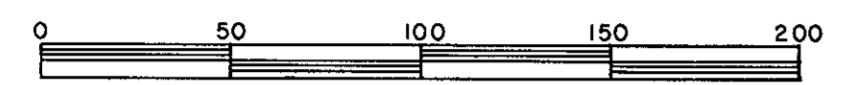


PLAN No 29709
 Deposited in the Land Title
 Office at Prince George, B.C. this
20th day of Dec, 1983
 Registrar JC

REFERENCE PLAN OF CONSOLIDATION OF REMAINDERS OF
 PARCEL B, (PLAN B 2069)
 PARCEL B, (PLAN B 3020), &
 LOT 1, PLAN 9102
 DISTRICT LOT 2003
 CARIBOO DISTRICT— BRITISH COLUMBIA
 SCALE: 1 : 2000

NOTE: Bearings are astronomic, derived from the
 south boundary of Yellowhead Highway R/W,
 Plan 22760.

LEGEND: •OPP denotes an old pipe post found.
 •OIP denotes an old iron pin found.
 •IP denotes an iron pin set.



I, DONALD A. DUFFY, a British Columbia Land
 Surveyor, of Prince George, in British Columbia,
 certify that I was present at and personally
 superintended the survey represented by this plan,
 and that the survey and plan are correct. The
 survey was completed on the 9th day of November,
 1983.

Duffy

 Land Surveyor

ROMAN CATHOLIC EPISCOPAL
 CORPORATION OF PRINCE RUPERT
F. O'Grady
 Authorised Signatory

 Authorised Signatory

This plan lies within the Fraser-Fort George
 Regional District.