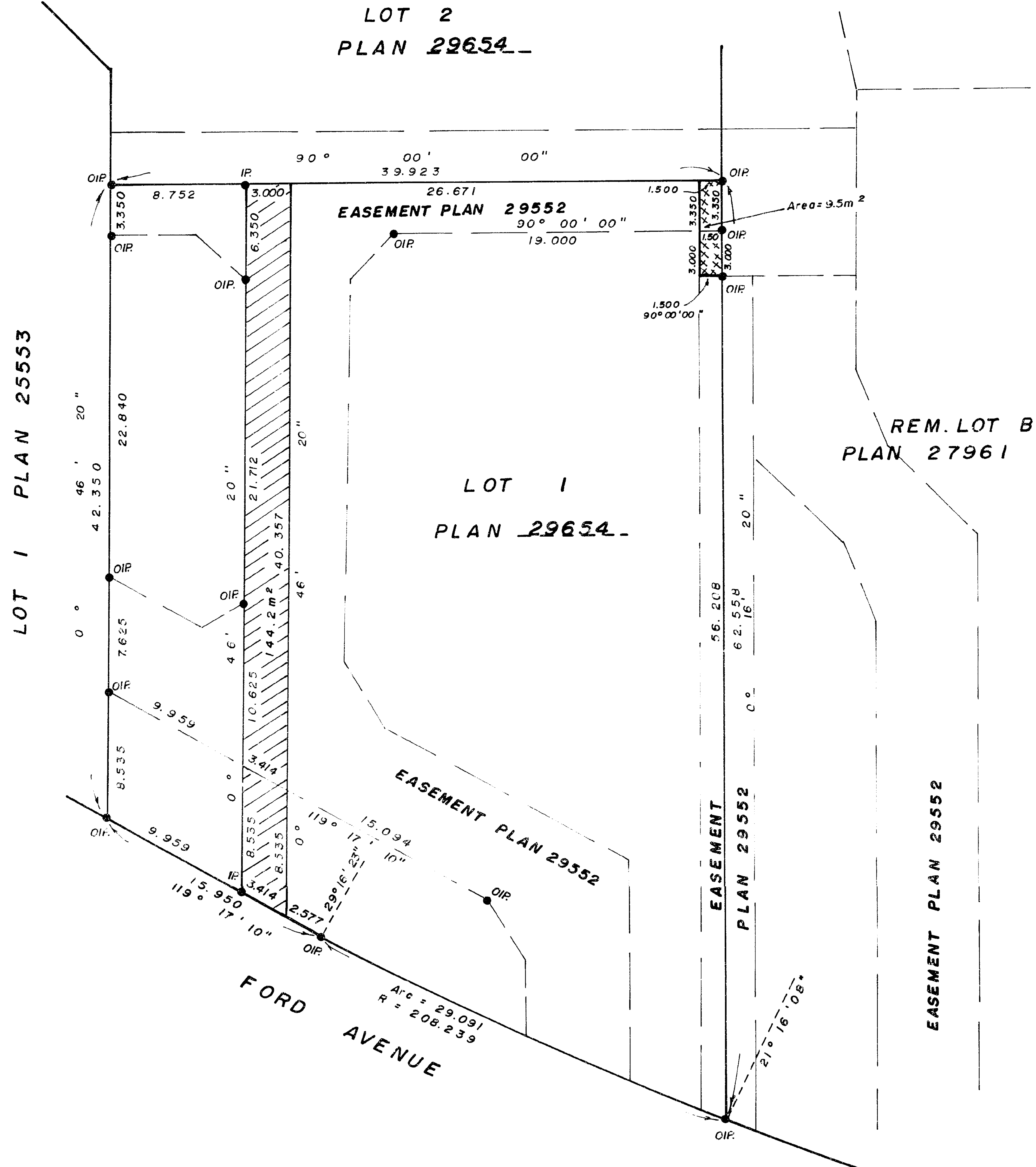


26-FF-226

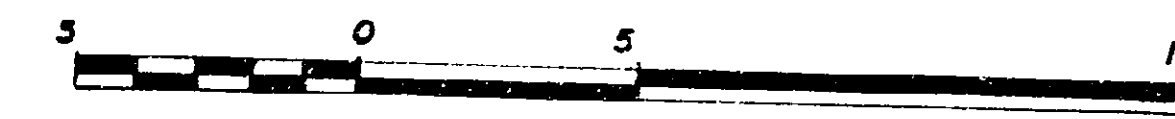
PLAN No. 29704
 DEPOSITED IN THE LAND TITLE OFFICE AT PRINCE
 GEORGE THIS 16th DAY OF Dec. 1983.

"J. Carlson" *[Signature]*
 Acting REGISTRAR



REFERENCE PLAN OF EASEMENTS
 IN LOT 1, PLAN 29654--
 DISTRICT LOT 913, CARIBOO DISTRICT.

SCALE: 1:250 (DISTANCES ARE IN METRES)



BEARINGS ARE ASTRONOMIC DERIVED FROM
 PLAN 27361.

● I.P. STANDARD IRON POST.
 ○ DENOTES "OLD"

I, V. BARTELL, A BRITISH COLUMBIA LAND SURVEYOR
 OF PRINCE GEORGE IN BRITISH COLUMBIA CERTIFY
 THAT I WAS PRESENT AT AND PERSONALLY
 SUPERINTENDED THE SURVEY REPRESENTED BY THIS
 PLAN AND THAT THE SURVEY AND PLAN ARE
 CORRECT. THE SURVEY WAS COMPLETED ON THE
 14 DAY OF OCTOBER, 1983.

[Signature]
 V. BARTELL, B.C.L.S.

BOOK OF REFERENCE	
DESCRIPTION	AREA
Utility Easement (cross hatched) in Lot 1, Plan 29654--	9.5m ²
Utility Easement (hatched) in Lot 1, Plan 29654--	144.2m ²

THIS PLAN LIES WITHIN THE FRASER FORT GEORGE
 REGIONAL DISTRICT.

McWILLIAM, WHYTE, GOBLE, & ASSOCIATES,
 B.C. LAND SURVEYORS,
 PRINCE GEORGE-KAMLOOPS-SMITHERS-SALMON ARM
 REF. NO. 83097 (DL.913)