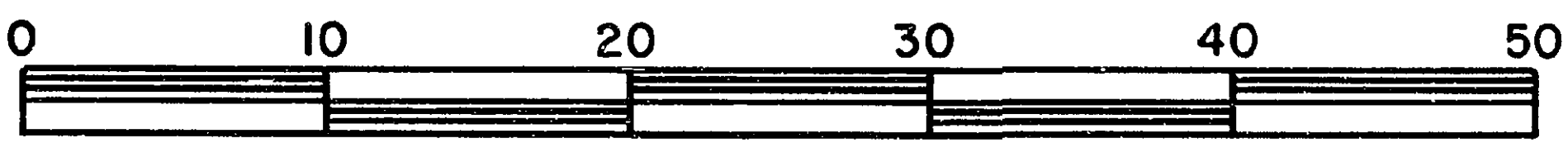


26-FF-226

INLAND NATURAL GAS COMPANY
 REFERENCE PLAN OF STATUTORY RIGHT-OF-WAY
 LOT 1, PLAN 24779
 DISTRICT LOT 753
 CARIBOO DISTRICT - BRITISH COLUMBIA

SCALE: 1 : 500



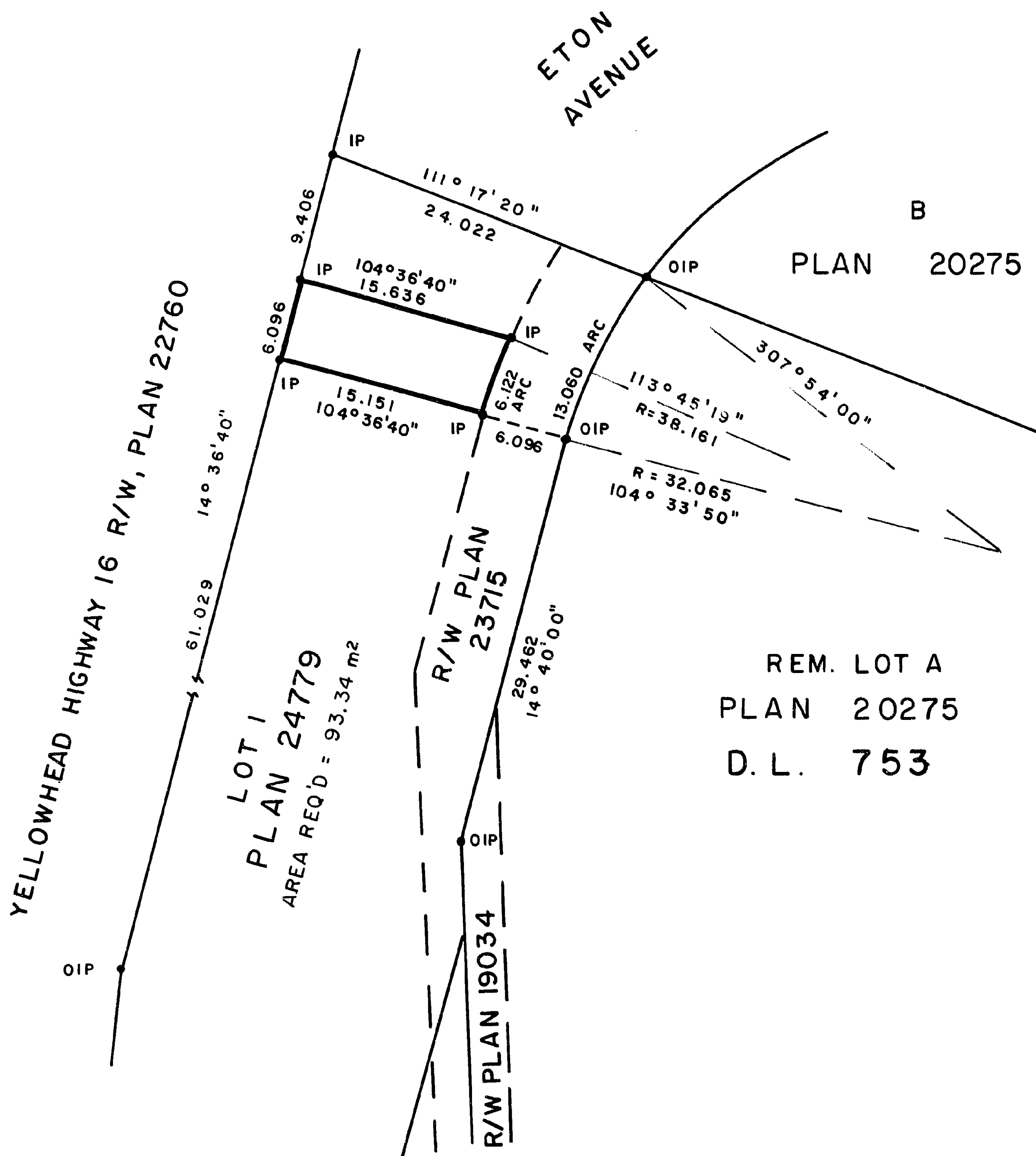
NOTE: Bearings are astronomic, derived from the east boundary of Lot 1, Plan 24779.

LEGEND: • OIP denotes an old iron pin found.
 • IP denotes an iron pin set.

PLAN N^o 29693

Deposited in the Land Title Office at Prince George, B.C. this 9th day of Dec, 1983.

acting Registrar *J. Carleton*



I, DONALD A. DUFFY, a British Columbia Land Surveyor, of Prince George, in British Columbia, certify that I was present at and did personally superintend the survey represented by this plan, and that the survey and plan are correct. The survey was completed on the 8th day of Nov, 1983.

This plan lies within the Fraser- Fort George Regional District.

W. D. USHER & ASSOCIATES
 LAND SURVEYORS
 PRINCE GEORGE — B.C.
 PD 75 14155