

26-FF-226

REFERENCE PLAN OF EASEMENTS THROUGH
LOT I, PLAN 25740 &
LOT A, PLAN 28868
DISTRICT LOT 4031
CARIBOO DISTRICT - BRITISH COLUMBIA
SCALE: 1 : 1000



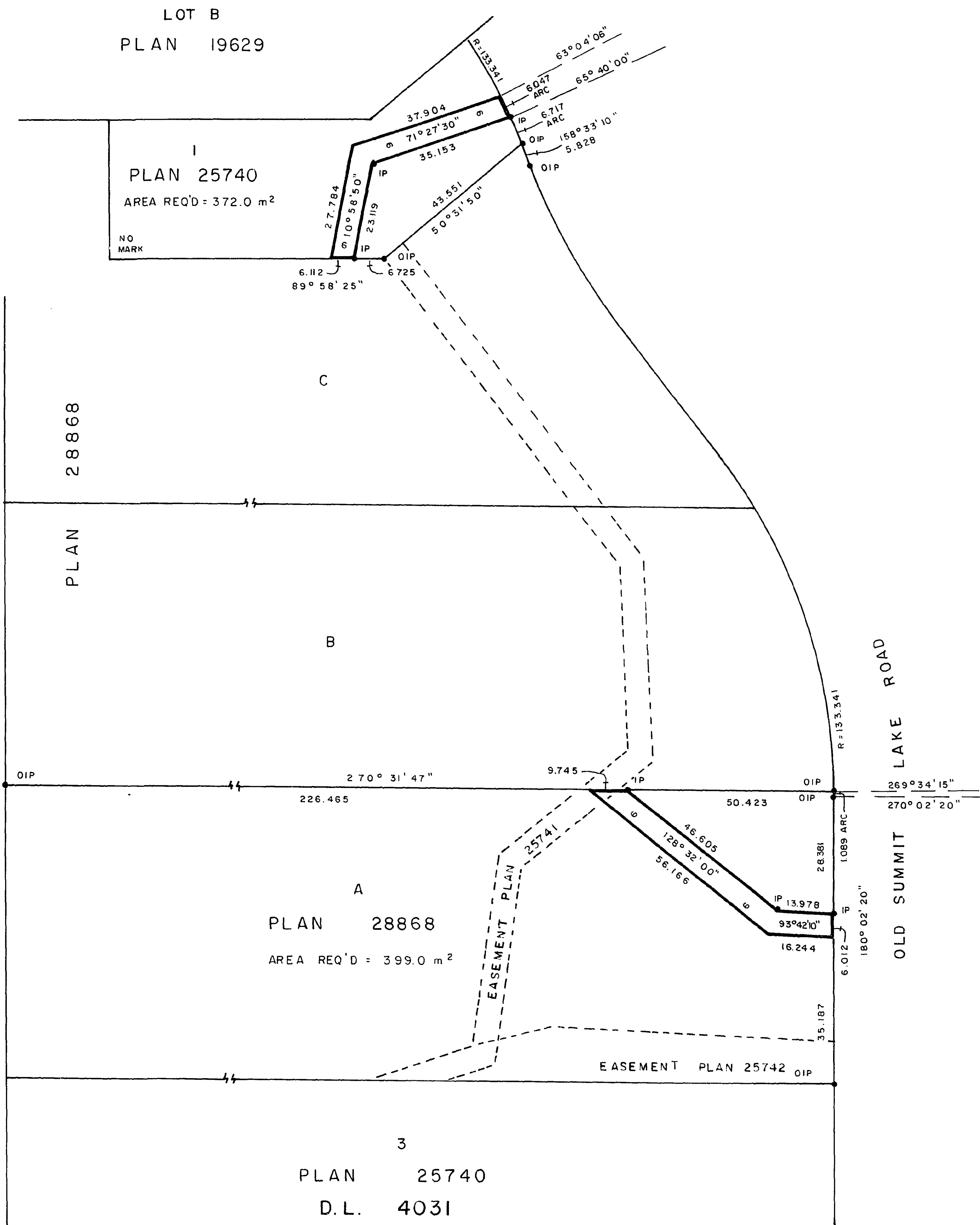
NOTE: Bearings are astronomic, derived from the south boundary of Lot I, Plan 25740 and the north boundary of Lot A, Plan 28868.

LEGEND: • OIP denotes an old iron pin found.
• IP denotes an iron pin set.

PLAN N^o 29680

Deposited in the Land Title Office at Prince George, B.C. this 2nd day of Dec, 1983.

acting Registrar *J. Carlaw per A*



I, DONALD A. DUFFY, a British Columbia Land Surveyor, of Prince George, in British Columbia, certify that I was present at and did personally superintend the survey represented by this plan, and that the survey and plan are correct. The survey was completed on the 31st day of August, 1983.

[Signature]

This plan lies within the Fraser-Fort George Regional District.

W.D. USHER & ASSOCIATES
LAND SURVEYORS
PRINCE GEORGE - B.C.
PH 24-25 14050