

PLAN OF SUBDIVISION OF  
 LOT'S 11, 12 and ASSIGNED LOT B (N 32878)  
 OF BLOCK 278, PLAN 1268, D.L. 343,  
 CARIBOO DISTRICT.

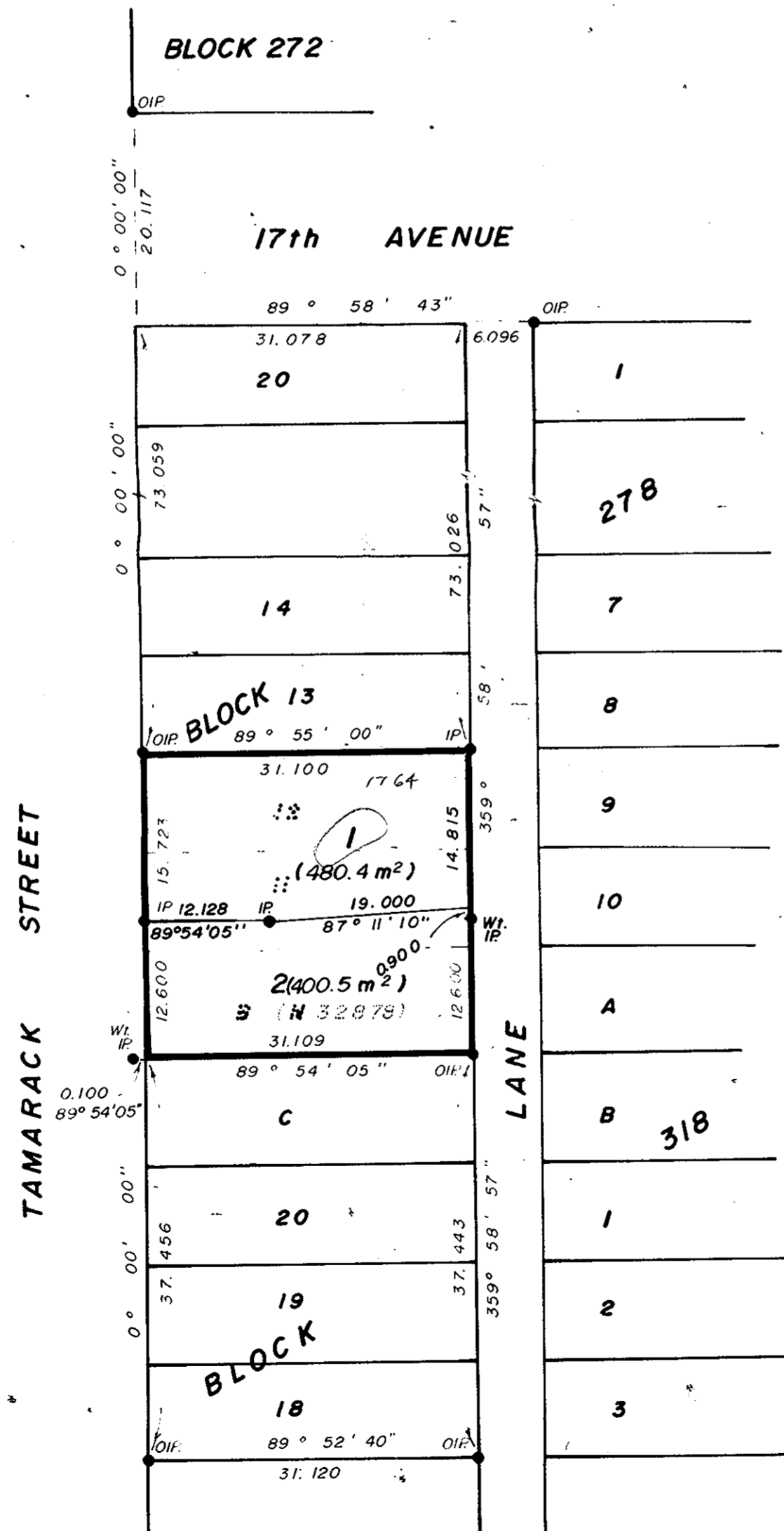
Scale: 1: 500 ( DISTANCES ARE IN METRES )



PLOTTED H.L.

PLAN 29670  
 Deposited in the Land Title Office  
 at Prince George, B.C.  
 on the 30 day of Nov 1983

J.C.  
 Registrar



Bearings are astronomic and are derived from  
 Plan 1268.

- ⊙ P.con. Standard Concrete Post.
- ⊙ P.Rock Standard Rock Post.
- P.P. Standard Pipe Post.
- I.P. Standard Iron Post.
- P. Wooden Post.
- L.P. Lead Plug.
- Denoting "Old"
- WT. Denoting "Witness"
- CIP Capped Iron Post.
- TH. Traverse Hub.

I, Victor Bartell, a British Columbia  
 land surveyor, of Prince George,  
 in British Columbia, certify that I was present  
 at and personally superintended the survey  
 represented by this plan, and that the survey  
 and plan are correct. The survey was completed  
 on the 30th day of November 1983.

*Victor Bartell*  
 Victor Bartell, B.C.L.S.

Approved under the Land Title Act on  
 the 17th day of Nov. 1983.

*P.E. Olot*  
 Approving Officer  
 City of Prince George

This Plan lies within the Fraser Fcrt. George  
 Regional District

Owner: *Tonka Lulic*  
 Tonka Lulic

Witness: *John Krown*  
 ADDRESS: 202-1575-5<sup>th</sup> Ave  
 Prince George, B.C. POSTAL CODE V2L 3L9  
 OCCUPATION: B.C. Land Surveyor

McWilliam-Whyte-Goble & Associates  
 B.C. Land Surveyors  
 Kamloops-Prince George-Salmon Arm-Smithers  
 FB/P D.L. 343 File No. 83113