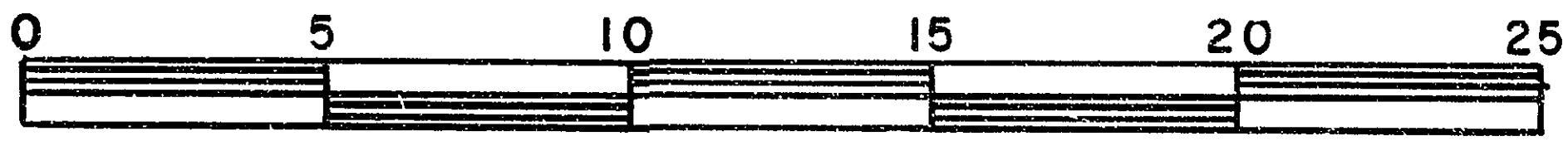


26-FF-226

REFERENCE PLAN OF EASEMENT THROUGH
LOT 1, PLAN 29628
DISTRICT LOT 913
CARIBOO DISTRICT - BRITISH COLUMBIA

SCALE: 1 : 250



PLAN N^o 29629

Deposited in the Land Title
Office at Prince George, B.C. this
15 day of Nov., 1983.

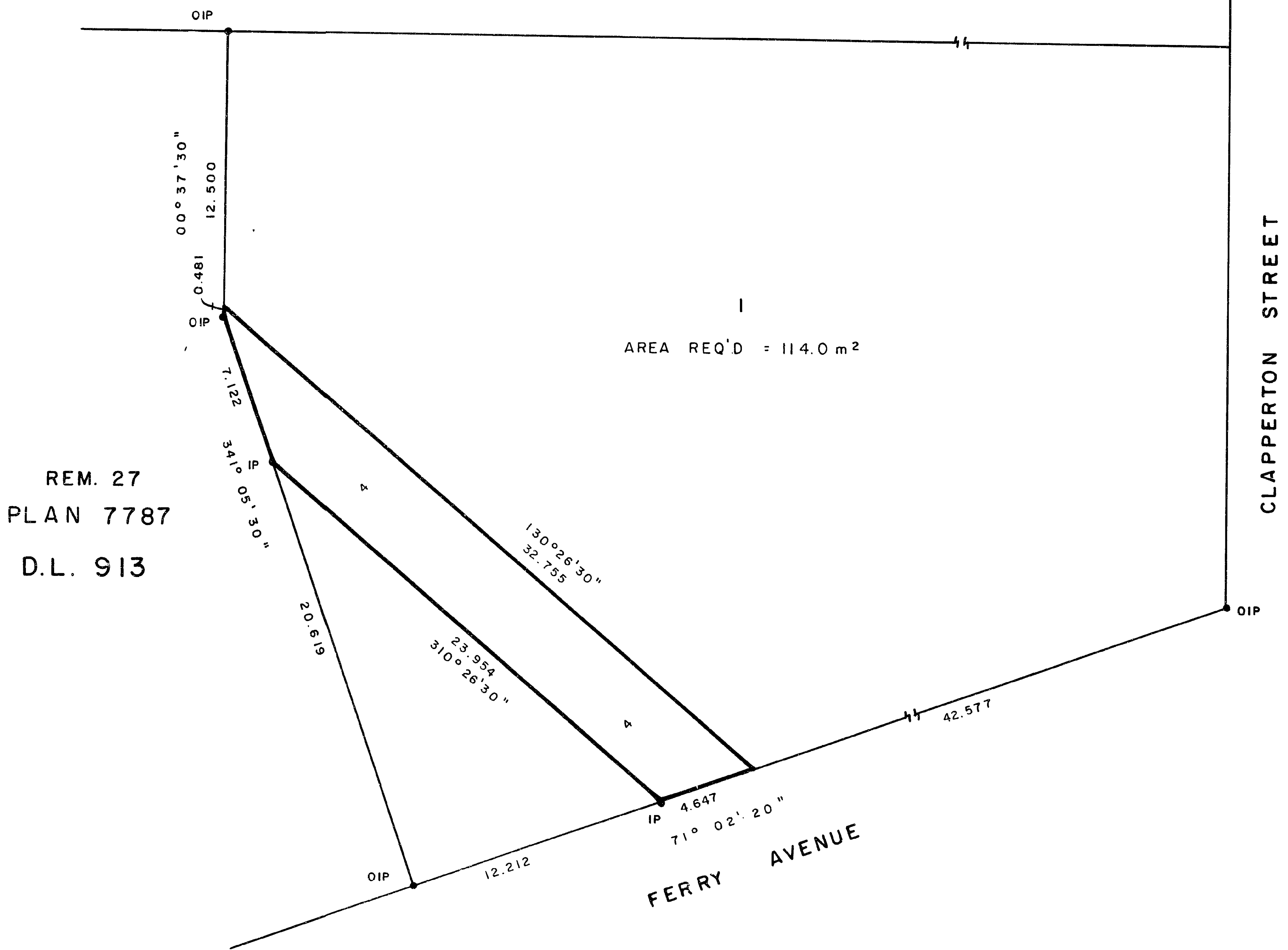
NOTE: Bearings are astronomic, derived from the
south boundary of Lot 1, Plan

LEGEND: • OIP denotes an old iron pin found.
• IP denotes an iron pin set.

J. Carlson
Registrar - Acting
per: *ff*



26
PLAN 7787



REM. 27
PLAN 7787
D.L. 913

I, DONALD A. DUFFY, a British Columbia Land
Surveyor, of Prince George, in British Columbia,
certify that I was present at and did personally
superintend the survey represented by this plan,
and that the survey and plan are correct. The
survey was completed on the 25 day of OCT.,
1983.

This plan lies within the Fraser- Fort George
Regional District.

W. D. USHER & ASSOCIATES
LAND SURVEYORS
PRINCE GEORGE - B.C.

PD 72 12115 A