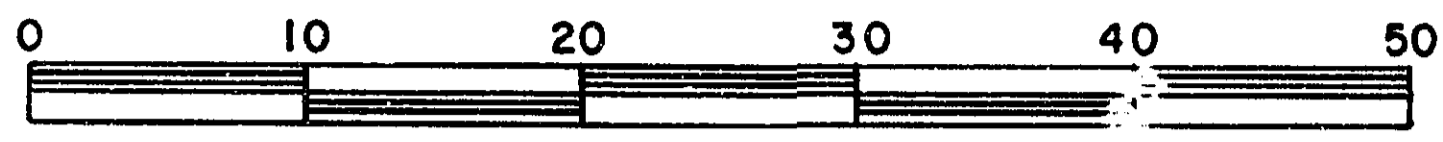


# 26-FF-226

REFERENCE PLAN OF EASEMENT THROUGH  
 LOTS 2 & 3, PLAN 27772 &  
 REMAINDER OF LOT A, PLAN 20573  
 DISTRICT LOT 2099  
 CARIBOO DISTRICT—BRITISH COLUMBIA  
 SCALE: 1 : 500



NOTE: Bearings are astronomic, derived from the westerly boundary of Lot 3, Plan 27772.

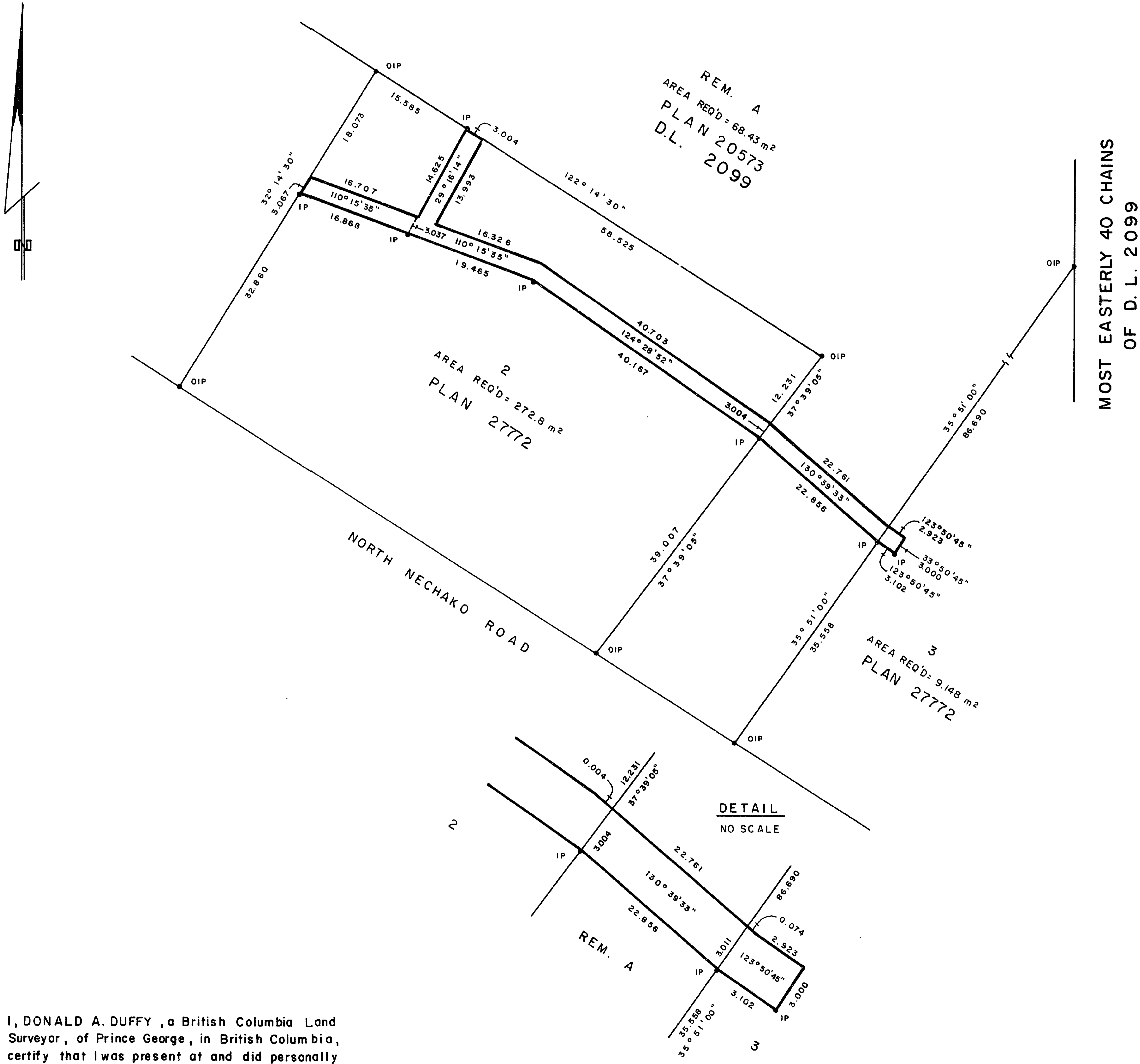
LEGEND: • OIP denotes an old iron pin found.  
 • IP denotes an iron pin set.

PLAN N<sup>o</sup> 29571  
 Deposited in the Land Title Office at Prince George, B.C. this 14 day of Oct, 1983.

Registrar E.J. Duff

BOOK OF REFERENCE

| PARCEL             | AREA REQ'D           |
|--------------------|----------------------|
| LOT 2, PLAN 27772  | 272.8 m <sup>2</sup> |
| LOT 3, PLAN 27772  | 9.148 m <sup>2</sup> |
| REM. A, PLAN 20573 | 68.43 m <sup>2</sup> |



MOST EASTERLY 40 CHAINS OF D. L. 2099

I, DONALD A. DUFFY, a British Columbia Land Surveyor, of Prince George, in British Columbia, certify that I was present at and did personally superintend the survey represented by this plan, and that the survey and plan are correct. The survey was completed on the 29 day of SEPT., 1983.

D.A. Duffy

This plan lies within the Fraser-Fort George Regional District.

W.D. USHER & ASSOCIATES  
 LAND SURVEYORS  
 PRINCE GEORGE — B.C.  
 PH 36 14084