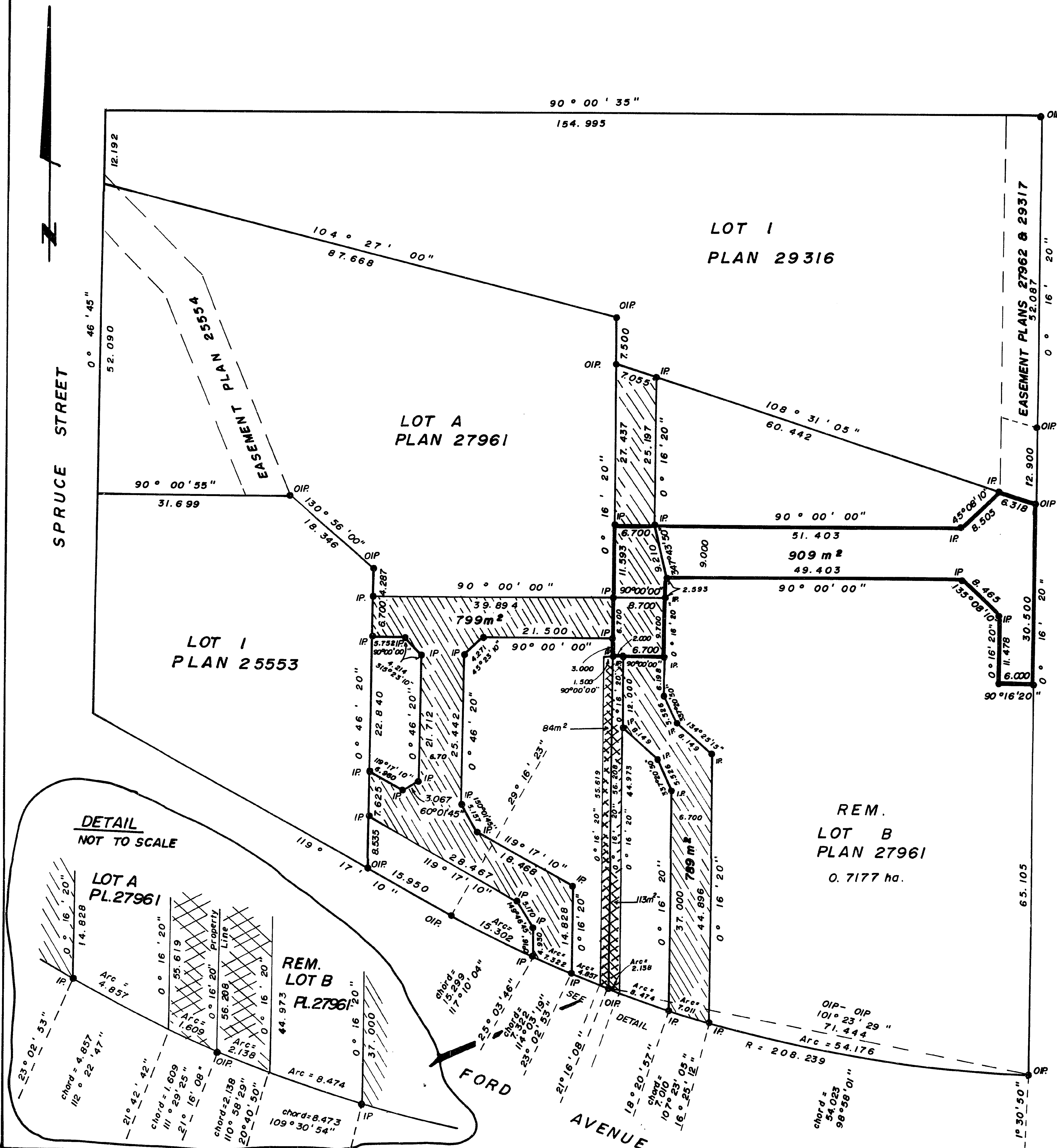


26-FF-226

PLAN NO. 29552

DEPOSITED IN THE LAND TITLE OFFICE AT PRINCE GEORGE
THIS 14th DAY OF OCT 1983.

E. J. Ross
REGISTRAR



REFERENCE PLAN OF EASEMENTS
IN LOTS A and REM. B, PLAN 27961,
DISTRICT LOT 913, CARIBOO DISTRICT.

SCALE: 1:500 (DISTANCES ARE IN METRES)



LEGEND

BEARINGS ARE ASTRONOMIC DERIVED FROM
PLAN 27961.

- I.P. STANDARD IRON POST.
- DENOTES "OLD"
- R DENOTES "RADIUS"

I V. BARTELL A BRITISH COLUMBIA LAND SURVEYOR OF
PRINCE GEORGE IN BRITISH COLUMBIA CERTIFY THAT I WAS
PRESENT AT AND PERSONALLY SUPERINTENDED THE SURVEY
REPRESENTED BY THIS PLAN AND THAT THE SURVEY AND PLAN
ARE CORRECT. THE SURVEY WAS COMPLETED ON THE 2/ DAY
OF SEPTEMBER, 1983.

V. Bartell
V. BARTELL, B.C.L.S.

DESCRIPTION	AREA
UTILITY EASEMENT (black outline) in LOT B, PLAN 27961	909 m ²
ACCESS EASEMENT (hatched) in LOT A, PLAN 27961	799 m ²
UTILITY EASEMENT (cross hatched) B.C. Telephone B.C. Hydro in LOT A, PLAN 27961	84 m ²
UTILITY EASEMENT (cross hatched) in LOT B, PLAN 27961	113 m ²

THIS PLAN LIES WITHIN THE FRASER
FORT GEORGE REGIONAL DISTRICT.

McWILLIAM, WHYTE, GOBLE, & ASSOCIATES,
B.C. LAND SURVEYORS,
PRINCE GEORGE KAMLOOPS-SMITHERS-SALMON ARM

REF. NO. 8 3097 D.L. 913