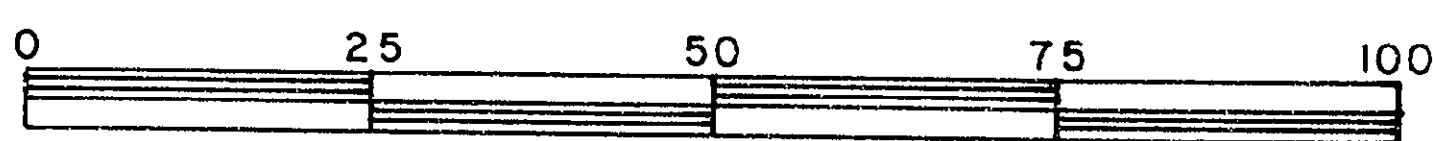


26-FF-226

29541

PLAN OF SUBDIVISION OF
 LOT 23, PLAN 17033 & OF ADJACENT CLOSED ROAD
 DISTRICT LOT 4047 & PART OF REMAINDER OF
 S. E. 1/4 DISTRICT LOT 4047
 CARIBOO DISTRICT— BRITISH COLUMBIA
 SCALE: 1000



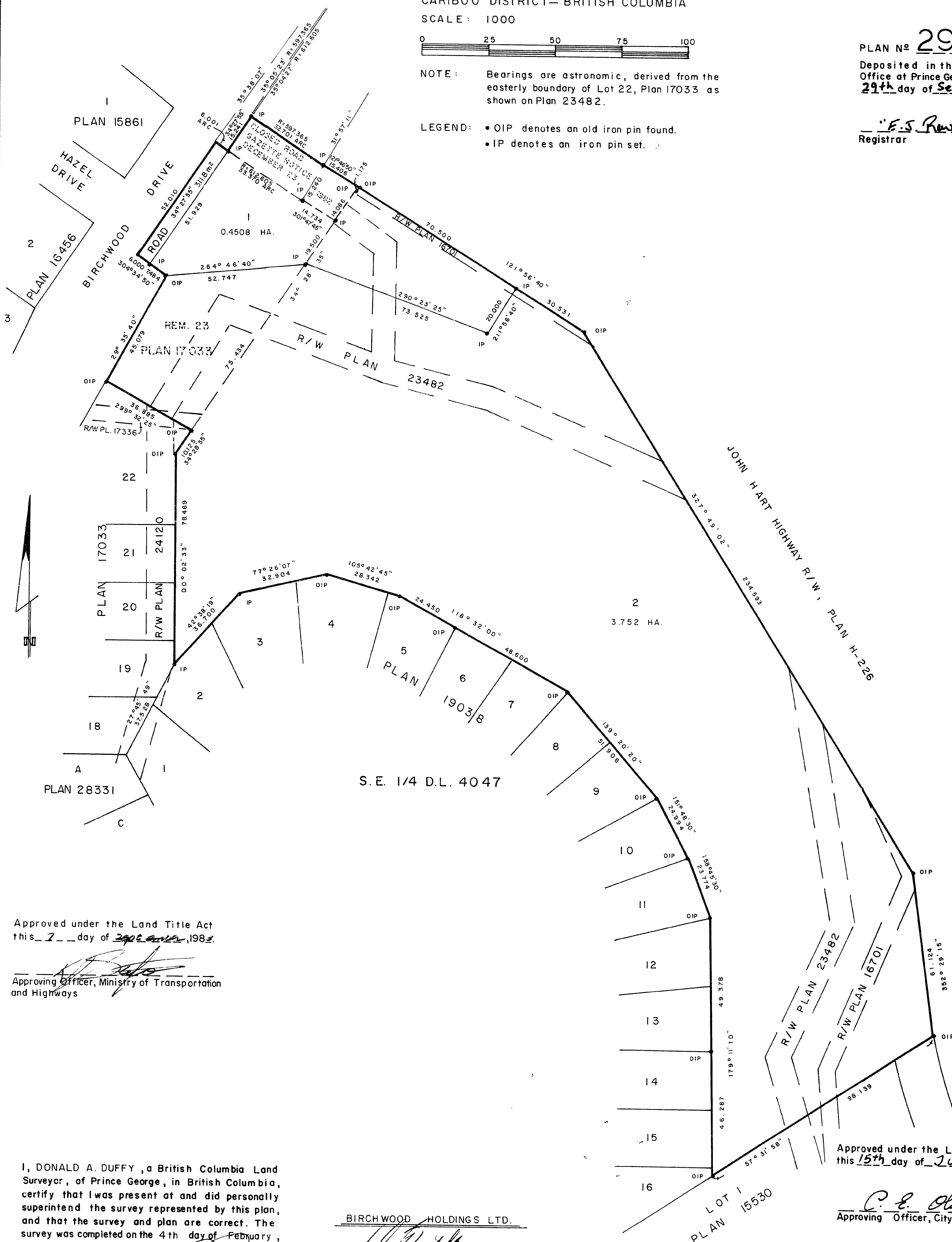
NOTE: Bearings are astronomic, derived from the easterly boundary of Lot 22, Plan 17033 as shown on Plan 23482.

LEGEND: • OIP denotes an old iron pin found.
 • IP denotes an iron pin set.

PLAN No 29541

Deposited in the Land Title Office at Prince George, B.C. this 29th day of Sept., 1983.

E.S. Reviewer
 Registrar



Approved under the Land Title Act this 7th day of September, 1983.

Approving Officer, Ministry of Transportation and Highways

I, DONALD A. DUFFY, a British Columbia Land Surveyor, of Prince George, in British Columbia, certify that I was present at and did personally superintend the survey represented by this plan, and that the survey and plan are correct. The survey was completed on the 4th day of February, 1983.

BIRCHWOOD HOLDINGS LTD.

Authorized Signatory

Authorized Signatory

Approved under the Land Title Act this 15th day of JULY, 1983

Approving Officer, City of Prince George

This plan lies within the Fraser-Fort George Regional District.

W.D. USHER & ASSOCIATES
 LAND SURVEYORS
 PRINCE GEORGE — B.C.
 9395 A

Approval of this subdivision plan is subject to the condition that there be concurrent registration of a right-of-way agreement as a first charge in each case, concerning municipal utility works which said agreement has been initialled by me for identification.

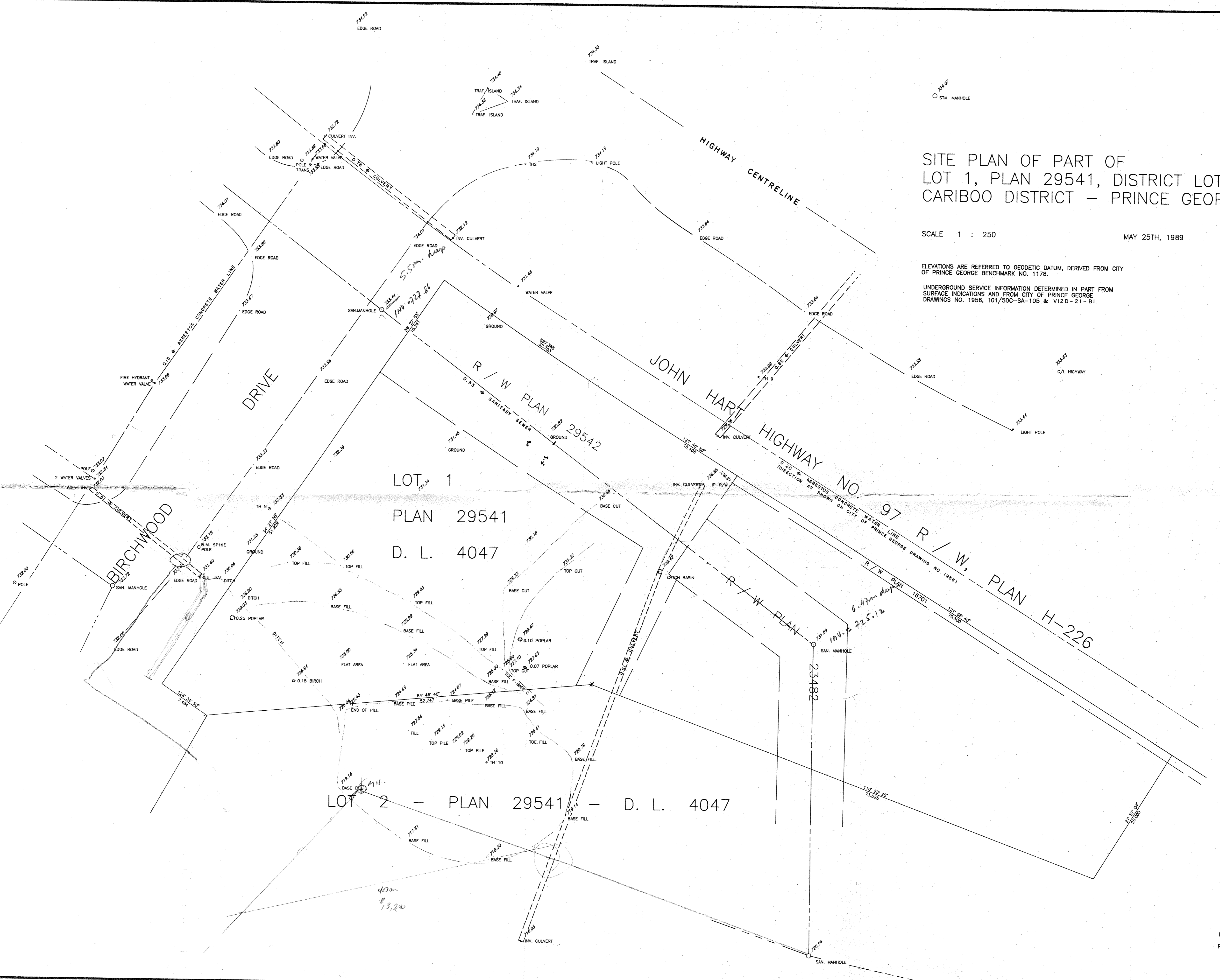
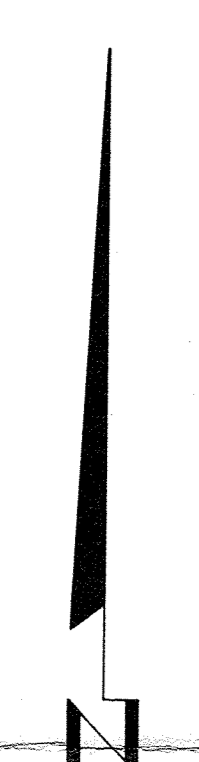
SITE PLAN OF PART OF
 LOT 1, PLAN 29541, DISTRICT LOT 4047
 CARIBOO DISTRICT - PRINCE GEORGE, B.C.

SCALE 1 : 250

MAY 25TH, 1989

ELEVATIONS ARE REFERRED TO GEODETIC DATUM, DERIVED FROM CITY
 OF PRINCE GEORGE BENCHMARK NO. 1178.

UNDERGROUND SERVICE INFORMATION DETERMINED IN PART FROM
 SURFACE INDICATIONS AND FROM CITY OF PRINCE GEORGE
 DRAWINGS NO. 1956, 101/50C-SA-105 & V12 D-21-B1.



LOT 1
 PLAN 29541
 D. L. 4047

LOT 2 - PLAN 29541 - D. L. 4047