

26-FF-226

REFERENCE PLAN OF
 STATUTORY RIGHT-OF-WAY FOR MUNICIPAL PURPOSES THROUGH
 LOT A, PLAN 21321
 DISTRICT LOT 777
 CARIBOO DISTRICT - BRITISH COLUMBIA

SCALE: 1 : 500



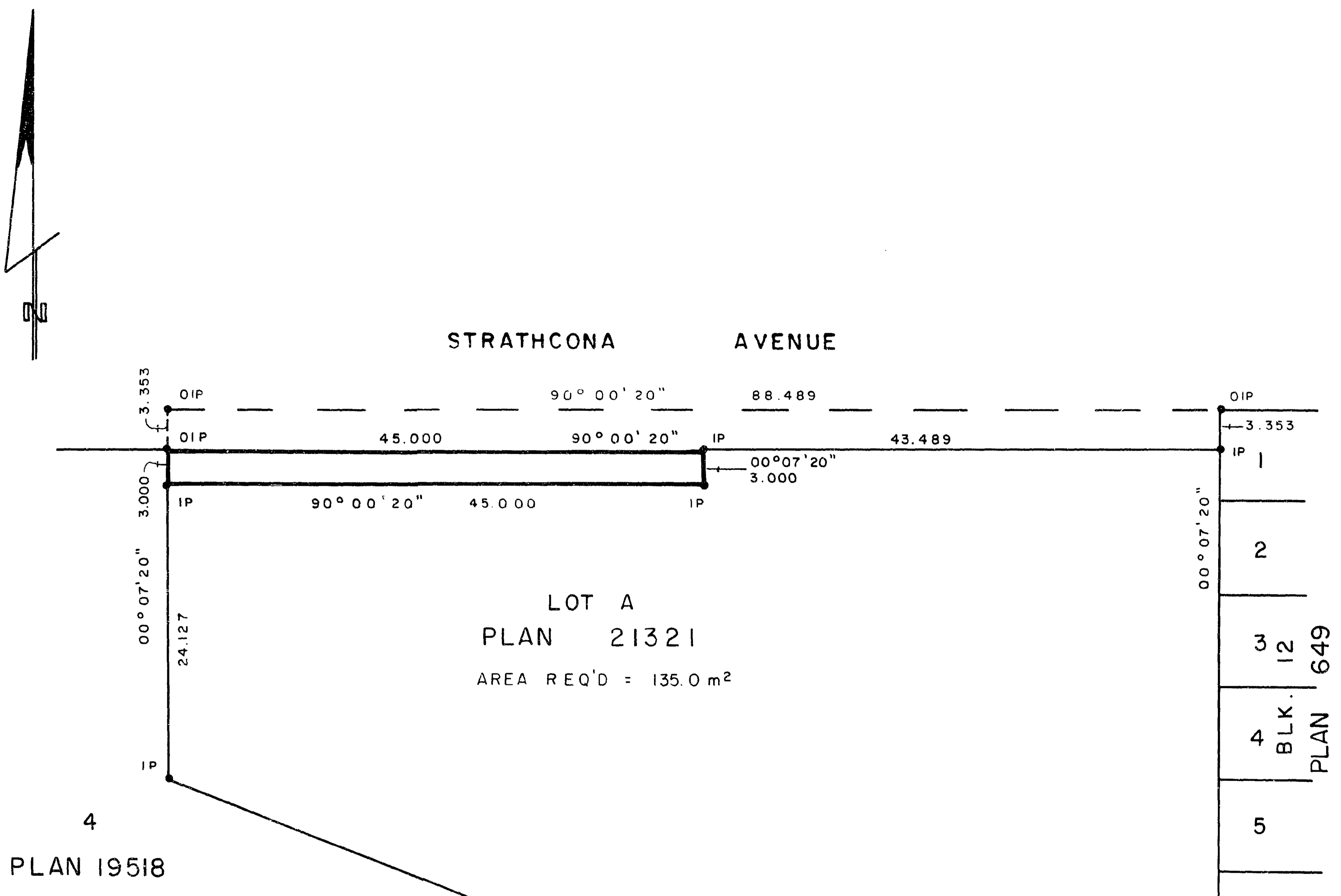
NOTE: Bearings are astronomic, derived from the south boundary of Strathcona Avenue as shown on Plan 19518.

LEGEND: • OIP denotes an old iron pin found.
 • IP denotes an iron pin set.

PLAN No **29528**

Deposited in the Land Title Office at Prince George, B.C. this 22 day of SEPT., 1983.

E.J. RAVEN
 Registrar *E.S.*



4
 PLAN 19518

I, DONALD A. DUFFY, a British Columbia Land Surveyor, of Prince George, in British Columbia, certify that I was present at and did personally superintend the survey represented by this plan, and that the survey and plan are correct. The survey was completed on the 19 day of SEPT., 1983.

This plan lies within the Fraser-Fort George Regional District.

W. D. USHER & ASSOCIATES
 LAND SURVEYORS
 PRINCE GEORGE — B.C.
 NZ 64 14 07 8