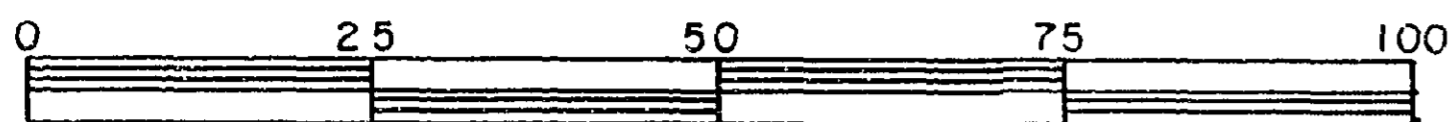


26-FF-226

REFERENCE PLAN OF
STATUTORY RIGHT-OF-WAY FOR MUNICIPAL PURPOSES
THROUGH REMAINDER OF LOT A, PLAN 20053
DISTRICT LOT 2400
CARIBOO DISTRICT - BRITISH COLUMBIA

SCALE: 1 : 1000



NOTE: Bearings are astronomic, derived from the northwesterly boundary of Foothills Boulevard, Plan 27410.

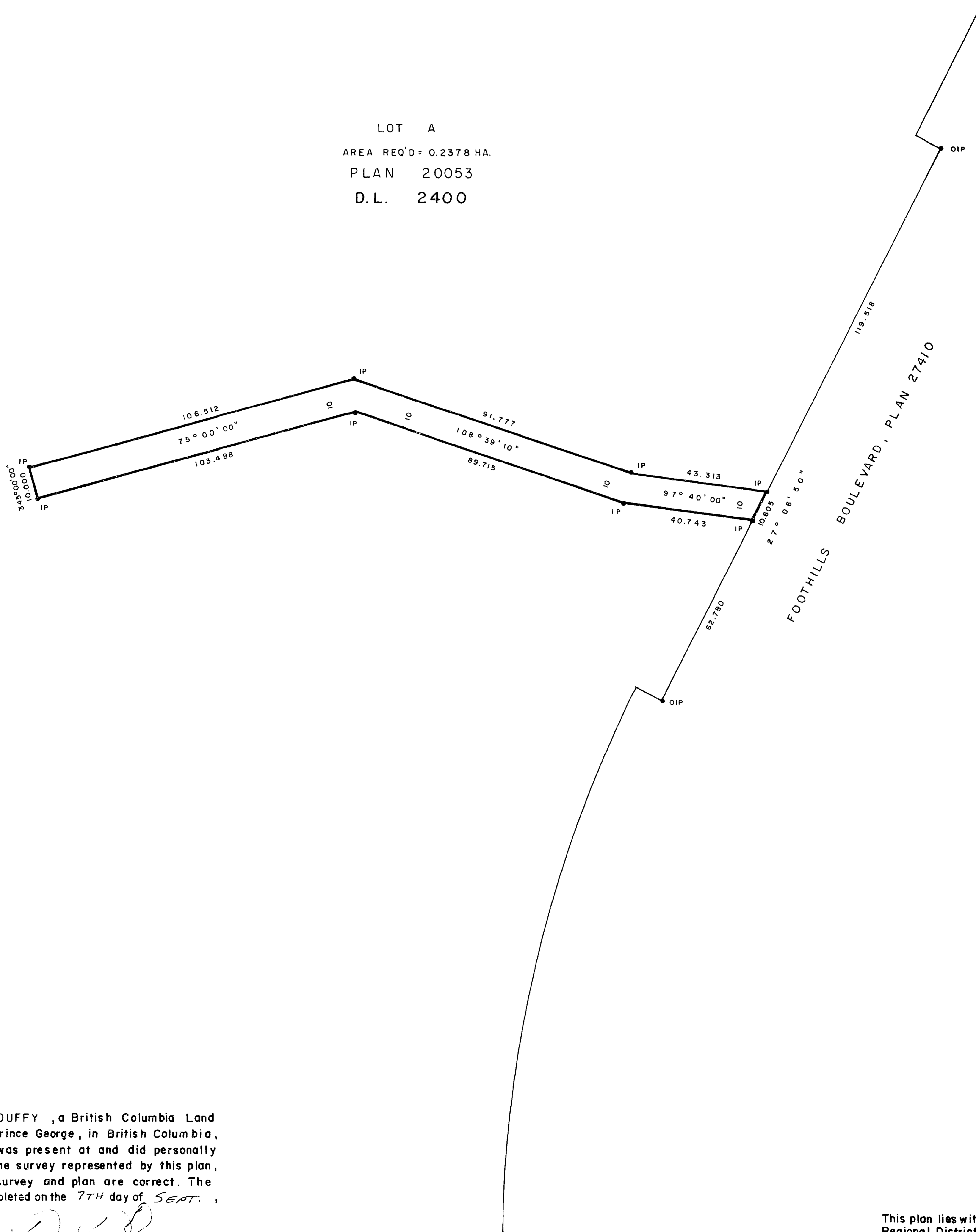
LEGEND: • OIP denotes an old iron pin found.
• IP denotes an iron pin set.

PLAN No 29501

Deposited in the Land Title Office at Prince George, B.C. this 7th day of Sept, 1983.

Registrar *E. J. Raven*

LOT A
AREA REQ'D = 0.2378 HA.
PLAN 20053
D.L. 2400



I, DONALD A. DUFFY, a British Columbia Land Surveyor, of Prince George, in British Columbia, certify that I was present at and did personally superintend the survey represented by this plan, and that the survey and plan are correct. The survey was completed on the 7TH day of SEPT., 1983.

Donald A. Duffy

This plan lies within the Fraser-Fort George Regional District.

W.D. USHER & ASSOCIATES
LAND SURVEYORS
PRINCE GEORGE - B.C.
OU 49 14057