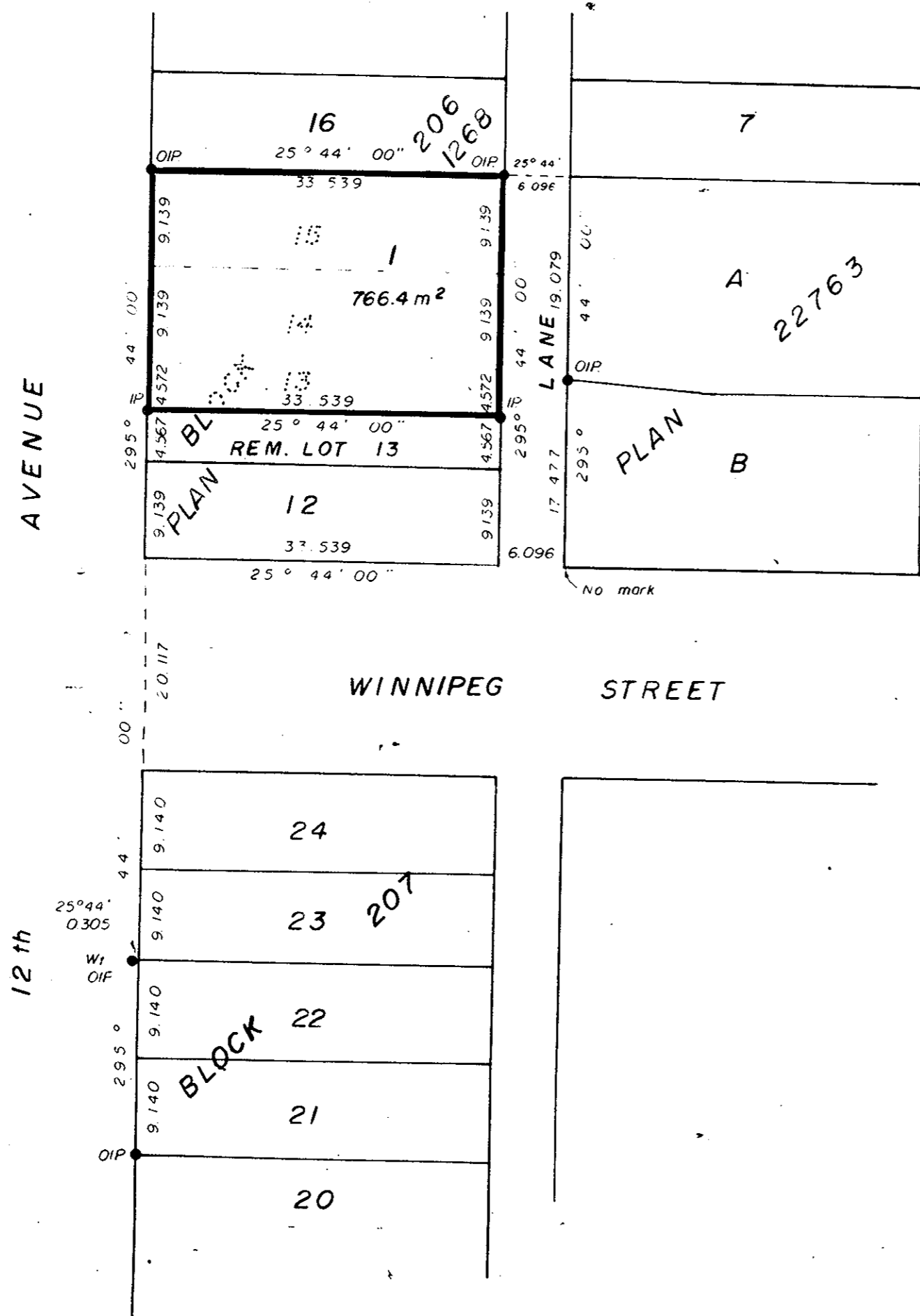


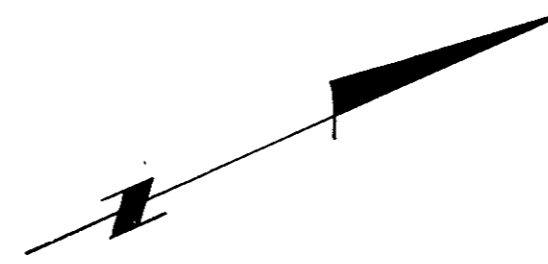
PLAN OF SUBDIVISION OF  
PART OF LOT 13 and LOTS 14 and 15  
OF BLOCK 206, PLAN 1268,  
DISTRICT LOT 343, CARIBOO DISTRICT.

SCALE: 1:500 (ALL DISTANCES ARE IN METRES)



PLAN 29497  
Deposited in the Land Title Office  
at Prince George, B.C.  
on the 24th day of Sept 1983.

*E. R.*  
Registrar



Bearings are astronomic and are derived from  
Plan 1268

- ⊙ Rcon. .... Standard Concrete Post.
- ⊙ P Rock .... Standard Rock Post.
- PP .... Standard Pipe Post.
- I.P. .... Standard Iron Post.
- P. .... Wooden Post.
- L.P. .... Lead Plug.
- ..... Denoting "Old"
- WT. .... Denoting "Witness"
- CIP .... Capped Iron Post.
- TH. .... Traverse Hub.

I, V. BOETTCH, a British Columbia  
land surveyor, of Prince George  
in British Columbia, certify that I was present  
at and personally supervised the survey  
represented by this plan, and that the survey  
and plan are correct. The survey was completed  
on the 21 day of JULY 19 83.

*Victor Boettch*  
V. Boettch, B.C.L.S.

Approved under the Land Title Act on  
the 25 day of JULY 19 83

*C. E. Olf*  
Approving Officer  
City of Prince George

Owners Viado Vukovic

Mary Vukovic

Witness  
to both signatures  
ADDRESS  
POSTAL CODE  
OCCUPATION

Owner City of Prince George

*[Signature]*  
Mayor  
*[Signature]*  
Clerk

This Plan lies within the Fraser-Fort George  
Regional District

McWilliam-Whyte-Goble & Associates  
B.C. Land Surveyors  
Kamloops-Prince George-Salmon Arm-Smithers  
FB/P.D.L. 343 File No. B3079