

26-FF-226

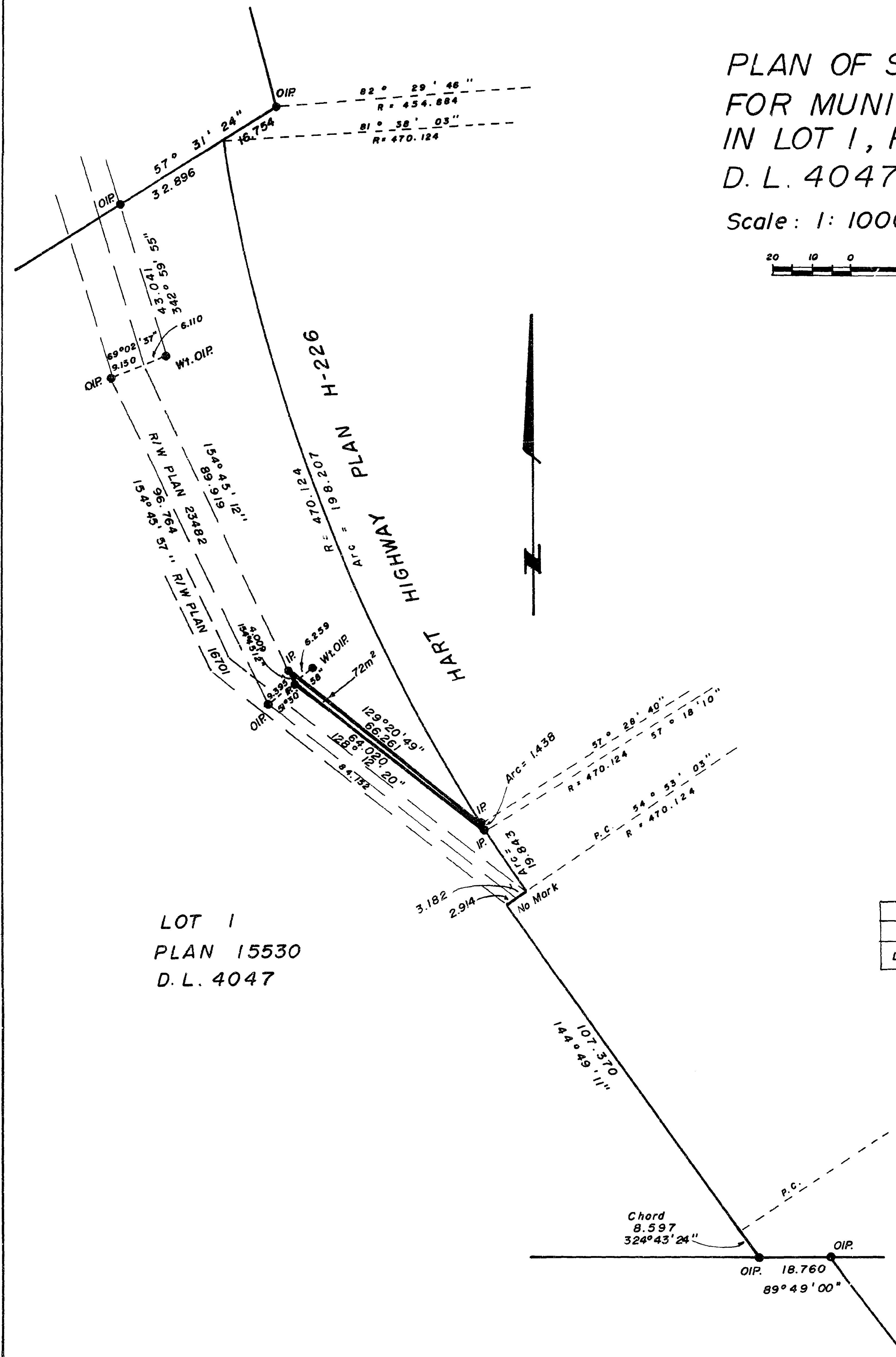
PLAN NO. 29489

DEPOSITED IN THE LAND TITLE OFFICE AT PRINCE GEORGE THIS 2nd DAY OF Sept 1983.

E.S. Rowan
REGISTRAR

PLAN OF STATUTORY RIGHT-OF-WAY FOR MUNICIPAL PURPOSES IN LOT 1, PLAN 15530, D. L. 4047, CARIBOO DISTRICT.

Scale: 1:1000 (DISTANCES ARE IN METRES)



LOT 1
PLAN 15530
D.L. 4047

BEARINGS ARE ASTRONOMIC DERIVED FROM PLAN 23482.

- IP.....STANDARD IRON POST.
- O.....DENOTES "OLD"
- WI.....DENOTES WITNESS.

I, V. BARTELL, A BRITISH COLUMBIA LAND SURVEYOR OF PRINCE GEORGE IN BRITISH COLUMBIA CERTIFY THAT I WAS PRESENT AT AND PERSONALLY SUPERINTENDED THE SURVEY REPRESENTED BY THIS PLAN AND THAT THE SURVEY AND PLAN ARE CORRECT. THE SURVEY WAS COMPLETED ON THE 21 DAY OF August 1983.

Victor Bartell
V. BARTELL, B.C.L.S.

BOOK OF REFERENCE	
DESCRIPTION	AREA
LOT 1, PLAN 15530,	72 m ²

THIS PLAN LIES WITHIN THE FRASER FORT GEORGE REGIONAL DISTRICT.

McWILLIAM, WHYTE, GOBLE, & ASSOCIATES,
B.C. LAND SURVEYORS
PRINCE GEORGE-KAMLOOPS-SMITHERS-SALMON ARM.

REF. NO. 83084