

EXPLANATORY PLAN TO ACCOMPANY LEASE OF
 PART OF THE GROUND FLOOR OF A BUILDING LOCATED ON
 LOT 3, PLAN 23130
 DISTRICT LOT 754
 CARIBOO DISTRICT- BRITISH COLUMBIA
 SCALE: 1 : 500

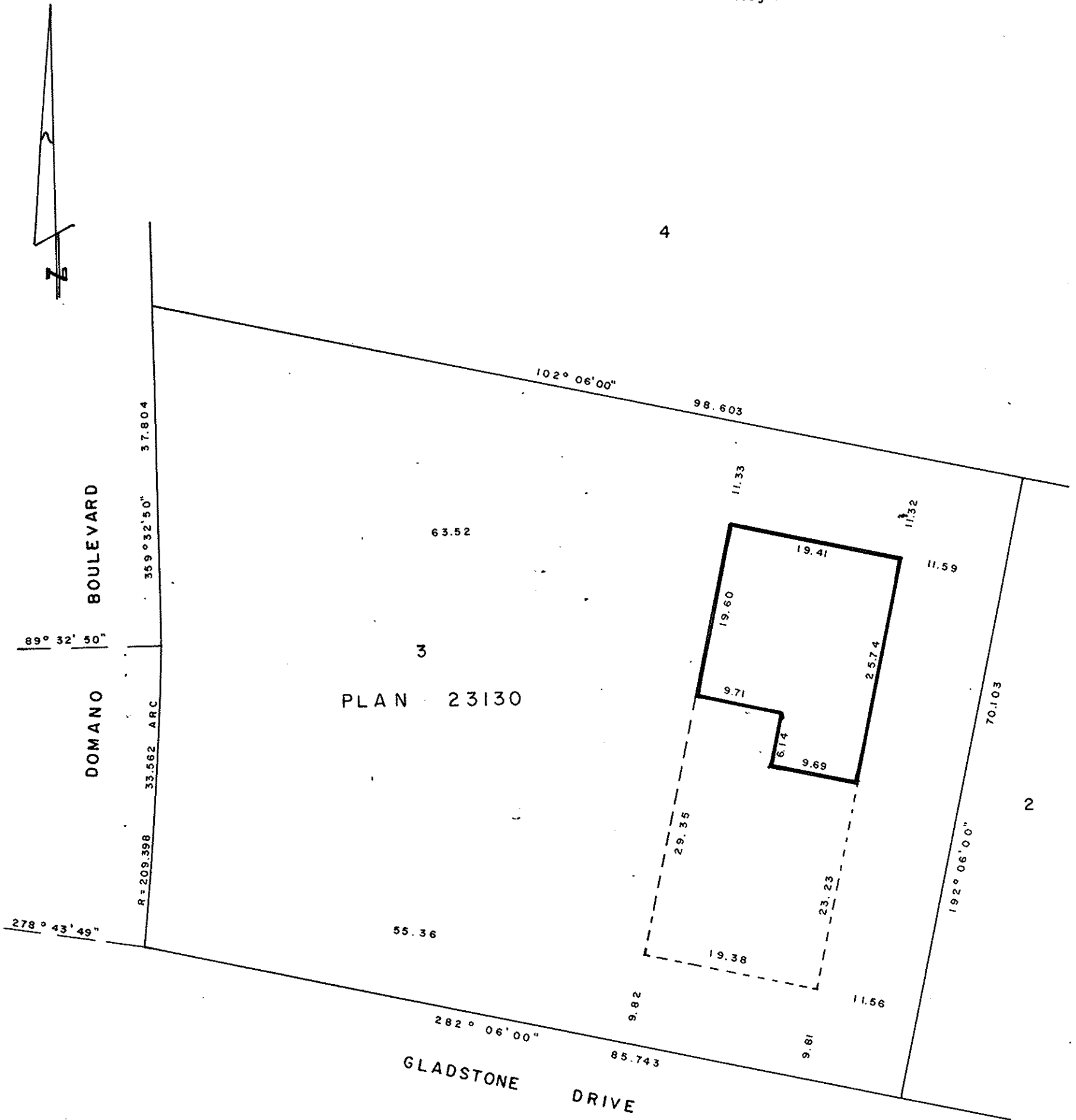


NOTE: Bearings are astronomic, derived from Plan 23130.

PLAN No 29482

Deposited in the Land Title Office at Prince George, B.C. this
 1 day of Sept., 1983.

E.S.R.
 Registrar



CERTIFIED CORRECT
 This 26 day of AUGUST, 1983.

D.A. Duffy
 D.A. DUFFY, B.C.L.S.

This plan lies within the Fraser- Fort George Regional District.

W. D. USHER & ASSOCIATES
 LAND SURVEYORS
 PRINCE GEORGE — B. C.
 OU 44 14043