

26-FF-226

INLAND NATURAL GAS COMPANY
REFERENCE PLAN OF STATUTORY RIGHT-OF-WAY
FOR NATURAL GAS PIPELINE THROUGH
BLOCK A
DISTRICT LOT 1432
CARIBOO DISTRICT - BRITISH COLUMBIA

SCALE: 1 : 500



NOTE: Bearings are astronomic, derived from the north boundary of Lot 1, Plan 8749, as shown on Plan 21569.

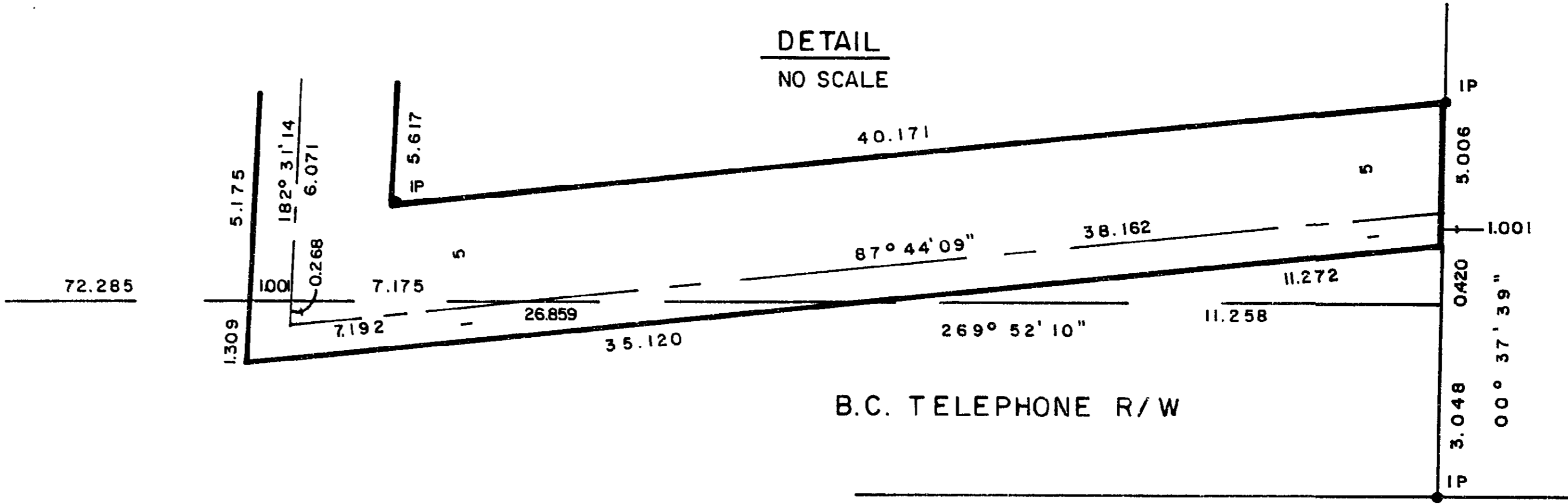
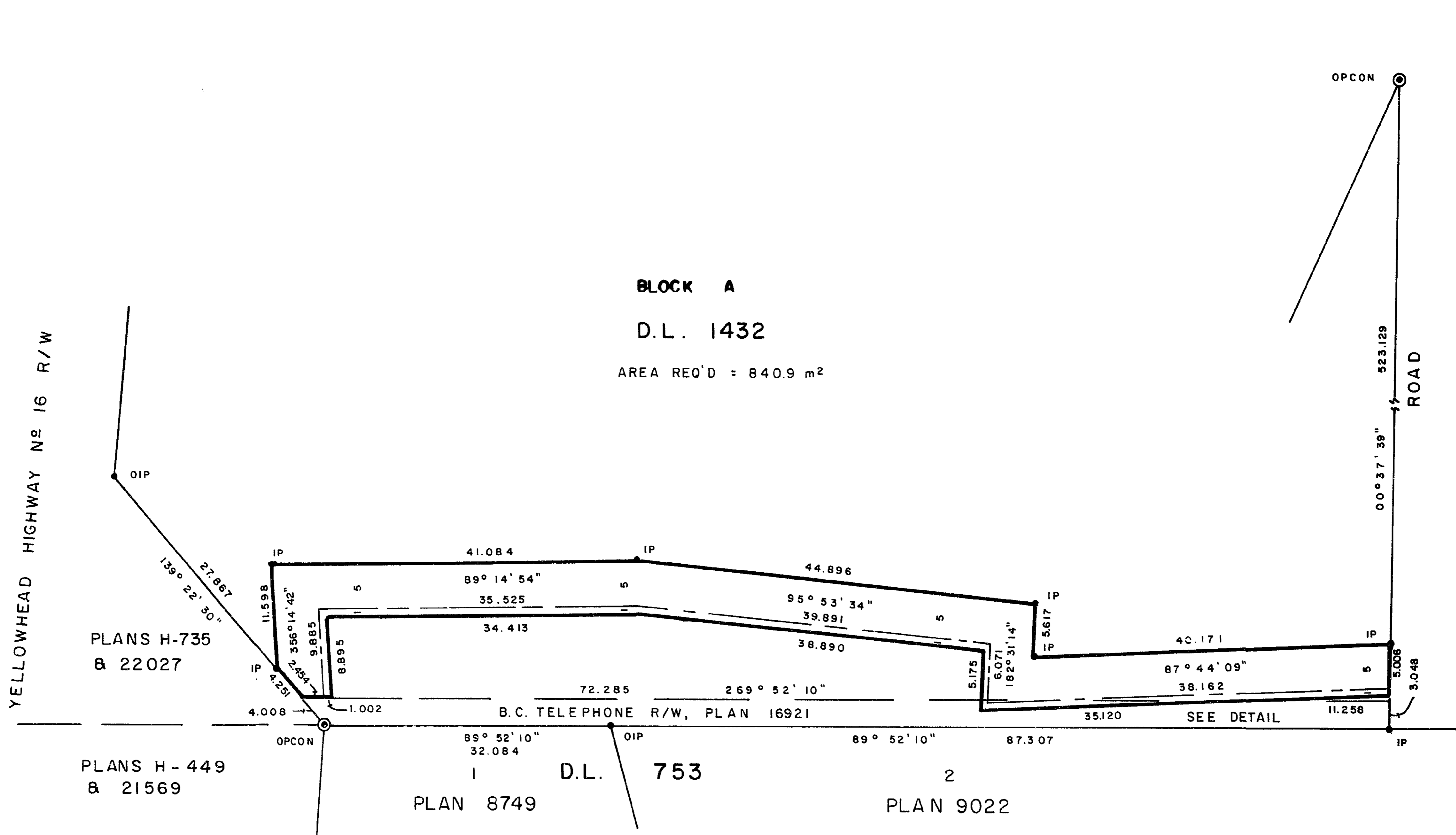
LEGEND: OPCON denotes an old concrete monument found.
 OIP denotes an old iron pin found.
 IP denotes an iron pin set.

PLAN No **29470**

Deposited in the Land Title Office at Prince George, B.C. this 26 day of August, 1983.

E. J. RAVEN
Registrar

For release of Restriction re: Cemetery Act see T 25 896



I, DONALD A. DUFFY, a British Columbia Land Surveyor, of Prince George, in British Columbia, certify that I was present at and did personally superintend the survey represented by this plan, and that the survey and plan are correct. The survey was completed on the 8 day of MARCH, 1983.

This plan lies within the Fraser-Fort George Regional District.

W.D. USHER & ASSOCIATES
LAND SURVEYORS
PRINCE GEORGE - B.C.
PB 26 13704