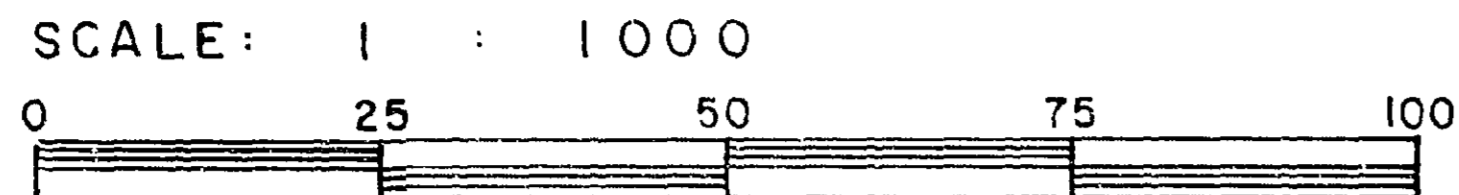


26-FF-226

REFERENCE PLAN OF EASEMENT THROUGH  
 LOTS 13 & 14, PLAN 14827  
 DISTRICT LOT 1598  
 CARIBOO DISTRICT - BRITISH COLUMBIA



NOTE: Bearings are astronomic, derived from the west boundary of Lot 14, Plan 14827.

LEGEND: • OIP denotes an old iron pin found.  
 • IP denotes an iron pin set.  
 WT denotes witness.

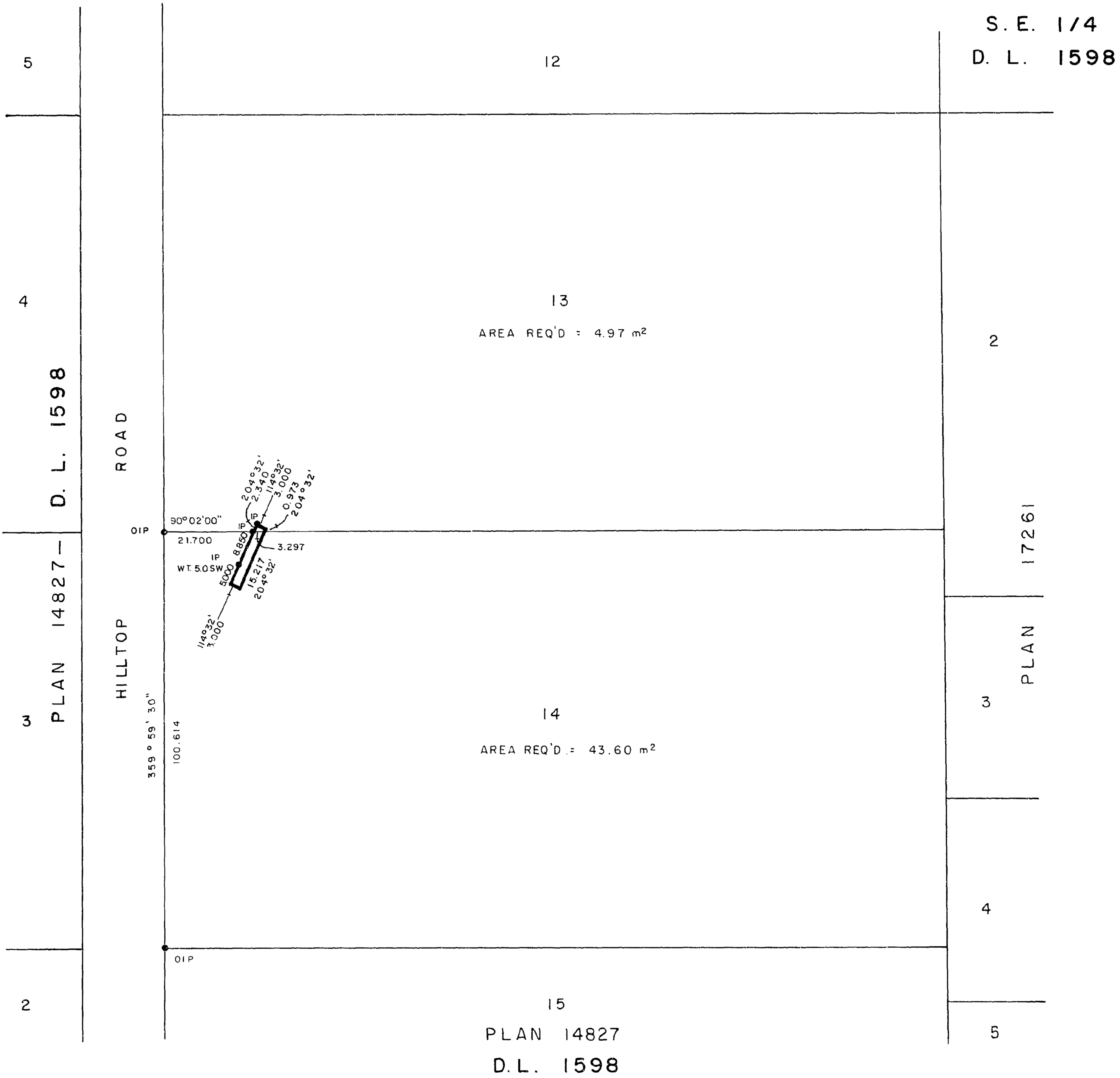
PLAN N<sup>o</sup> **29469**

Deposited in the Land Title Office at Prince George, B.C. this 26th day of August, 1983.

"E.S. Raven" p.c.  
 Registrar

BOOK OF REFERENCE

DESCRIPTION	AREA REQ'D
LOT 13, PLAN 14827	4.97 m <sup>2</sup>
LOT 14, PLAN 14827	43.60 m <sup>2</sup>



I, DONALD A. DUFFY, a British Columbia Land Surveyor, of Prince George, in British Columbia, certify that I was present at and did personally superintend the survey represented by this plan, and that the survey and plan are correct. The survey was completed on the 15 day of JULY, 1983.

This plan lies within the Fraser-Fort George Regional District.