

2825

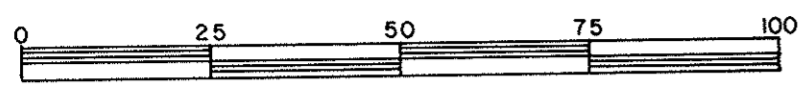
City of Prince George

City of Prince George

(d.c. 1983)

REFERENCE PLAN OF LEASE OF PARTS OF REMAINDER OF N.W. 1/4 OF DISTRICT LOT 4041 CARIBOO DISTRICT— BRITISH COLUMBIA

SCALE: 1 : 1000



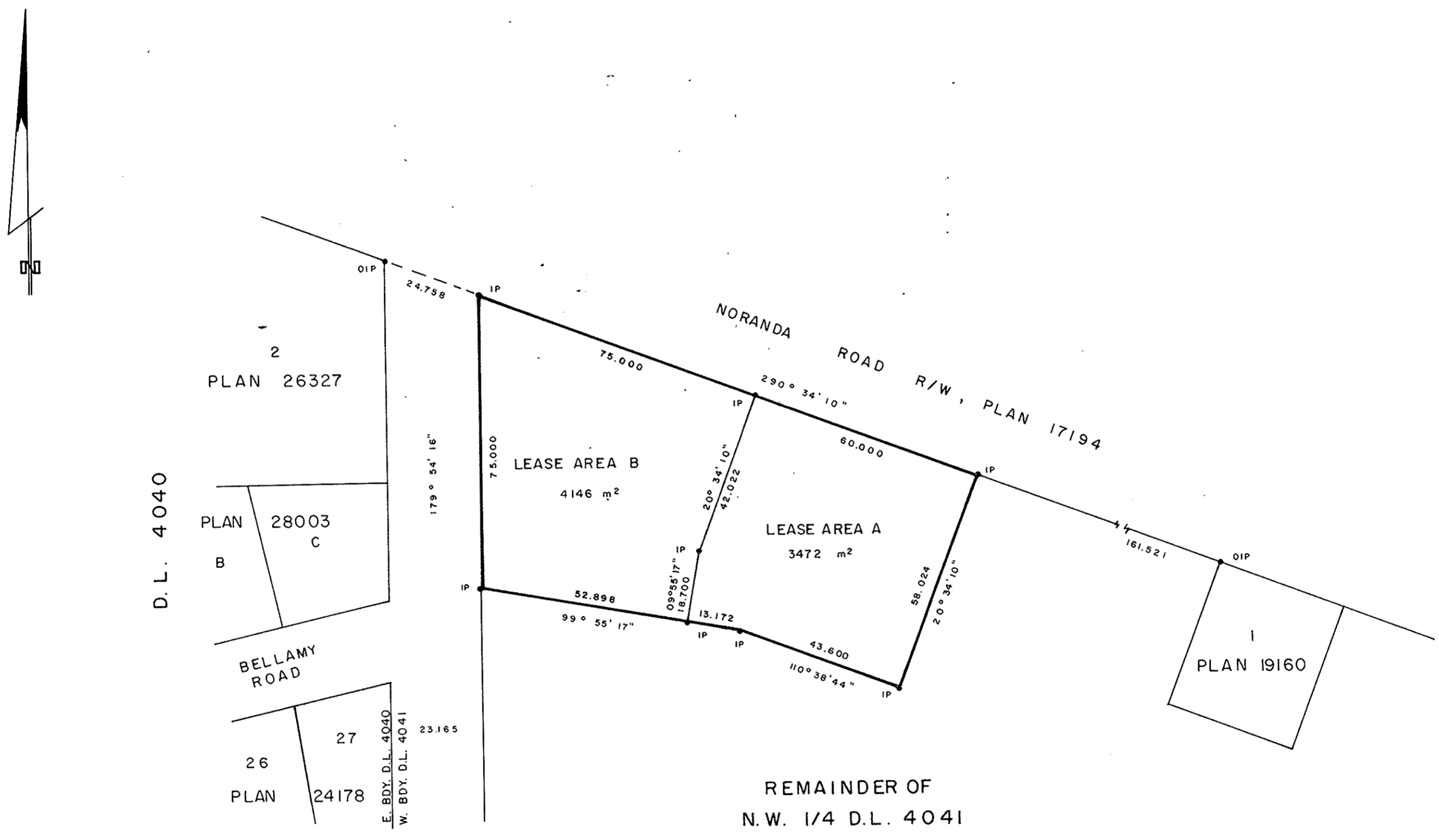
NOTE: Bearings are astronomic, derived from the south boundary of Noranda Road R/W, Plan 17194, as shown on Plan 19160.

LEGEND: •OIP denotes an old iron pin found. •IP denotes an iron pin set.

PLAN N^o 29459
Deposited in the Land Title Office at Prince George, B.C. this 22 day of August, 1983.

C. J. RAVEN
Registrar

PLOTTED
JR.



I, DONALD A. DUFFY, a British Columbia Land Surveyor, of Prince George, in British Columbia, certify that I was present at and did personally superintend the survey represented by this plan, and that the survey and plan are correct. The survey was completed on the 14th day of March, 1983.

Approved under the Land Title Act this 18 day of AUG., 1983

C. E. Olot
Approving Officer, City of Prince George

This plan lies within the Fraser-Fort George Regional District.

W.D. USHER & ASSOCIATES
LAND SURVEYORS
PRINCE GEORGE — B.C.
OW 54 13713

H.O. 5265C