

EXPLANATORY PLAN OF
PARKING & ACCESS AGREEMENT WITHIN REMAINDER OF
PARCEL, PLAN 1329 (H 7379)
DISTRICT LOT 4377
CARIBOO DISTRICT—BRITISH COLUMBIA

SCALE: 1 : 1000



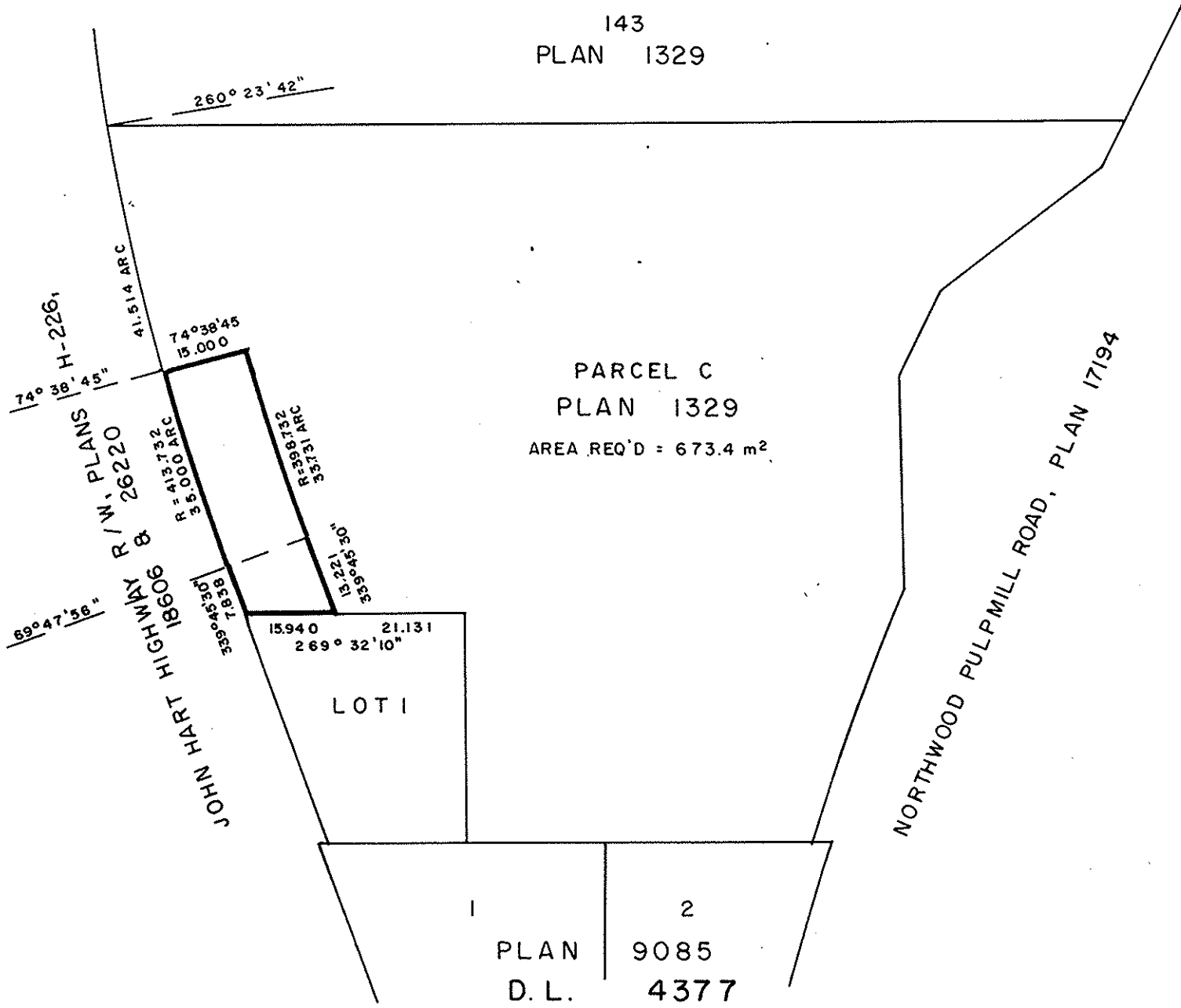
NOTE: Bearings are astronomic, derived from the north boundary of Lot 1, Plan

PLAN No 29442

Deposited in the Land Title Office at Prince George, B.C. this 16. day of August, 1983.

E.J. RAVEN Registrar

501256
HP



CERTIFIED CORRECT
According to measurements shown
on Plan
This 29 day of November, 1982.

[Signature]
D.A. DUFFY, B.C.L.S.

This plan lies within the Fraser-Fort George Regional District.

W.D. USHER & ASSOCIATES
LAND SURVEYORS
PRINCE GEORGE — B.C.

13 285 C