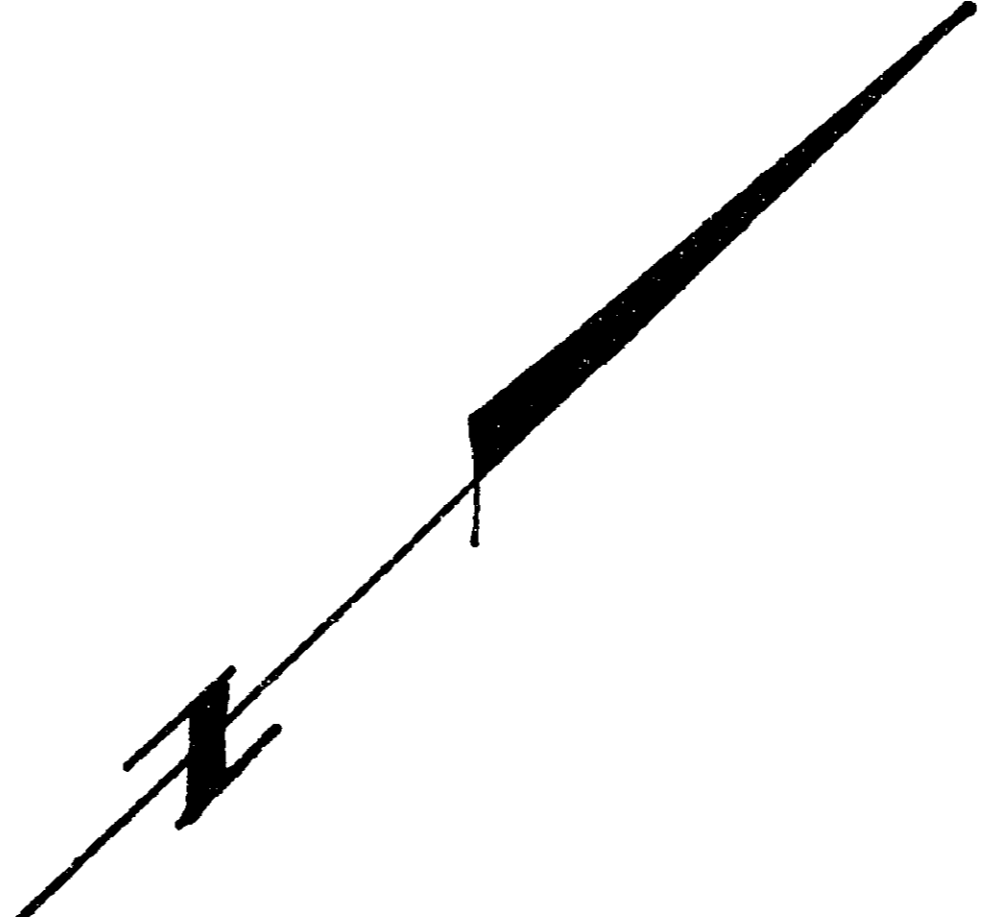
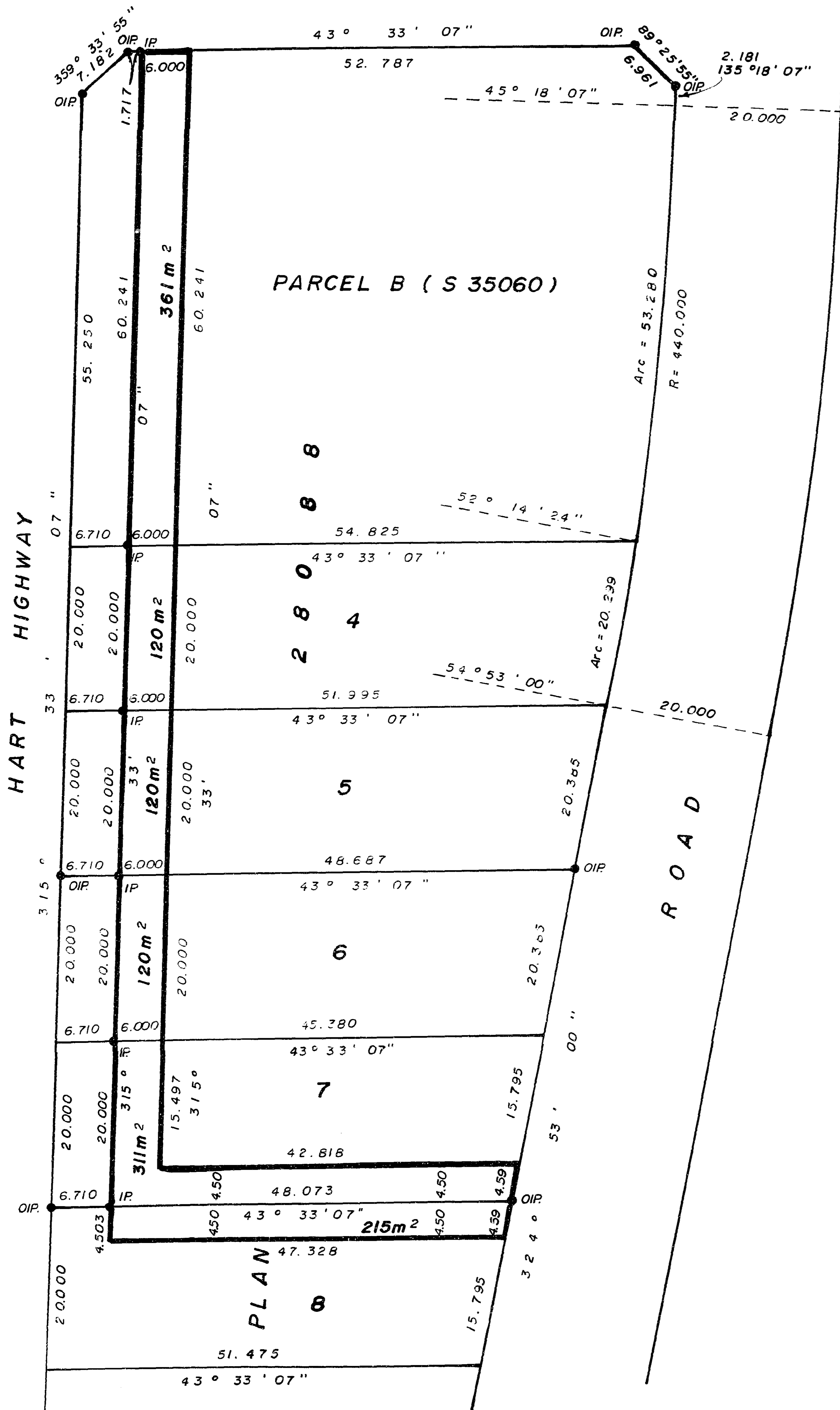


26-FF-226

MONTEREY ROAD

PLAN NO. 29415
 DEPOSITED IN THE LAND TITLE OFFICE AT
 PRINCE GEORGE THIS 2nd DAY OF Aug 1983.

E. J. Raven
 REGISTRAR



REFERENCE PLAN OF EASEMENT
 IN PARCEL B (S 35060) and LOTS 4,
 5, 6, 7, and 8, PLAN 28088, D.L. 4039
 CARIBOO DISTRICT.

SCALE : 1: 500 (ALL DISTANCES ARE IN METRES)



LEGEND

BEARINGS ARE ASTRONOMIC DERIVED FROM
 PLAN 28088.
 ● I.P. STANDARD IRON POST
 ○ DENOTES " OLD "

I, V. BARTELL, A BRITISH COLUMBIA LAND SURVEYOR
 OF PRINCE GEORGE IN BRITISH COLUMBIA CERTIFY
 THAT I WAS PRESENT AT AND PERSONALLY
 SUPERINTENDED THE SURVEY REPRESENTED BY THIS
 PLAN AND THAT THE SURVEY AND PLAN ARE
 CORRECT. THE SURVEY WAS COMPLETED ON THE
 20th DAY OF JULY, 1983.

V. Bartell
 V. BARTELL B.C.L.S.

BOOK OF REFERENCE	
DESCRIPTION	AREA
PARCEL B (S 35060)	361 m ²
LOT 4 PLAN 28088	120 m ²
LOT 5 PLAN 28088	120 m ²
LOT 6 PLAN 28088	120 m ²
LOT 7 PLAN 28088	311 m ²
LOT 8 PLAN 28088	215 m ²

THIS PLAN LIES WITHIN THE FRASER FORT
 GEORGE REGIONAL DISTRICT.

McWILLIAM, WHYTE, GOBLE, & ASSOCIATES,
 B.C. LAND SURVEYORS,
 PRINCE GEORGE - KAMLOOPS - SMITHERS - SALMON ARM
 REF NO. 83078