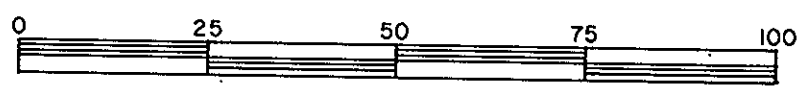


REFERENCE PLAN OF EASEMENT THROUGH
LOT 12, PLAN 13852
DISTRICT LOT 1593
CARIBOO DISTRICT - BRITISH COLUMBIA

SCALE: 1 : 1000



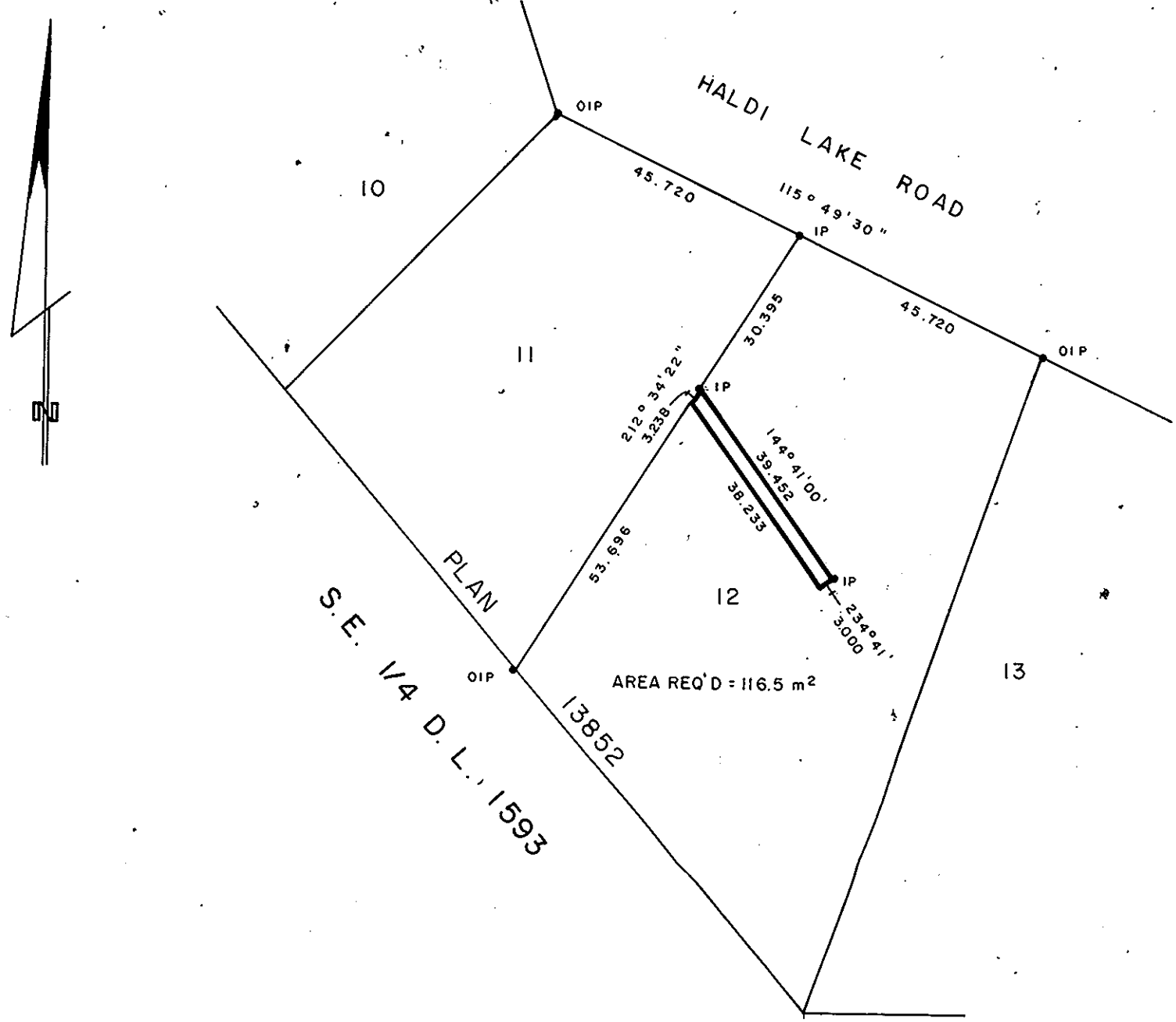
NOTE: Bearings are astronomic, derived from the
northeasterly boundaries of Lots 11 & 12,
Plan 13852.

LEGEND: • OIP denotes an old iron pin found.
• IP denotes an iron pin set.

PLAN N^o 29411

Deposited in the Land Title
Office at Prince George, B.C. this
28th day of July, 1983

Registrar EJR



I, DONALD A. DUFFY, a British Columbia Land
Surveyor, of Prince George, in British Columbia,
certify that I was present at and did personally
superintend the survey represented by this plan,
and that the survey and plan are correct. The
survey was completed on the 29 day of MARCH,
1983.

This plan lies within the Fraser- Fort George
Regional District.

W. D. USHER & ASSOCIATES
LAND SURVEYORS
PRINCE GEORGE - B.C.
00 85 13740